



The 2011 Census found that Oxfordshire's population grew by 8% (48,500 people) between 2001 and 2011. The latest data release shows that population growth wasn't evenly spread around the County:

- Ten wards increased at more than twice the county average (table 1)
- The largest increase in population at ward-level was in Carterton North East, which more than doubled, from 3,140 in 2001 to 6,134 in 2011

Table 1: Ten wards with highest overall population growth

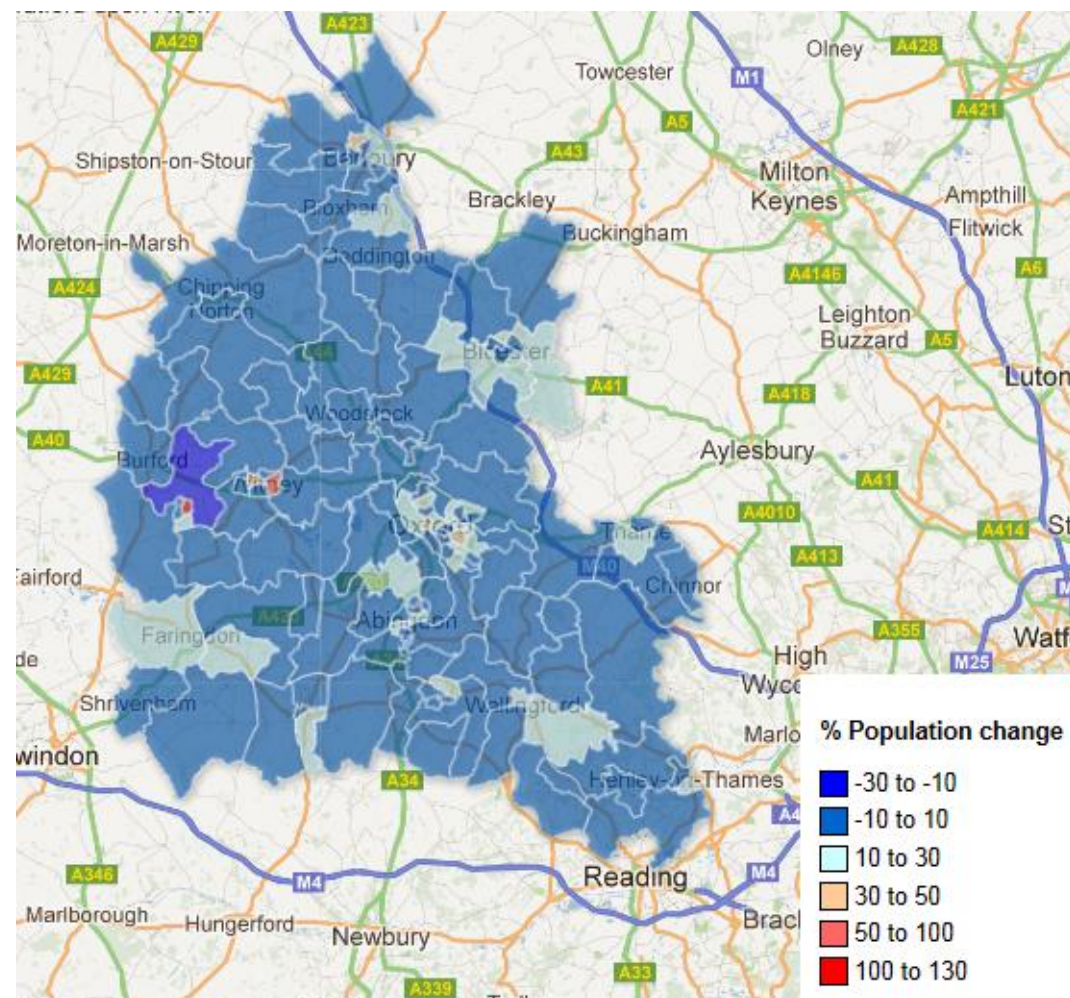
	total % population change
Carterton North East	104.9%
Witney East	75.4%
Cowley Marsh	42.8%
Banbury Hardwick	41.4%
Carfax	39.2%
Witney Central	35.7%
Headington Hill and Northway	27.4%
Holywell	25.8%
Bicester North	24.1%
Carterton South	24.0%

Source: ONS 2011 Census data, table PP04

Census 'estimates' not 'counts'?

A census aims to count every person in the population. However, for a variety of reasons, some people will never get counted. Statistical techniques can estimate how many people were not counted, and so it is these census estimates, rather than the 'raw' census counts, that gives us the best indication of how large the really population is. (For further information, please see the ONS publication "[Trout, Catfish and Roach](#)".)

Figure 1: Population growth by ward (%), 2001 to 2011



Source: ONS 2011 Census data, table PP04

Population change by age

The number of older people has increased at more than twice the overall population growth rate (18%). In contrast, the number of 0-14 year olds has increased by just 3%. These changes vary across the County:

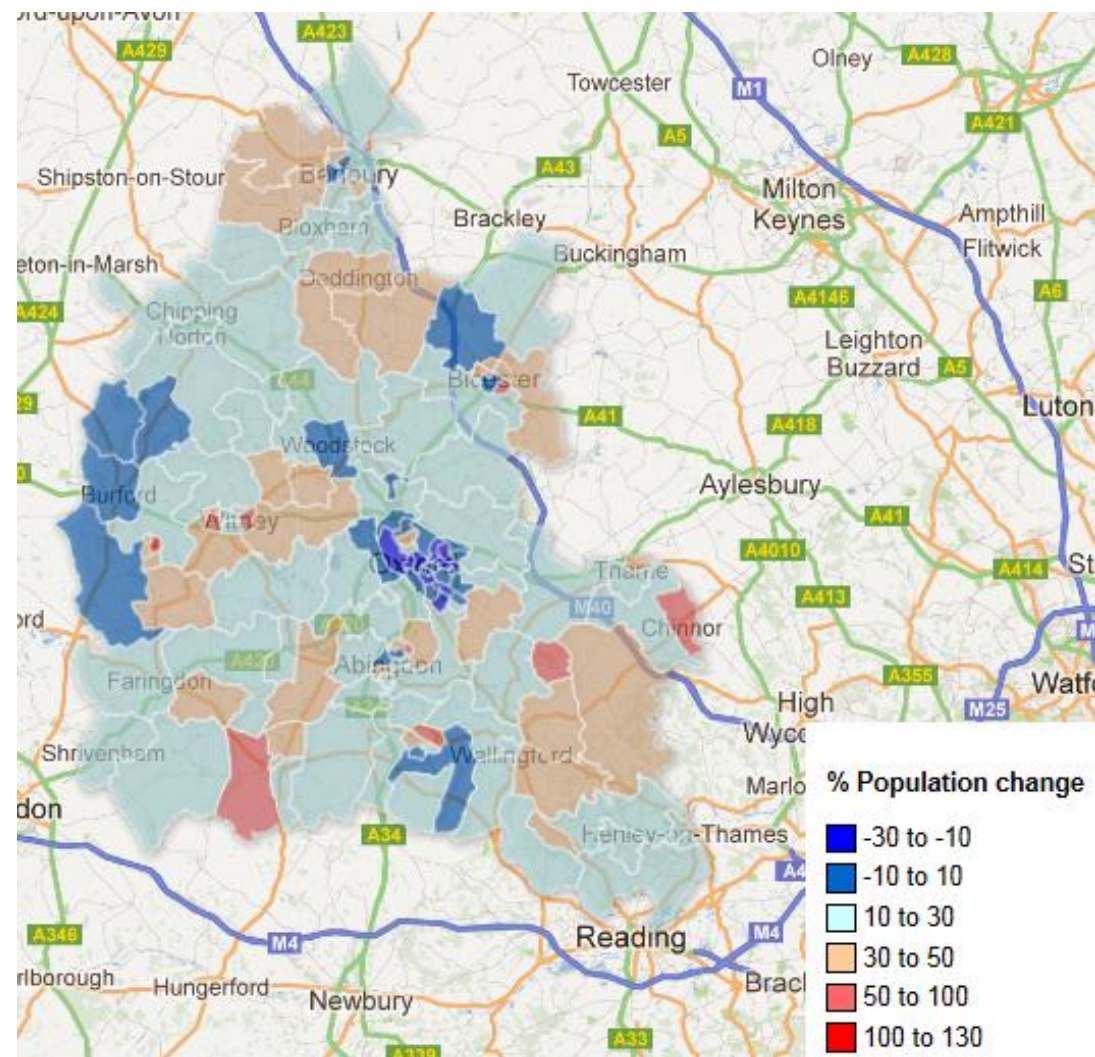
- the number of young people aged 0-14 years in urban areas has increased by over 40%, but has declined in rural areas (by 21% in the town and fringe areas and by 35% in the most rural areas)
- In contrast, the number of people aged 65 years and over has increased in by 25% in rural areas – but unlike the younger age groups, the numbers of over 65s has increased in all areas of the County.

Table 2 Urban, rural population change by age, 2001 to 2011

	2001 to 2011 change		
	all people	0-14 years	65 years and over
Village, Hamlet & Isolated Dwellings	3255 2.7%	-12014 -35.7%	4830 25.6%
Town and Fringe	4747 4.0%	-5735 -21.1%	4902 24.6%
Urban > 10k	40320 11.0%	21096 42.0%	6115 12.5%
All areas	48322 8.0%	3347 3.0%	15847 18.0%

Source: ONS 2011 Census data, table PP04

Figure 2: Change in number of people over 65 (%), 2001 to 2011



Source: ONS 2011 Census data, table PP04

Ten wards with highest overall population growth

	total % population change
Banbury Hardwick	41.4%
Bicester North	24.1%
Carfax	39.2%
Carterton North East	104.9%
Carterton South	24.0%
Cowley Marsh	42.8%
Headington Hill and Northway	27.4%
Holywell	25.8%
Witney Central	35.7%
Witney East	75.4%

Ten wards with lowest overall population growth

	total % population change
Abingdon Peachcroft	-3.9%
Bicester East	-5.5%
Brize Norton and Shilton	-28.7%
Carterton North West	-4.0%
Charlbury and Finstock	-4.0%
Forest Hill and Holton	-5.4%
Shrivenham	-8.8%
Wantage Segsbury	-4.4%
Witney North	-4.5%
Woodcote	-4.0%

Ten wards with greatest % increase, 0-14 year olds

	0-14 year old % change
Banbury Hardwick	40.0%
Barton and Sandhills	38.6%
Carterton North East	65.0%
Cowley Marsh	73.2%
Henley North	34.8%
Holywell	40.0%
Lye Valley	36.9%
St Margaret's	68.8%
Witney Central	36.4%
Witney East	79.7%

Ten wards with least % growth, 0-14 year olds

	0-14 year old % change
Abingdon Peachcroft	-25.7%
Bicester East	-22.5%
Carterton North West	-28.7%
Chalgrove	-22.5%
Charlbury and Finstock	-24.6%
Grove	-20.6%
St Clement's	-23.2%
Thame North	-21.3%
Witney North	-21.0%
Witney West	-22.4%

Ten wards with greatest % increase, 65 years and over

	65+ % change
Abingdon Peachcroft	95.9%
Banbury Calthorpe	47.9%
Bicester South	87.7%
Carterton North East	109.9%
Chalgrove	67.5%
Chinnor	61.1%
Didcot Ladygrove	71.8%
Greendown	54.7%
Witney East	65.5%
Witney West	51.4%

Ten wards with least % increase, 65 years and over

	65+ % change
Carfax	-18.4%
Churchill	-10.4%
Cowley	-10.2%
Headington	-13.7%
Headington Hill and Northway	-18.4%
Holywell	-29.9%
Iffley Fields	-13.0%
Jericho and Osney	-10.9%
Littlemore	-17.0%
St Clement's	-8.1%

Source: ONS 2011 Census data, table PP04