



# **Wantage and Grove**

## **Settlement profile of Health and Wellbeing evidence**

**Updated November 2020**

## CONTENTS

1	Summary.....	3
2	Geographical area.....	5
3	Population profile .....	9
3.1	Population by age.....	9
3.2	Ethnicity .....	10
3.3	People living in Communal Establishments .....	11
4	Deprivation and Children in poverty .....	12
4.1	Indices of Deprivation 2019 .....	12
4.2	Child poverty.....	14
5	Health and wellbeing.....	15
5.1	Health profiles for Wantage and Grove wards .....	15
5.2	Provision of care.....	18
5.3	Health conditions .....	19
5.4	Physical activity and healthy weight .....	21
5.4.1	Physical activity.....	21
5.4.2	Child obesity .....	22
6	Other - house prices and commuting data .....	24
	ANNEX 1: Data sources for indicators used in ward health profiles .....	26
	ANNEX 2: Data sources used in this report.....	28

This report provides health and wellbeing evidence from the Oxfordshire Joint Strategic Needs Assessment (JSNA) for Wantage and Grove.

Reports and related information for the full Oxfordshire Joint Strategic Needs Assessment is available on the Oxfordshire Insight website at <http://insight.oxfordshire.gov.uk/cms/joint-strategic-needs-assessment>

# 1 Summary

## Population

- According to the ONS mid-year ward population estimates, the population of Wantage and Grove increased from **17,866** in mid-2009 to **19,834** in mid-2019. This growth - over a ten year period – was an apparent increase of 1,968 people or **+11%**.
- Comparing Wantage and Grove's age profile in 2019 with district, county, regional, and national profiles shows that Wantage and Grove have a similar proportion of the lower age group (0-15), and a slightly higher proportion of those aged 65 and over.
- At the time of the Census 2011 survey, Wantage and Grove had a relatively low proportion of ethnic minority residents (6% compared with 10% in Vale of White Horse, 16% in Oxfordshire and 20% in England).

## Deprivation and children in poverty

- According to the English Indices of Multiple Deprivation 2019, Wantage and Grove remains a relatively undeprived area. All LSOA's within the area rank within the 50% least deprived based on the overall IMD score.
- According to End Child Poverty estimates for 2017/18, the Grove (pre-2015) ward had a quarter of children living in poverty (after housing costs), placing it higher than the overall proportion for the Vale of White House (22%). Wantage Charlton and Segsbury both had relatively low incidences of children living in poverty.

## Health and wellbeing

- Health indicators for the Wantage and Grove wards are similar to or statistically better than England averages.
- The prevalence of **diabetes** recorded by both GP practices in Wantage and Grove in 2019-20 was significantly below the national rate.
- The prevalence of **dementia** recorded in 2019-20 for both practices was significantly above the national rate, however. This could be associated with Wantage and Grove's relatively older age profile, which has a higher proportion of people aged 65 and over compared to England as a whole.
- The prevalence of **depression** recorded by the Newbury Street Practice was significantly lower than the national and Oxfordshire rates.
- According to Sport England's small area estimates, the proportion of people aged 16+ in Wantage and Grove who were physically active at least 150 minutes a week was similar to (just slightly below) the district and county rates, and above the national rate.

- The latest data on child obesity from the National Child Measurement Programme (NCMP, 3 years combined 2016/17 to 2018/19) shows that for both reception children (aged 4-5 years), and year 6 children (aged 10-11 years), the proportion who are obese in Wantage and Grove is similar to that for the district and county.

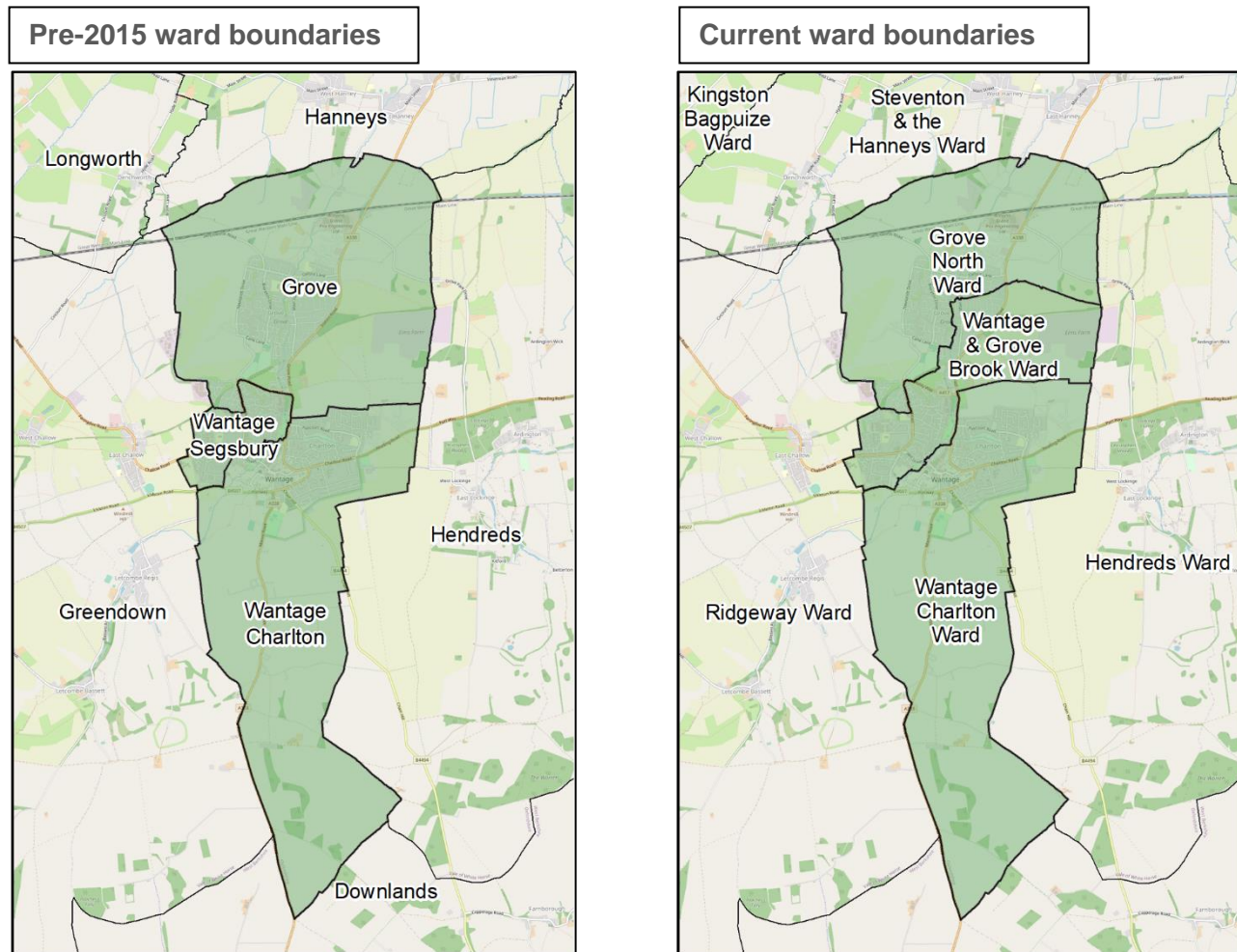
### House prices and commuting

- Over the past 5 years (year ending December 2014 to year ending December 2019), median prices for semi-detached housing in Wantage and Grove generally increased in line with the Vale of White Horse district rate. Grove North typically has the lowest house prices and has experienced the slowest growth between December 2014 and December 2019.
- According to the 2011 Census travel to work statistics, there was just under 9,000 people living in Wantage and Grove (MSOA 011 and 014) in employment the week before the Census. Of these, around a third (36%, 3,200) were living and working in Wantage and Grove and 64% worked outside the area. This includes people working mainly at or from home in Wantage and Grove (817) and employed residents with no fixed place of work (640).

## 2 Geographical area

Data in this profile is reported using several types of geographical boundaries – administrative and statistical.

Following ward boundary changes in 2015, Wantage and Grove are subdivided into the 3 administrative district wards of Grove North, Wantage & Grove Brook, and Wantage Charlton.



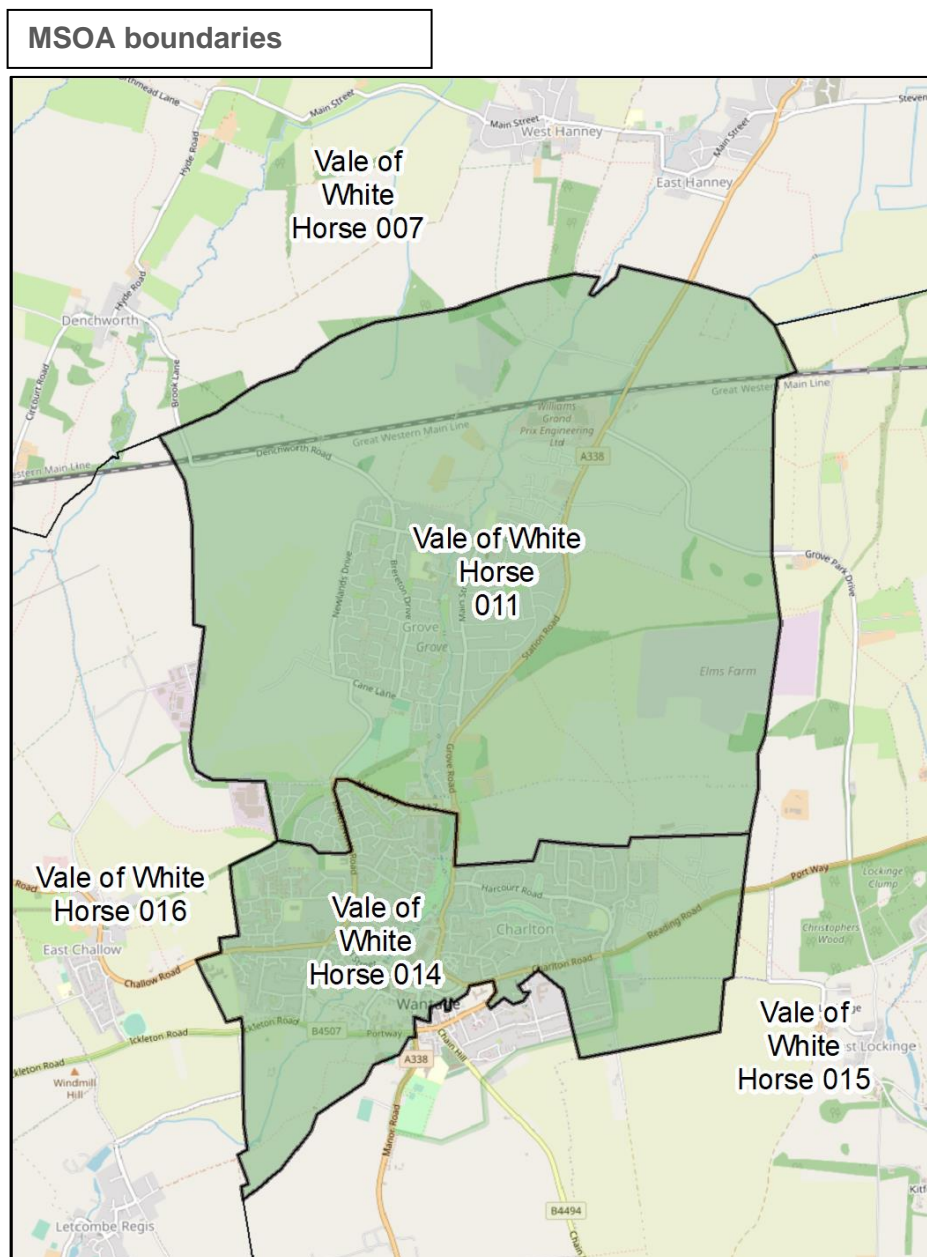
Maps by Oxfordshire County Council

In addition to these administrative boundaries, National Statistics for small areas are reported using the statistical hierarchy developed by the Office for National Statistics.

**Middle Super Output Areas (MSOAs)** are used by ONS to publish Census travel to work data and an increasing range of other social and demographic statistics.

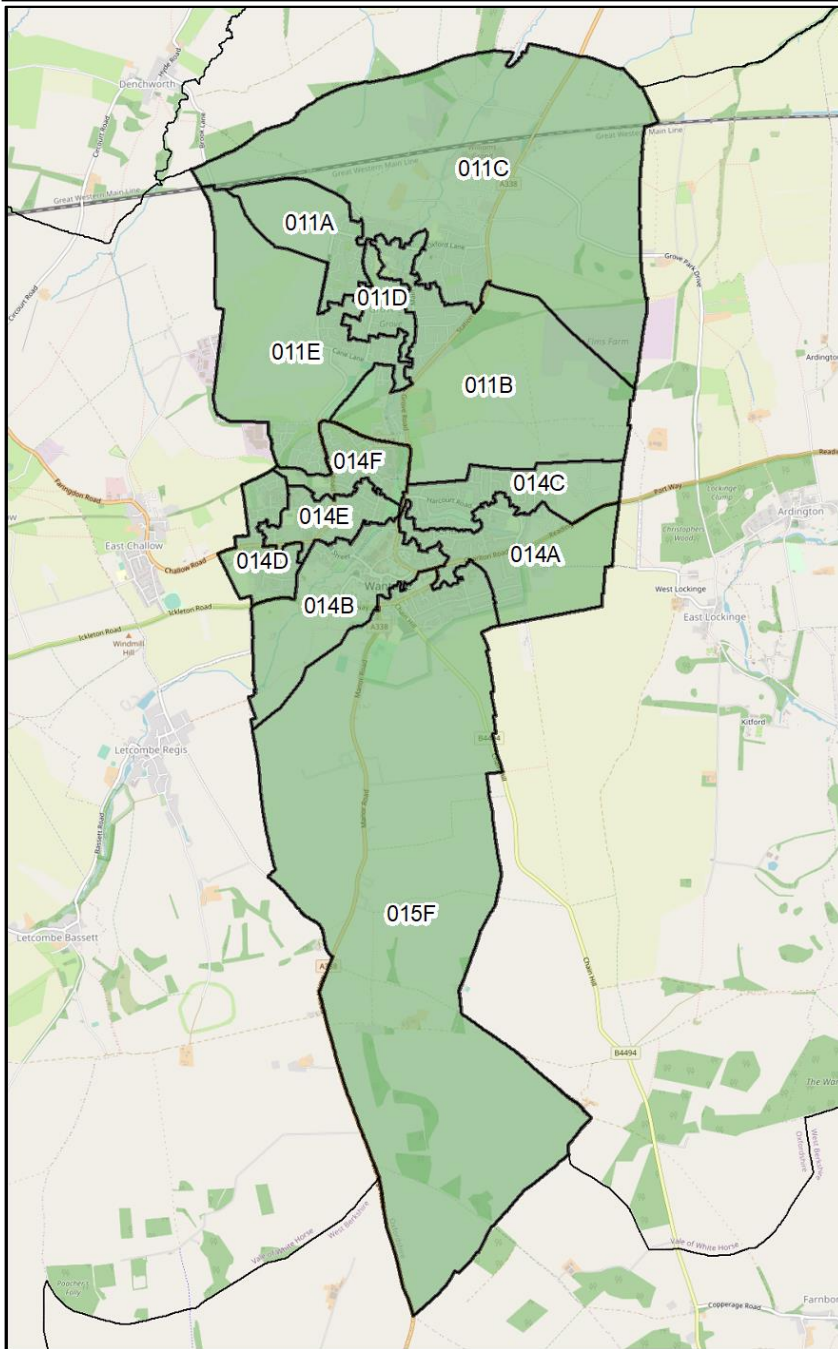
There are two complete MSOAs covering Wantage and Grove: Vale of White Horse 011 and 014.

**Lower Super Output Areas (LSOAs)** are used as the geography for publishing the national Indices of Deprivation (IMD). In Wantage and Grove, there is a total of 12 LSOAs.



Maps by Oxfordshire County Council



**LSOA boundaries (each code is prefixed by 'Vale of White Horse')**

Maps by Oxfordshire County Council

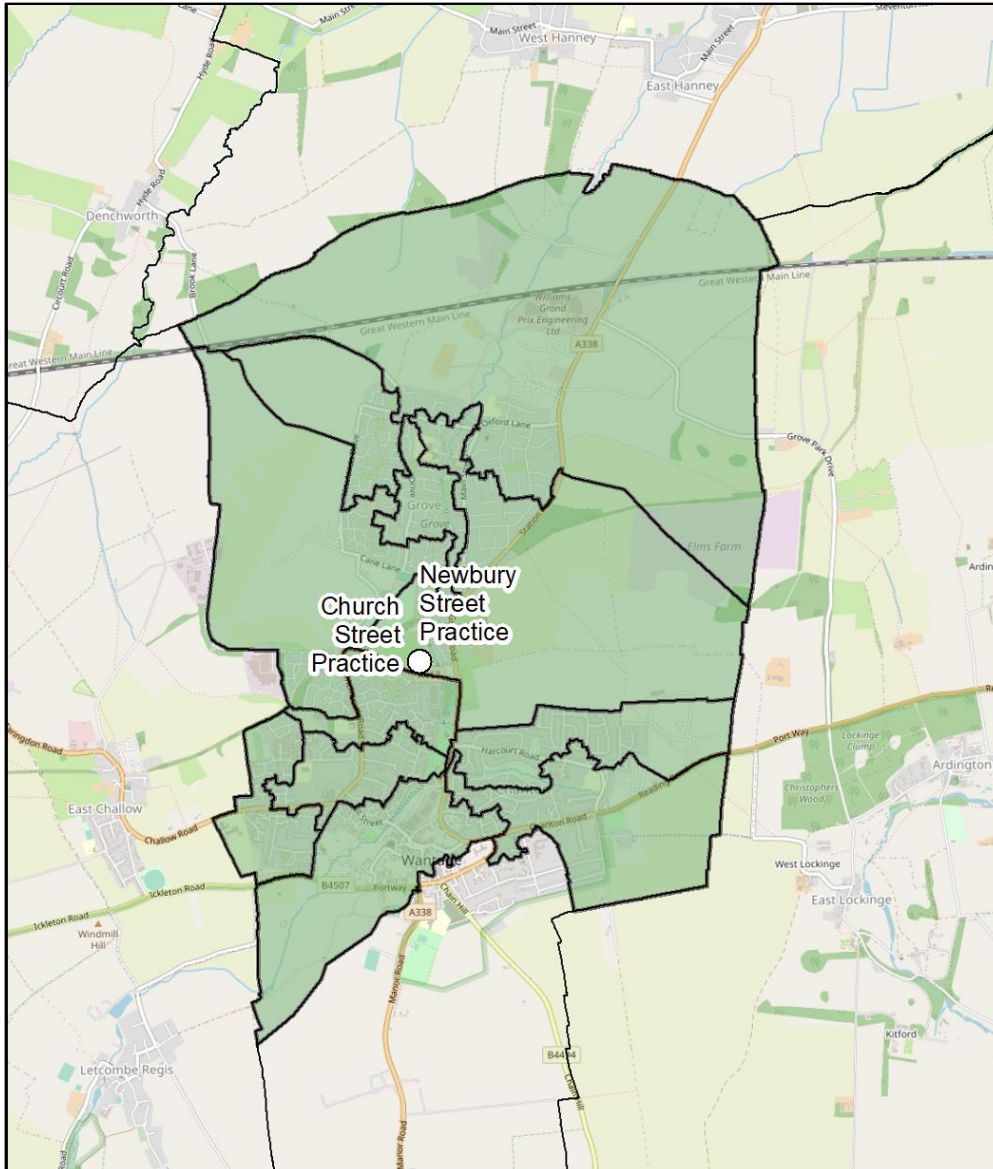
Each LSOA is made up of smaller Output Areas. The main datasets available at Output Area level are the Census 2011 and Census 2001 surveys.

## GP data

Data on prevalence of health conditions has been extracted from the Quality Outcomes Framework (to the end of March 2020) for the following two GP practices in Wantage and Grove:

- Newbury Street Practice
- Church Street Practice

### GP practice locations



Maps by Oxfordshire County Council

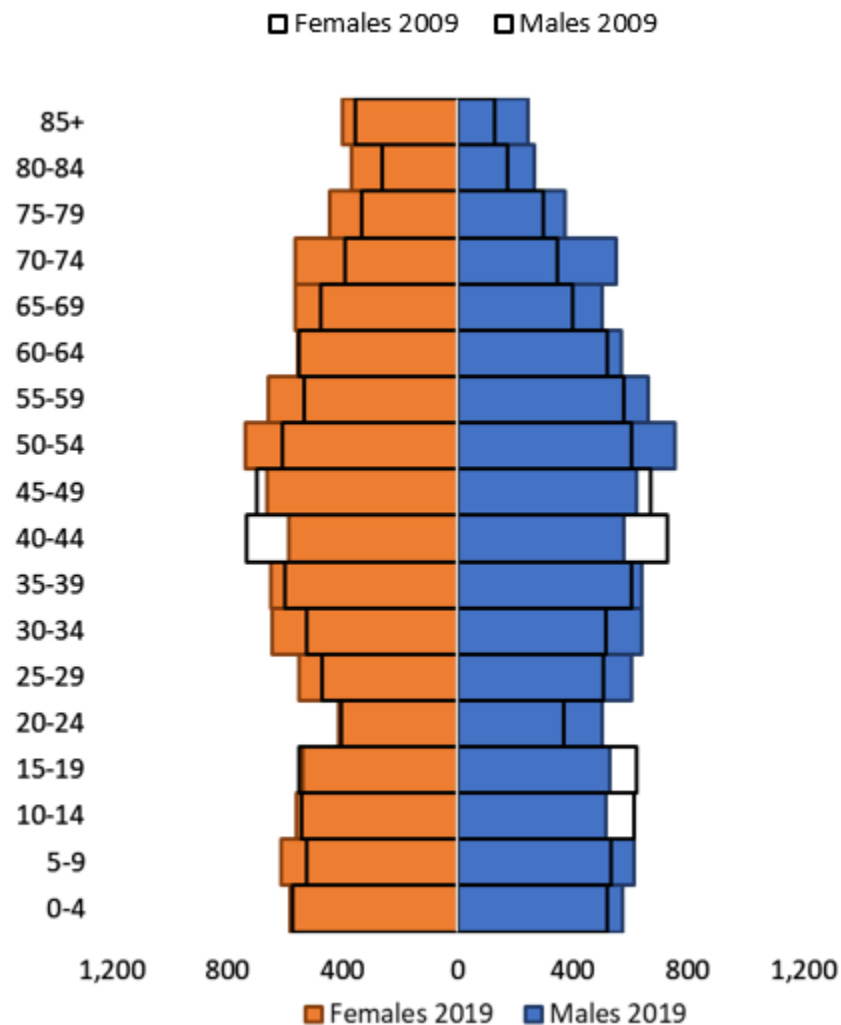


### 3 Population profile

#### 3.1 Population by age

According to the ONS mid-year ward population estimates, the population of Wantage and Grove increased from **17,866** in mid-2009 to **19,834** in mid-2019. This growth - over a ten year period – was an apparent increase of 1,968 people or +11%.

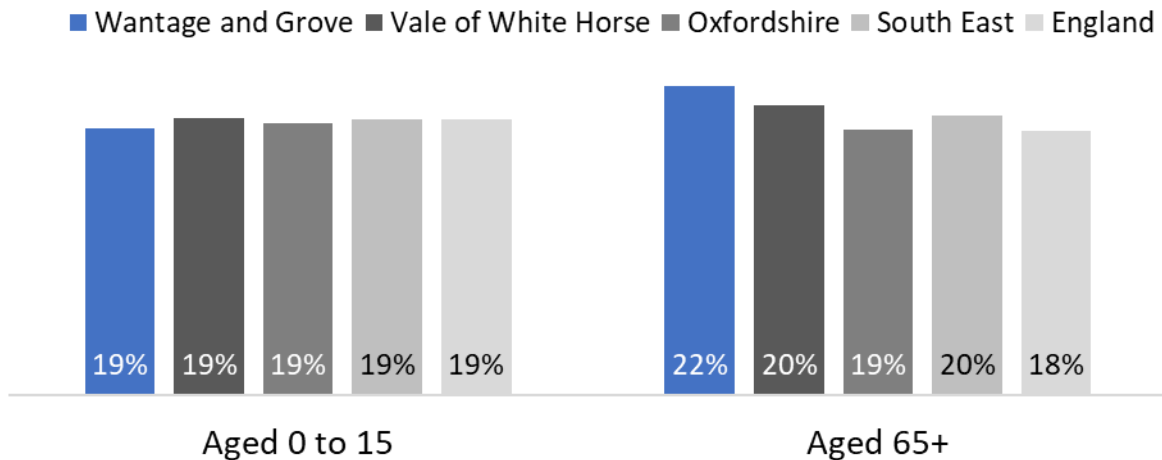
Figure 1 Population of Wantage and Grove by 5 year age band, 2009 and 2019



Source: ONS ward level mid-year population estimates for 2019 from [nomis](#), mid-year population estimates for 2009 from the [ONS](#).

Comparing Wantage and Grove's age profile in 2019 with district, county, regional, and national profiles shows that Wantage and Grove have a similar proportion of the lower age group (0-15), and a slightly higher proportion of those aged 65 and over.

**Figure 2 Proportion of residents aged 0-15 and 65+ (2019)**



Source: ONS mid-year population estimates for 2019

### 3.2 Ethnicity

*The most recent data on ethnicity is still the 2011 Census.*

At the time of the Census 2011 survey, Wantage and Grove had a relatively low proportion of ethnic minority residents<sup>1</sup> (6% compared with 10% in Vale of White Horse, 16% in Oxfordshire and 20% in England).

The largest ethnic minority background was “Other White” with 737 residents, followed by Asian/Asian British with 299 residents.

Census 2011 data on country of birth shows that the largest groups of non-UK born residents were from:

- Germany (196)
- South Africa (135)
- India (102)
- United States (95)

<sup>1</sup> Census 2011: Tables KS201 and QS203, data for MSOAs 011, 014, and 015 covering Wantage and Grove

### 3.3 People living in Communal Establishments

*The most recent data on people living in communal establishments (such as care homes, boarding schools, halls of residence) is still the 2011 Census.*

At the time of the Census 2011 survey, there were 221 people living in Wantage and Grove counted as living in a communal establishment out of a total of 18,500 residents (1.2%).

Of the total of 221 people living in Wantage and Grove living in a communal establishment in 2011:

- 196 were in care homes with and without nursing;
- 23 were in a religious establishment (located in Wantage Segsbury)

**Table 1 People living in Communal Establishments: Wantage and Grove (2011)**

Area	All people in communal establishments	Care home with nursing	Care home without nursing	Other establishment: Religious
Vale of White Horse	2,944	301	365	23
Wantage and Grove total	221	64	132	23
Wantage and Grove as % of Vale of White Horse	8%	21%	36%	100%
Grove	0	0	0	0
Wantage Charlton	172	64	106	0
Wantage Segsbury	49	0	26	23

Source: ONS Census 2011 table QS421

Note: not all communal establishment types displayed by columns

## 4 Deprivation and Children in poverty

### 4.1 Indices of Deprivation 2019

#### Indices of Deprivation 2019

The 2019 Indices of Deprivation (IMD2019) combines measures across 7 “domains” and includes supplementary indices of deprivation affecting children and older people.

According to this latest IMD, Wantage and Grove remains a relatively undeprived area. All LSOA’s within the area rank within the 50% least deprived based on the overall IMD score.

**Figure 3 IMD deciles for areas in Wantage and Grove (1 is most deprived decile) sorted on the overall IMD**

LSOA area name	IMD	Income	Employment	Education Skills and Training	Health	Crime	Barriers to Housing and Services	Living Environment	Income Dep Affecting Children Index	Income Dep Affecting Older People
Wantage Charlton 15F	6	5	5	5	7	5	8	8	6	6
Grove North 11E	7	6	7	3	9	9	3	8	5	6
Wantage & Grove Brook 14D	8	7	7	5	9	10	5	9	6	8
Grove North 11C	9	7	6	6	10	10	9	10	4	9
Grove North 11D	9	10	9	6	9	6	4	10	8	10
Wantage & Grove Brook 14E	9	7	8	6	9	6	8	9	6	9
Wantage Charlton 14B	9	7	9	8	9	4	8	8	7	8
Grove North 11A	10	10	10	7	10	10	4	10	8	10
Wantage & Grove Brook 11B	10	9	9	6	10	7	7	9	8	10
Wantage & Grove Brook 14F	10	9	7	8	10	10	5	10	9	9
Wantage Charlton 14A	10	9	8	7	9	8	9	8	10	8
Wantage Charlton 14C	10	10	9	8	10	10	10	9	9	10

Source: MHCLG English Indices of Deprivation 2019

*Numbers = deprivation decile (compared with all areas in England) where 1 = most deprived 10% nationally and 10= least deprived 10% nationally.*

**Figure 4 Wantage and Grove showing decile of overall index, decile of Education Skills and Training domain, decile of Income deprivation affecting children, and decile of Income deprivation affecting older people (2019)**



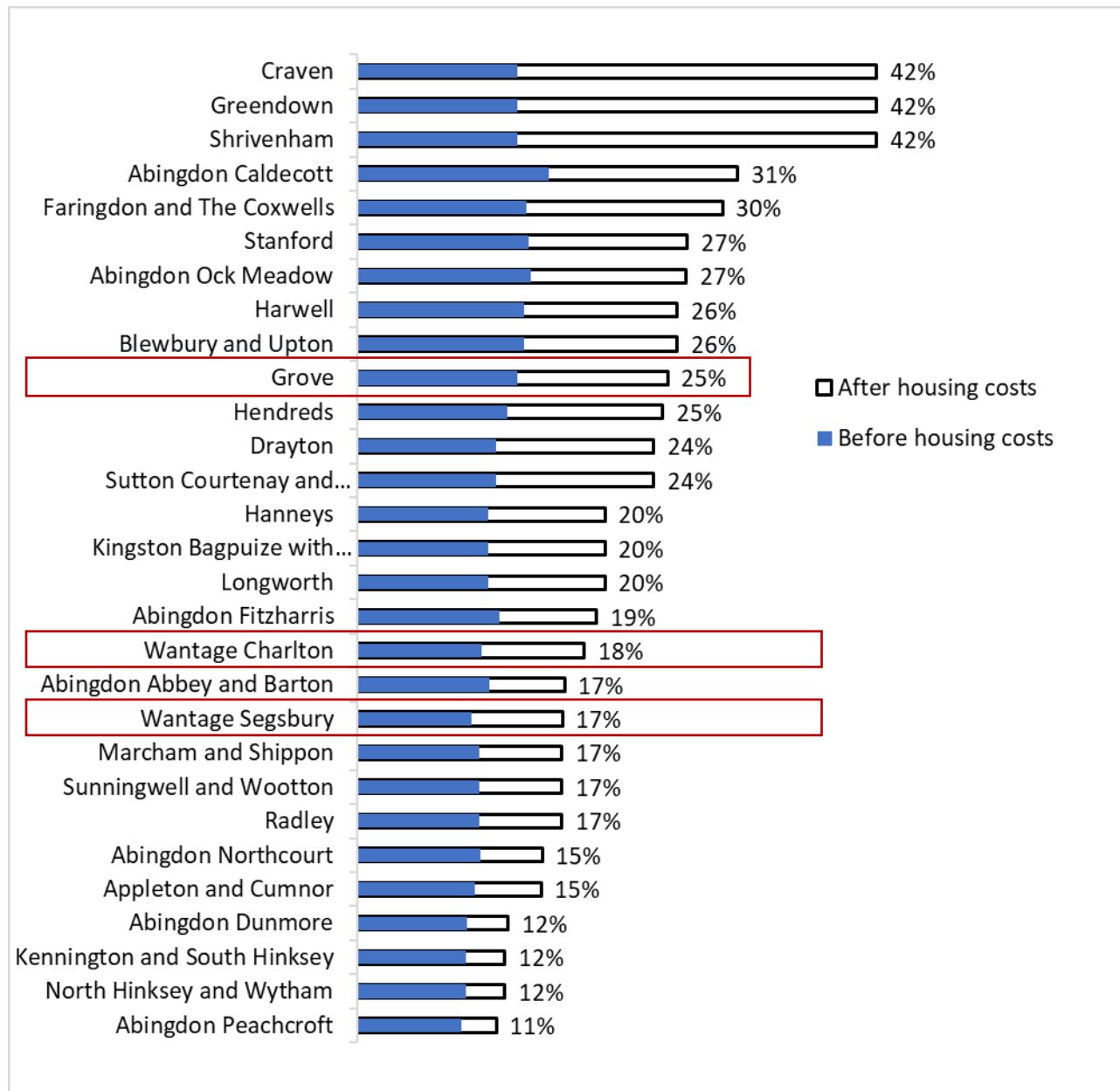
Source: MHCLG IMD 2019



## 4.2 Child poverty

According to End Child Poverty estimates for 2017/18, the Grove (pre-2015) ward had a quarter of children living in poverty (after housing costs), placing it higher than the overall proportion for the Vale of White Horse (22%). Wantage Charlton and Segsbury both had relatively low incidences of children living in poverty.

**Figure 5 Child poverty estimates in Vale of White Horse (pre-2015) wards (2017/18 estimates)**



Labelled with % child poverty *after* housing costs

Source: End Child Poverty estimates, <http://www.endchildpoverty.org.uk/poverty-in-your-area-2019/>

## 5 Health and wellbeing

### 5.1 Health profiles for Wantage and Grove wards

Public Health England publishes a range of health indicators to a local level at [www.localhealth.org.uk](http://www.localhealth.org.uk). All health indicators for the Wantage and Grove wards were similar to or statistically better than the England average.

**Figure 6 Health Profile for Grove North**

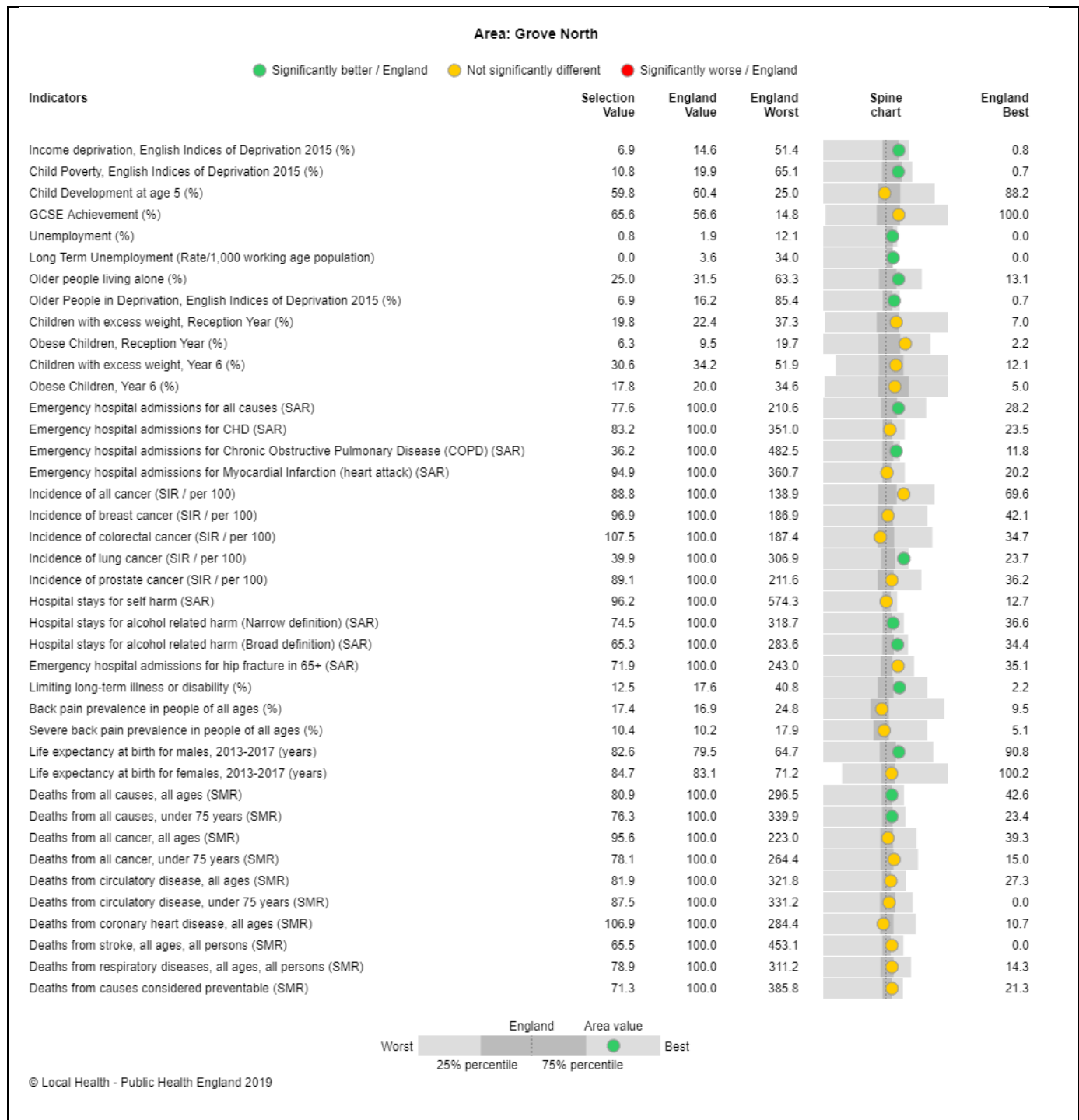


Figure 7 Health Profile for Wantage and Grove Brook

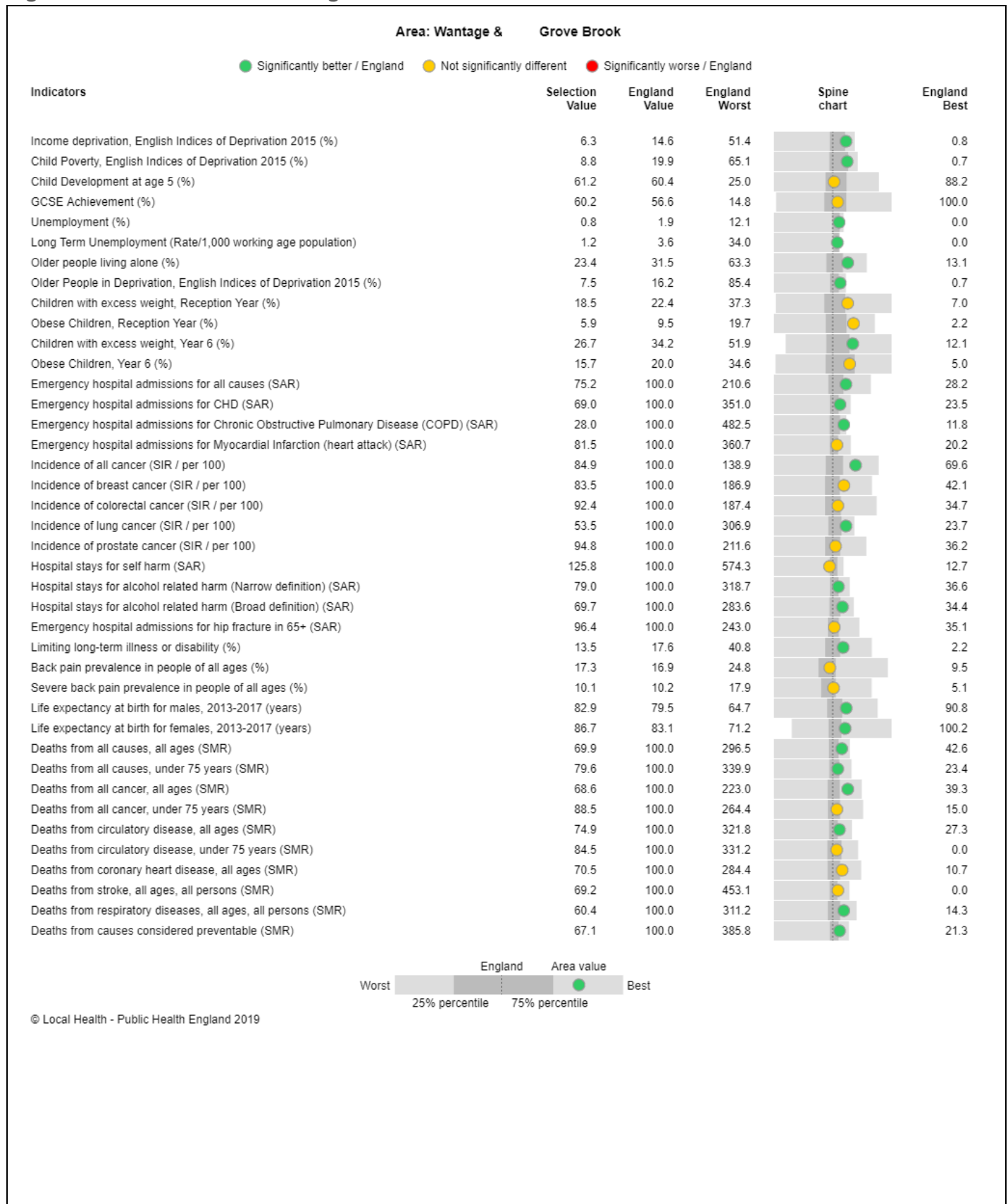
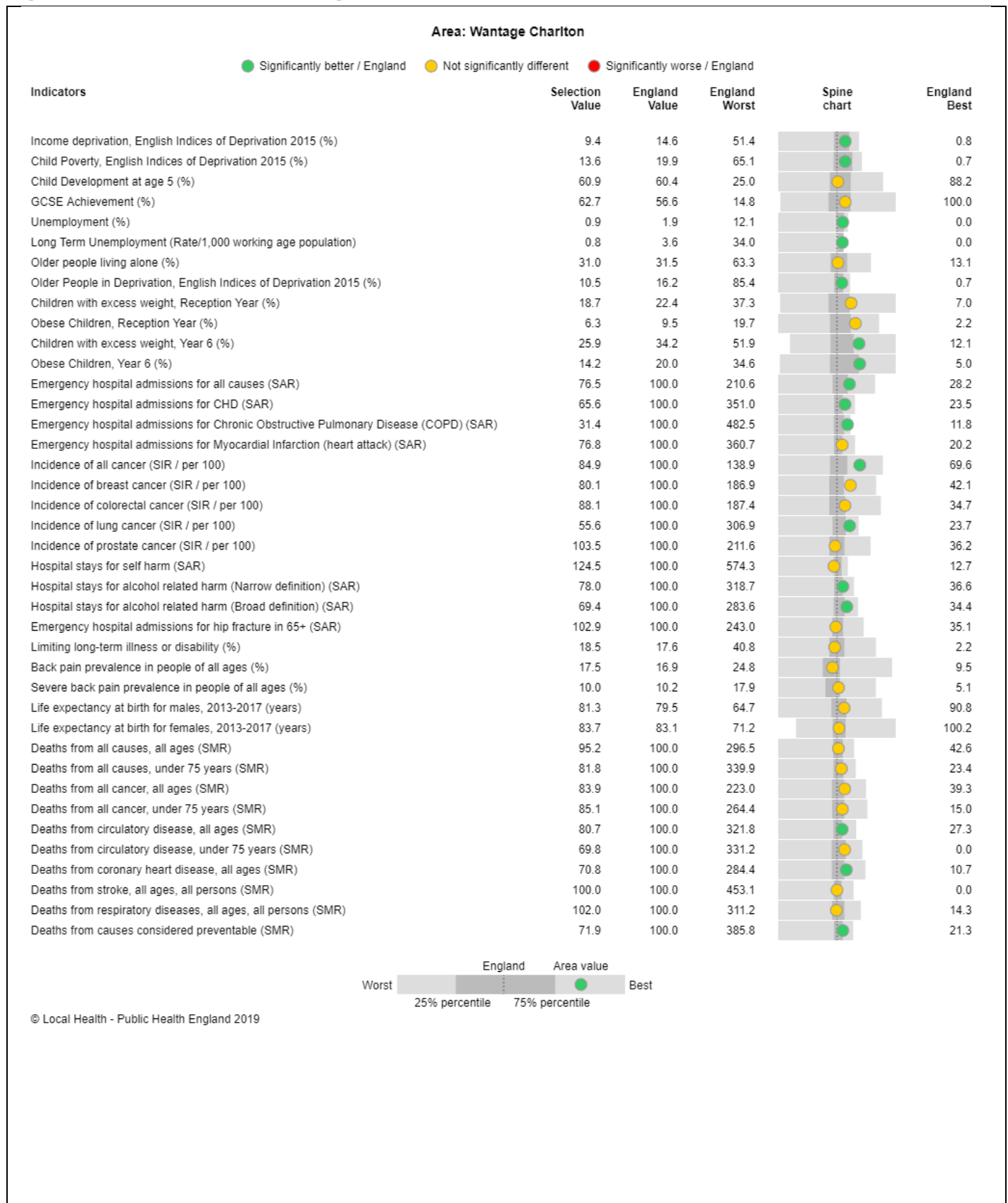


Figure 7 Health Profile for Wantage Charlton



## 5.2 Provision of care

### Care home beds

As of October 2020 there were 4 care homes with 189 care home beds in Wantage and Grove (all located in Wantage)<sup>2</sup>.

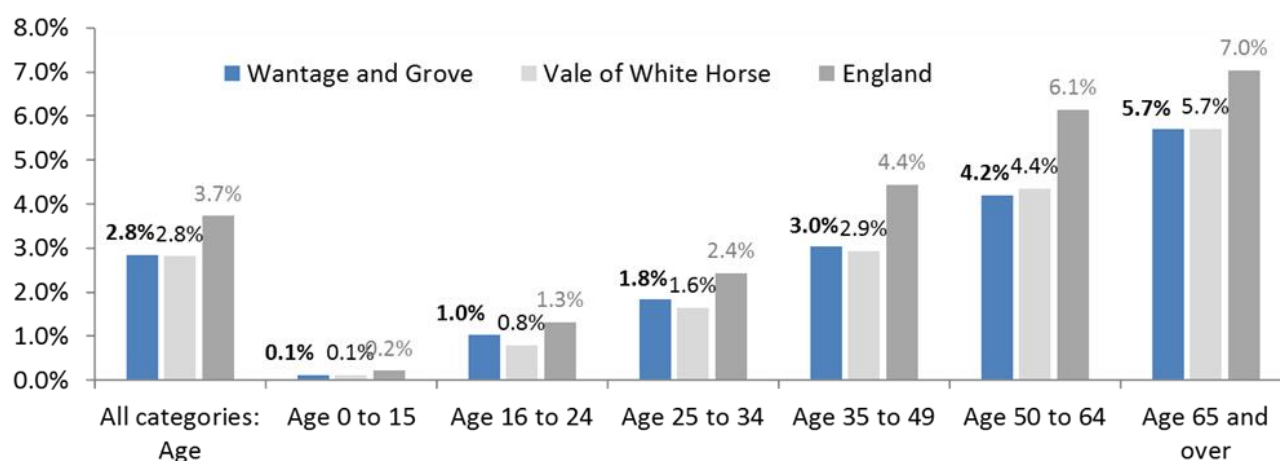
### People providing unpaid care

*The most recent data on people providing unpaid care is still the 2011 Census.*

At the time of the Census 2011 survey, there were **526** residents of Wantage and Grove providing a significant number of hours per week (20 or more) of unpaid care.

Overall the proportion of people providing 20 or more hours per week of unpaid care in Wantage and Grove in 2011 similar to the district average for Vale of White Horse and below national average, this was the case in all age groups.

**Figure 8 People providing 20 hours or more per week of unpaid care by age as % of resident population (2011)**



Source: ONS Census 2011 table LC3304

<sup>2</sup> Source: Care Quality Commission, 2020



## 5.3 Health conditions

### Diabetes

The prevalence of **diabetes mellitus** recorded by both GP practices in Wantage and Grove in 2019-20 was significantly below the national rate.

**Table 2 Change in prevalence (ages 17+) of Diabetes mellitus recorded by GP Practices in Wantage and Grove (Quality Outcomes Framework) 2018-19 to 2019-20**

	2018-19 Count	2018-19 Rate	2019-20 Count	2019-20 Rate	change
<i>England</i>	3,265,562	6.94	3,455,176	7.08	+0.14pp ↑
<i>Oxfordshire CCG</i>	30,868	5.05	31,982	5.05	<0.01pp
Church Street Practice	716	6.11	748	6.20 *	+0.09pp ↑
Newbury Street Practice	683	5.45	701	5.58 *	+0.13pp ↑

Source: NHS Digital, [Quality Outcomes Framework, 2019-20](#)

2019-20 rates with a red asterisk indicate a significantly higher rate for a GP practice compared to the national rate. Green asterisks indicate a significantly lower rate. Tested at a 95% confidence level.

### Mental health

The prevalence of **dementia** recorded by both GP practices in Wantage and Grove in 2019-20 was significantly above the national rate. This could be associated with Wantage and Grove's age profile (see section 3), which has a higher proportion of people aged 65 and over compared to England as a whole.

**Table 3 Change in prevalence of Dementia recorded by GP Practices in Wantage and Grove (Quality Outcomes Framework) 2018-19 to 2019-20**

	2018-19 Count	2018-19 Rate	2019-20 Count	2019-20 Rate	change
<i>England</i>	458,102	0.79	474,537	0.79	<0.01pp
<i>Oxfordshire CCG</i>	5,831	0.78	5,821	0.75	-0.03pp ↓
Church Street Practice	146	1.00	147	0.97 *	-0.02pp ↓
Newbury Street Practice	157	1.02	161	1.04 *	0.02pp ↑

Source: NHS Digital, [Quality Outcomes Framework, 2019-20](#)

2019-20 rates with a red asterisk indicate a significantly higher rate for a GP practice compared to the national rate. Green asterisks indicate a significantly lower rate. Tested at a 95% confidence level.

The prevalence of **depression** recorded by the Newbury Street Practice was significantly lower than the national and Oxfordshire rates. The prevalence recorded by the Church Street Practice was similar to the national rate.

**Table 4 Change in prevalence of Depression recorded by GP Practices in Wantage and Grove (Quality Outcomes Framework) 2018-19 to 2019-20**

	<b>2018-19 Count</b>	<b>2018-19 Rate</b>	<b>2019-20 Count</b>	<b>2019-20 Rate</b>	<b>change</b>
<i>England</i>	4,999,672	10.77	5,565,443	11.56	+0.79pp ↑
<i>Oxfordshire CCG</i>	66,656	11.06	73,648	11.81	+0.74pp ↑
Church Street Practice	1,234	10.66	1,377	11.57	+0.90pp ↑
Newbury Street Practice	1,171	9.46	1,262	10.18 *	+0.72pp ↑

Source: NHS Digital, [Quality Outcomes Framework, 2019-20](#)

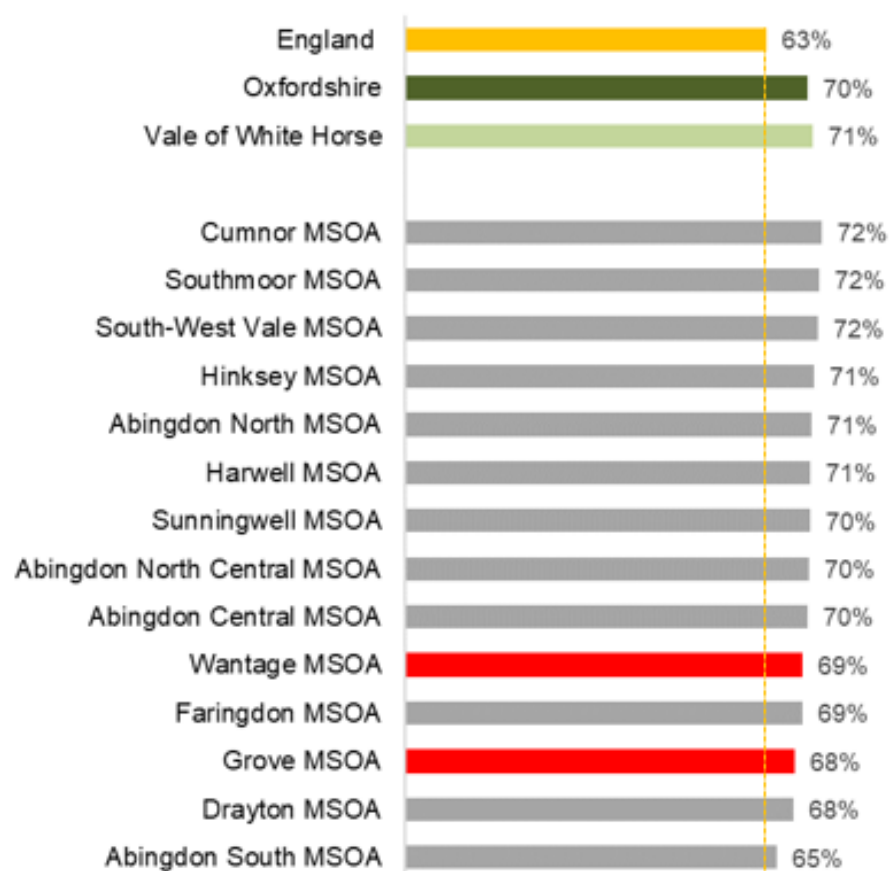
2019-20 rates with a red asterisk indicate a significantly higher rate for a GP practice compared to the national rate. Green asterisks indicate a significantly lower rate. Tested at a 95% confidence level.

## 5.4 Physical activity and healthy weight

### 5.4.1 Physical activity

According to Sport England's small area estimates<sup>3</sup>, the proportion of people aged 16+ in Wantage and Grove who were physically active at least 150 minutes a week was similar to (just slightly below) the district and county rates, and above the national rate.

**Figure 10** Estimated proportion of adults aged 16+ who are physically active at least 150 minutes a week (November 2018-19), Vale of the White Horse MSOAs



Source: [Sport England Active Lives survey](https://www.sportengland.org/know-your-audience/data/active-lives/active-lives-data-tables), November 2018-19; MSOA = Middle Layer Super Output Area covering an average of 7,600 residents; [map showing MSOAs in Oxfordshire](#)

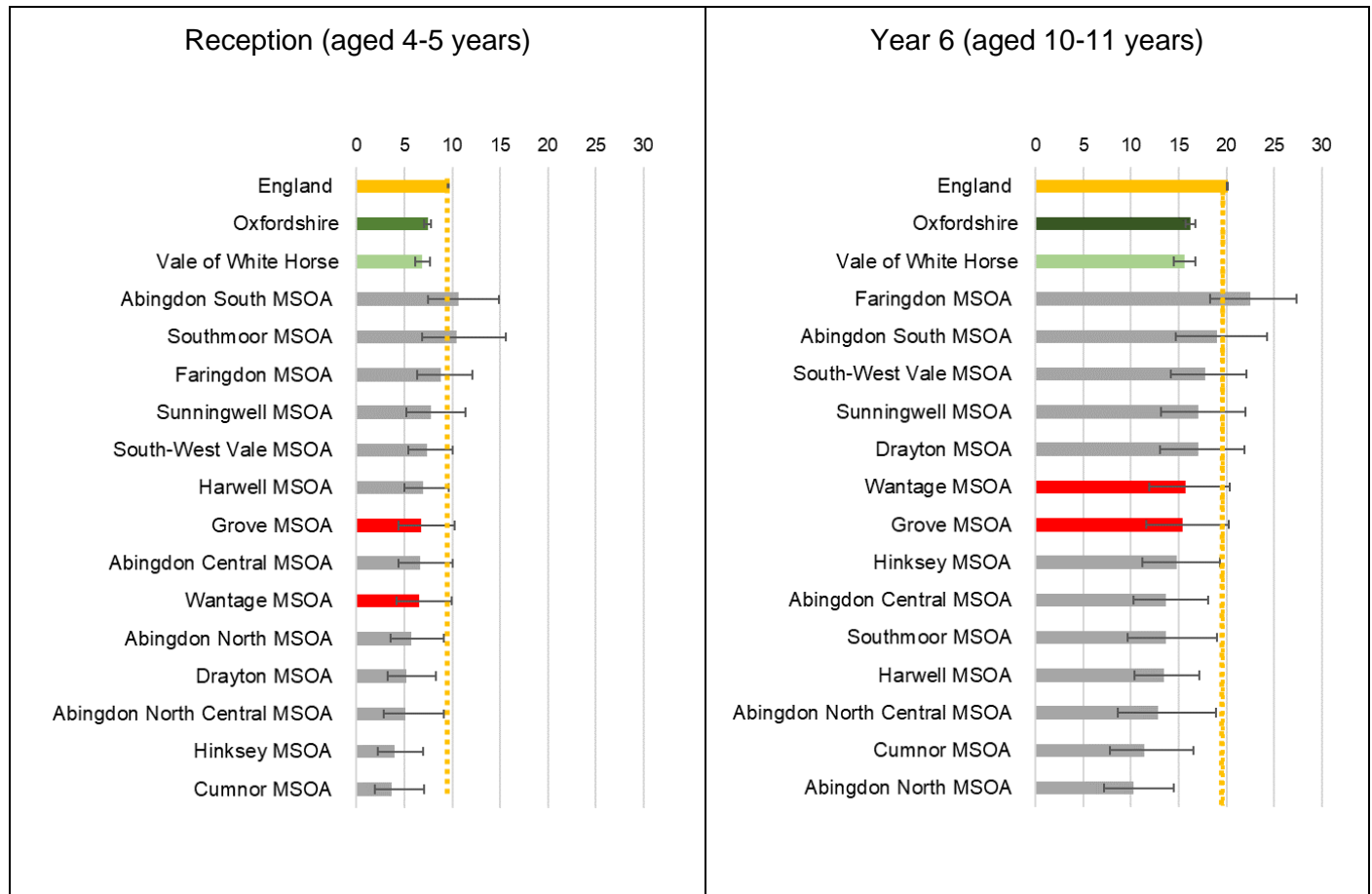
Note: for Oxfordshire's local authorities, including Vale of the White Horse, the Active Lives survey is completed by a minimum of 500 respondents, which is 20-30 people per MSOA. This is too few to derive precise direct estimates.

<sup>3</sup> <https://www.sportengland.org/know-your-audience/data/active-lives/active-lives-data-tables>

### 5.4.2 Child obesity

The latest data on child obesity from the National Child Measurement Programme (NCMP, 3 years combined 2016/17 to 2018/19) shows that for both reception children (aged 4-5 years), and year 6 children (aged 10-11 years), the proportion who are obese in Wantage and Grove is similar to that for the district and county.

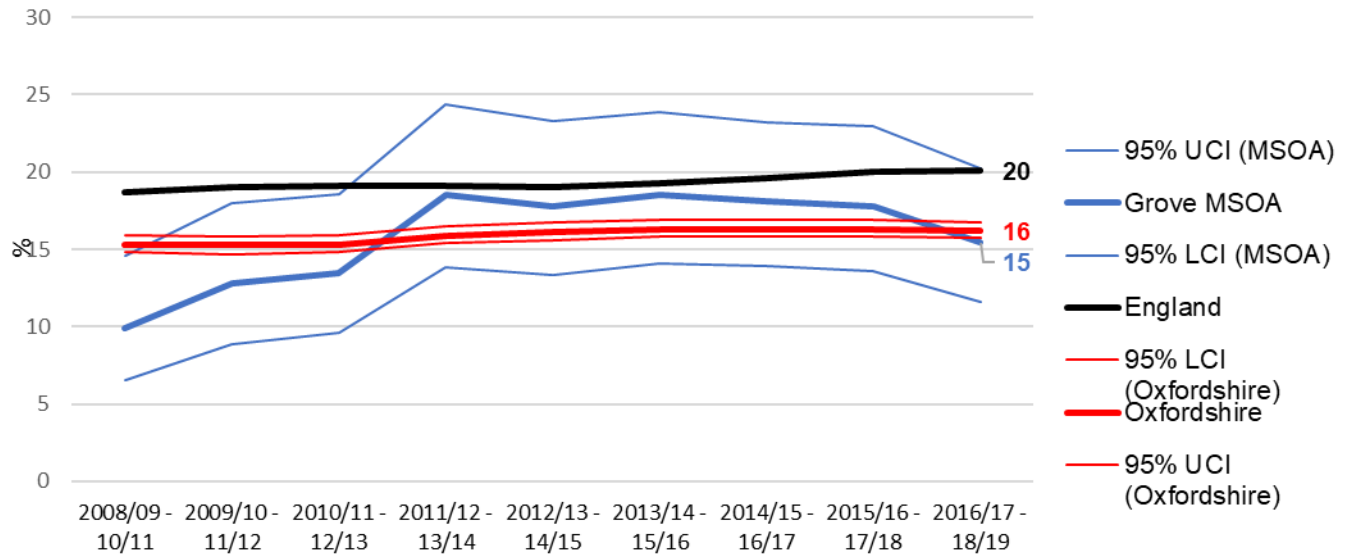
**Figure 11 Prevalence of obesity among children 2016/17 to 2018/19 (showing 95% confidence intervals)**



Source: [National Child Measurement Programme](#)

The 3 year average rate of year 6 child obesity in Grove MSOA appears to have increased slightly between 2008/09 and 2018/19, however it is unclear whether this increase is statistically significant.

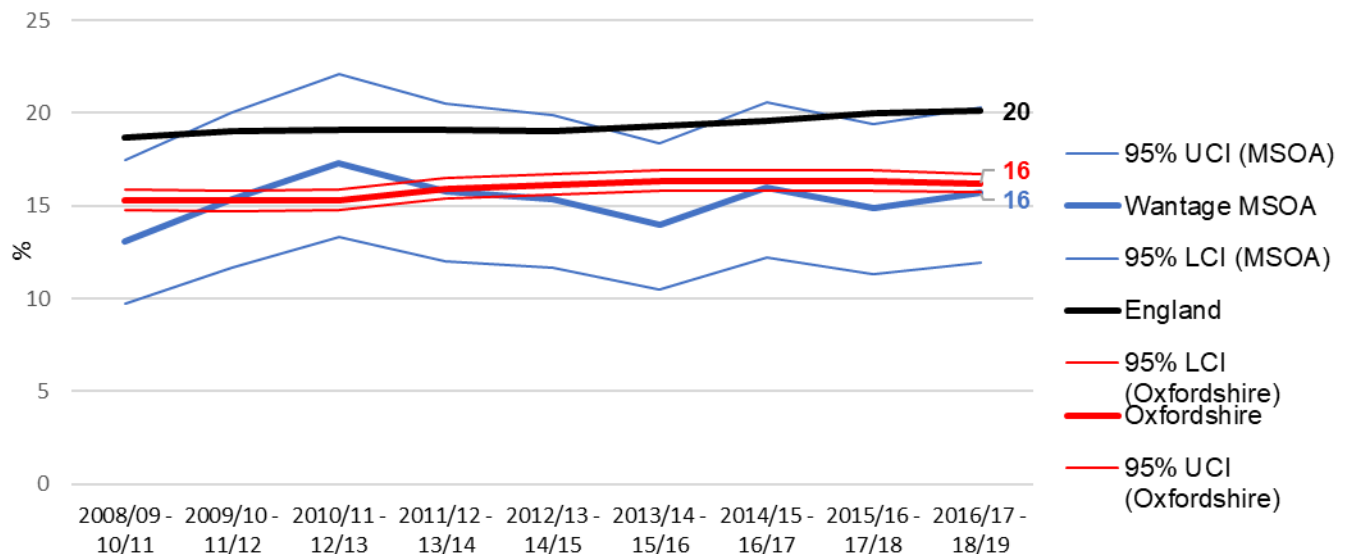
**Figure 12: Grove MSOA Year 6 child obesity trend**



Source: [National Child Measurement Programme](#)

The 3 year average rate of year 6 child obesity in Wantage MSOA remained relatively stable between 2008/09 and 2018/19, keeping similar to the county and national rates.

**Figure 13: Wantage MSOA Year 6 child obesity**



Source: [National Child Measurement Programme](#)

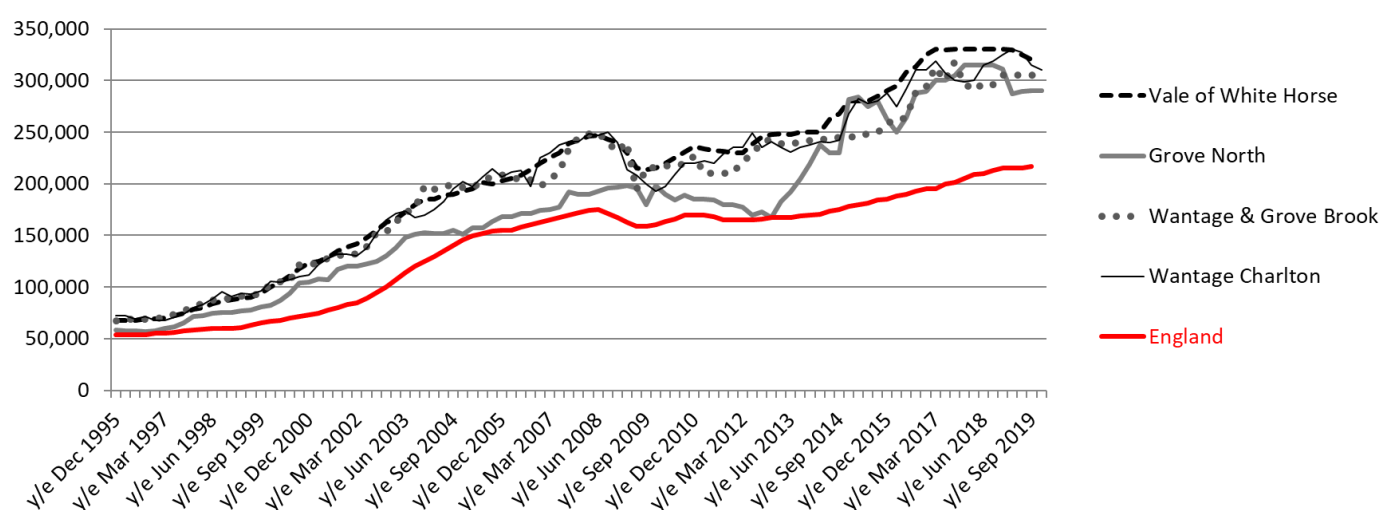


## 6 Other - house prices and commuting data

Median house prices are very dependent on the mix of housing sold (detached, semi-detached, terraced, flats). Looking at individual housing types gives a more comparable trend.

Over the past 5 years (year ending December 2014 to year ending December 2019), median prices for semi-detached housing in Wantage and Grove generally increased in line with the Vale of White Horse district rate. Grove North typically has the lowest house prices and has experienced the slowest growth between December 2014 and December 2019.

**Figure 14 Median price paid for semi-detached dwellings –Wantage and Grove wards**



Source: [ONS House price statistics for small areas to year ending December 2019](#); quarterly rolling year dataset 37

**Table 5 Median price paid for semi-detached dwellings, Year ending September 2014 to year ending September 2019 – Wantage and Grove wards**

	Year ending Dec 2014	Year ending Dec 2019	difference	
Grove North	281,473	289,995	8,523	+3%
Wantage & Grove Brook	246,000	303,998	57,998	+24%
Wantage Charlton	268,000	310,000	42,000	+16%
Vale of White Horse	268,020	320,000	51,980	+19%
England	175,000	216,500	41,500	+24%

Source: [ONS House price statistics for small areas to year ending December 2019](#); quarterly rolling year dataset 37

### Travelling to work

*The most recent data on travelling to work is still the 2011 Census.*

*The travel to work data in this section is for the areas covered by Middle Layer Super Output Areas 011 (Grove) and 014 (the majority of Wantage town). MSOA 015, which includes the southern part of Wantage, is excluded as this wide rural area includes the employment centres of Milton Park, Harwell and Rutherford Appleton Laboratories, all outside of Wantage and Grove.*

According to the 2011 Census travel to work statistics, there was just under 9,000 people living in Wantage and Grove (MSOA 011 and 014) in employment the week before the Census.

Of these, around a third (36%, 3,200) were living and working in Wantage and Grove and 64% worked outside the area. This includes people working mainly at or from home in Wantage and Grove (817) and employed residents with no fixed place of work (640).

Looking just at commuting patterns (i.e. excluding people working from home and with no fixed place of work) shows that **88% of commuter's resident in Wantage and Grove travelled to work within Oxfordshire**. The local authority areas outside Oxfordshire with the highest number of out-commuters from Wantage and Grove was West Berkshire (276, 4%). London accounted for 140 commutes (1.9%).

The greatest numbers of commuters to Wantage and Grove from outside the area were mainly living elsewhere in Vale of White Horse (27% of commuters).

## ANNEX 1: Data sources for indicators used in ward health profiles

**Table 6 Indicators used in ward profiles from Public Health England Local Health (section 5.1)**

Income deprivation - English Indices of Deprivation 2015 (%)	IMD 2015
Child Poverty - English Indices of Deprivation 2015 (%)	
Child Development at age 5 (%)	DfE 2014
GCSE Achievement (5A*-C inc. Eng & Maths) (%)	DfE 2013/14
Unemployment (%)	ONS from nomis (last updated 2019)
Long Term Unemployment (Rate/1,000 working age population)	
Older people living alone (%)	ONS Census 2011
Older People in Deprivation - English Indices of Deprivation 2015 (%)	IMD 2015
Children with excess weight, Reception Year (%)	NCMP (last updated 2020)
Obese Children, Reception Year (%)	
Children with excess weight, Year 6 (%)	
Obese Children, Year 6 (%)	
Emergency hospital admissions for all causes (SAR)	Hospital Episode Statistics, NHS Digital (last updated 2019)
Emergency hospital admissions for CHD (SAR)	
Emergency hospital admissions for stroke (SAR)	
Emergency hospital admissions for Myocardial Infarction (heart attack) (SAR)	
Emergency hospital admissions for Chronic Obstructive Pulmonary Disease (COPD) (SAR)	
Incidence of all cancer (SIR / per 100)	National Cancer Registration and Analysis Services' Cancer Analysis System (last updated 2019)
Incidence of breast cancer (SIR / per 100)	
Incidence of colorectal cancer (SIR / per 100)	
Incidence of lung cancer (SIR / per 100)	
Incidence of prostate cancer (SIR / per 100)	
Hospital stays for self harm (SAR)	Hospital Episode Statistics, NHS Digital (last updated 2019)
Hospital stays for alcohol related harm (Narrow definition) (SAR)	
Hospital stays for alcohol related harm (Broad definition) (SAR)	
Emergency hospital admissions for hip fracture in 65+ (SAR)	
Limiting long-term illness or disability (%)	ONS Census 2011
Back pain prevalence in people of all ages (%)	Musculoskeletal (MSK) Calculator by Imperial College London for Arthritis
Severe back pain prevalence in people of all ages (%)	

	Research UK based on data from the Health Survey for England (HSE) (last updated 2019)
Life expectancy at birth for males, 2013-2017 (years)	Public Health England from ONS 2013-2017 (last updated 2019)
Life expectancy at birth for females, 2013-2017 (years)	
Deaths from all causes, all ages (SMR)	
Deaths from all causes, under 75 years (SMR)	
Deaths from all cancer, all ages (SMR)	
Deaths from all cancer, under 75 years (SMR)	
Deaths from circulatory disease, all ages (SMR)	
Deaths from circulatory disease, under 75 years (SMR)	
Deaths from coronary heart disease, all ages (SMR)	
Deaths from stroke, all ages, all persons (SMR)	
Deaths from respiratory diseases, all ages, all persons (SMR)	
Deaths from causes considered preventable (SMR)	

Source: Indicator dates available from the 'Definitions' section of the Local Health tool on the [NHS fingertips website](#).

## ANNEX 2: Data sources used in this report

Data sources used in this report (links last accessed November 2020)

Data	Page(s)	Source
Administrative boundaries	5-8	<a href="https://geoportal.statistics.gov.uk/">https://geoportal.statistics.gov.uk/</a>
Locations of GP practices	8	Oxfordshire County Council
ONS mid-year population estimates	9-10	<a href="https://www.nomisweb.co.uk/">https://www.nomisweb.co.uk/</a> (‘Small area by single year of age’ query)
2011 Census: ethnicity	10	<a href="https://www.nomisweb.co.uk/">https://www.nomisweb.co.uk/</a> (Census 2011 ‘KS201EW’ query)
2011 Census: country of birth	10	<a href="https://www.nomisweb.co.uk/">https://www.nomisweb.co.uk/</a> (Census 2011 ‘QS203EW’ query)
2011 Census: people living in communal establishments	11	<a href="https://www.nomisweb.co.uk/">https://www.nomisweb.co.uk/</a> (Census 2011 ‘QS421UK’ query)
2019 Indices of Multiple Deprivation - scores	12	<a href="https://www.gov.uk/government/statistics/english-indices-of-deprivation-2019">https://www.gov.uk/government/statistics/english-indices-of-deprivation-2019</a> (File 1: index of multiple deprivation)
2019 Indices of Multiple Deprivation - maps	13	<a href="https://data-communities.opendata.arcgis.com/">https://data-communities.opendata.arcgis.com/</a> (Indices of Multiple Deprivation (IMD) 2019 dataset)
2017/18 Child Poverty Estimates	14	<a href="http://www.endchildpoverty.org.uk/poverty-in-your-area-2019/">http://www.endchildpoverty.org.uk/poverty-in-your-area-2019/</a> (‘Local Data’)
2019 PHE Health Indicators	15-17	<a href="https://www.localhealth.org.uk/">https://www.localhealth.org.uk/</a> (Indicators > Summary)
2020 numbers of care homes and beds	18	<a href="https://www.cqc.org.uk/about-us/transparency/using-cqc-data">https://www.cqc.org.uk/about-us/transparency/using-cqc-data</a> (‘Care directory with filters’)
2011 Census: people providing unpaid care	18	<a href="https://www.nomisweb.co.uk/">https://www.nomisweb.co.uk/</a> (Census 2011 ‘LC3304EW’ query)



2019/20 Prevalence of diabetes	19	<a href="https://digital.nhs.uk/data-and-information/publications/statistical/quality-and-outcomes-framework-achievement-prevalence-and-exceptions-data">https://digital.nhs.uk/data-and-information/publications/statistical/quality-and-outcomes-framework-achievement-prevalence-and-exceptions-data</a> (Prevalence, achievement and personalised care adjustments; High dependency and other long term conditions group; GP practice level)
2019/20 Prevalence of dementia and depression	19-20	<a href="https://digital.nhs.uk/data-and-information/publications/statistical/quality-and-outcomes-framework-achievement-prevalence-and-exceptions-data">https://digital.nhs.uk/data-and-information/publications/statistical/quality-and-outcomes-framework-achievement-prevalence-and-exceptions-data</a> (Prevalence, achievement and personalised care adjustments; mental health and neurology group; GP practice level)
2018/19 Sport England physical activity estimates	21	<a href="https://www.sportengland.org/know-your-audience/data/active-lives/active-lives-data-tables">https://www.sportengland.org/know-your-audience/data/active-lives/active-lives-data-tables</a> (Small Area Estimates – Activity Levels Estimates for Middle Super Output Areas)
Child Obesity MSOA area comparisons	22	PHE Fingertips tool > NCMP and Child Obesity Profile > <a href="#">NCMP small area data</a>
Child obesity trends over time	23	<a href="https://www.gov.uk/government/statistics/child-obesity-and-excess-weight-small-area-level-data">https://www.gov.uk/government/statistics/child-obesity-and-excess-weight-small-area-level-data</a> (Small area NCMP data: MSOA)
House price statistics	24	<a href="https://www.ons.gov.uk/peoplepopulationandcommunity/housing/bulletins/housepricestatisticsforsmallareas/yearendingdecember2019">https://www.ons.gov.uk/peoplepopulationandcommunity/housing/bulletins/housepricestatisticsforsmallareas/yearendingdecember2019</a> (Median house prices by ward: HPSSA dataset 37)
2011 Census: Travelling to work	25	<a href="https://www.nomisweb.co.uk/">https://www.nomisweb.co.uk/</a> (Census 2011 'WF01BEW' query – commuting destinations) (Census 2011 'QS701EW' query – modes of transport)

For more data and statistics on Oxfordshire and place profiles please visit [Oxfordshire Insight](#)