

Mapping Vulnerable Children 2016/17

This work was commissioned by the Performance, Audit & Quality Assurance subgroup of the Safeguarding Board and Children's Trust. It provides an overview of activity across agencies at a local geographical level. Further information on any specific service is available from that service. This work is about identifying the geographical overlap between services.

Maps and charts are reported at ward level on the use of social care; health and police services to identify geographical hotspots and school attendance data is reported by school partnerships. The data on attendance is taken from the School Locality Profiles for 2015/16 academic year.

Index

- [Pages 6-7: Referrals to Social Care by Ward](#)
- [Pages 8-9: Domestic Violence Notifications by Ward](#)
- [Pages 10-11: CAMHS Referrals by Ward](#)
- [Pages 12-13: Children as Victims of Crime by Ward](#)
- [Pages 14-16: Activity Levels by Deprivation](#)
- [Pages 17-19: Abingdon Locality – School Profile](#)
- [Pages 20-21: Farringdon & Wantage Locality – School Profile](#)

Overview

Oxfordshire

There are clear geographical overlaps e.g. areas of higher incidences of domestic violence notifications tend to have higher levels of social care referrals, and more children are victims of crime. These are also linked to levels of deprivation. There is less of an overlap with referrals to the CAMHS service. Additional work was carried out on children as victims of crime and a quarter of all victims were of school age; and the crime was during the school day in term time.

Vale

- Levels of activity in the Vale are similar to Oxfordshire as a whole.
- Abingdon Caldecott has high levels of activity, with children more than twice as likely to be referred to social care, live in a house where there was a domestic violence notification or be a victim of crime than the rest of the district

Vale

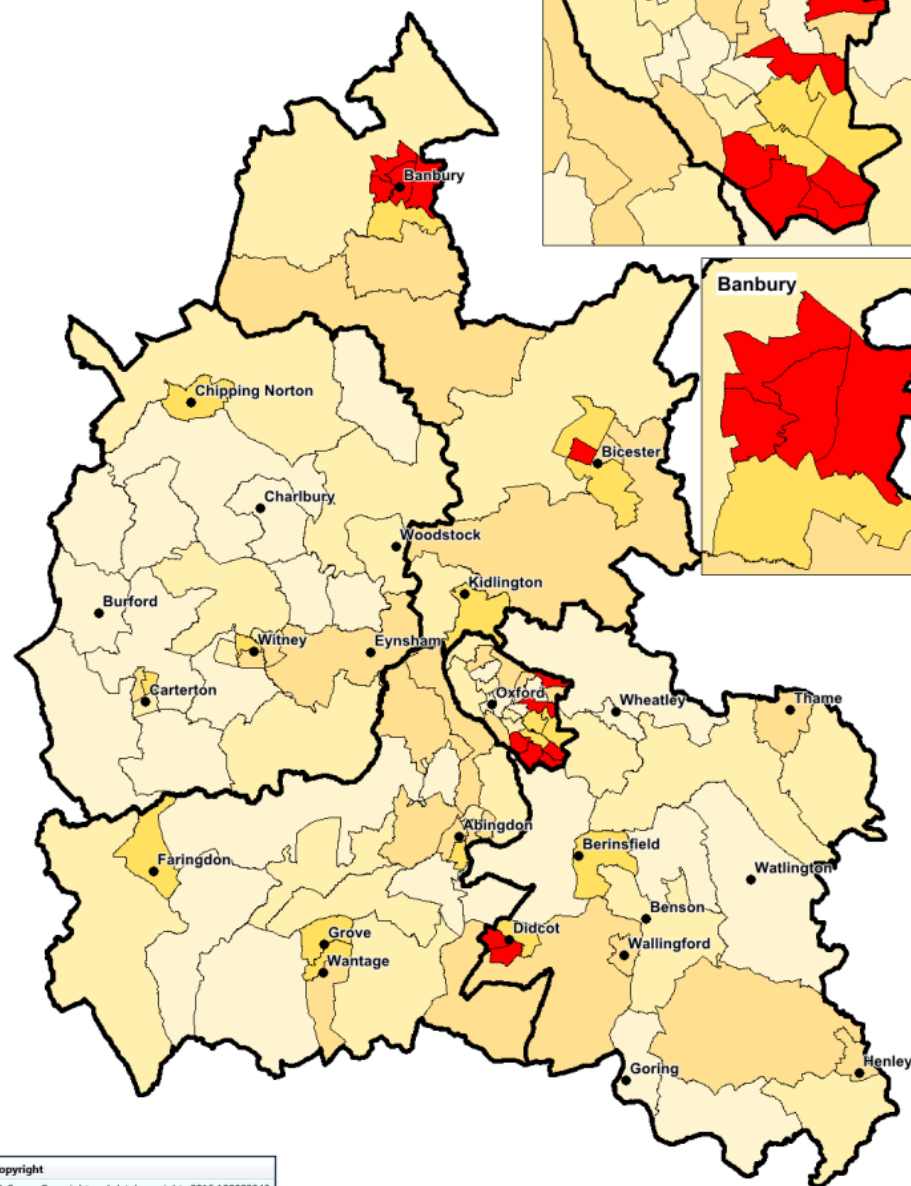
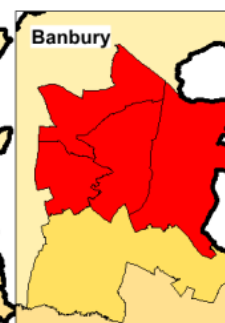
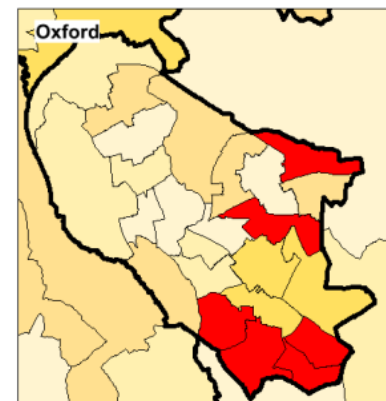
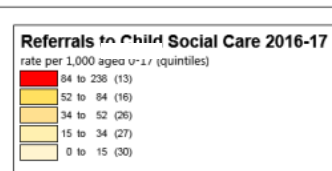
	Social care referrals			DV notification			Victims of Crime			CAMHS referral		
	Rate	Rank District	Rank County	Rate	Rank District	Rank County	Rate	Rank District	Rank County	Rate	Rank District	Rank County
Abingdon Caldecott	81.2	1	14	42.2	1	16	50.8	1	9	54.2	4	15
Faringdon	72.6	2	15	18.7	12	53	36.4	4	22	49.5	7	25
Wantage Charlton	50.7	6	34	24.2	7	44	41.1	2	19	56.0	3	10
Abingdon Abbey Northcourt	46.8	9	40	31.2	2	32	38.3	3	21	34.2	19	71
Blewbury & Harwell	47.6	8	38	21.9	9	48	29.0	8	34	76.2	1	2
Grove North	60.1	3	23	28.1	3	36	36.1	5	23	57.4	2	9
Wantage & Grove Brook	53.1	4	29	23.4	8	46	33.8	6	26	47.4	8	26
Abingdon Fitzharris	50.7	6	34	18.7	12	53	31.0	7	29	33.1	20	74
Abingdon Peachcroft	51.5	5	30	16.4	15	65	20.9	14	53	38.8	13	53
Marcham	35.1	12	54	27.3	4	38	21.6	12	49	14.5	24	107
Watchfield & Shrivenham	30.4	13	56	25.0	5	42	13.5	20	86	22.1	22	99
Botley & Sunningwell	36.7	11	49	18.0	14	58	21.3	13	51	35.4	17	67
Cumnor	39.0	10	45	14.1	16	71	26.2	10	39	43.7	11	38
Abingdon Dunmore	20.3	16	71	19.5	10	49	12.3	21	89	36.3	15	64
Kennington & Radley	24.2	14	65	25.0	5	42	11.0	23	97	21.7	23	100
Hendreds	19.5	17	73	9.4	20	88	16.7	17	72	38.0	14	56
Kingston Bagpuize	17.2	18	77	19.5	10	49	20.2	15	59	41.3	12	45
Ridgeway	12.5	21	92	11.7	18	78	12.3	22	90	35.2	18	68
Steventon & the Hanneys	21.1	15	69	10.1	19	86	21.7	11	48	52.7	6	18
Sutton Courtenay	13.3	19	88	5.5	24	98	16.1	18	77	43.8	10	37
Wootton	13.3	19	88	13.3	17	73	29.0	9	35	35.5	16	65
Drayton	10.9	22	97	6.2	23	96	13.5	19	83	53.2	5	17
Stanford	6.2	24	108	7.0	22	95	16.8	16	70	44.5	9	34
Thames	10.1	23	100	7.8	21	93	7.9	24	105	30.0	21	87
Median	32.8			18.7			21.4			40.1		
County Median	30.1			18.7			20.5			37.9		

These figures show by ward in The Vale the rate of social care referrals, domestic violence notifications, children as victims of crime and referrals to the CAMHS service. The wards are then ranked, with highest rates first against the other wards in the district (16) and then by the other wards in the county.

Analysis of..

- a) Data on children known to Oxfordshire County Council (matched at postcode level, 2016-17)
 - Referrals to Children's services
 - Children in household with police notification of domestic abuse
- b) Data from Thames Valley Police: child victims (at postcode level), April 15 to Dec16
- c) Data from Oxford Health: CAMHS referrals by ward (2016-17)
- d) Links between vulnerability and deprivation across Oxfordshire
- e) Persistent absence rates for 2015/16 academic year by locality

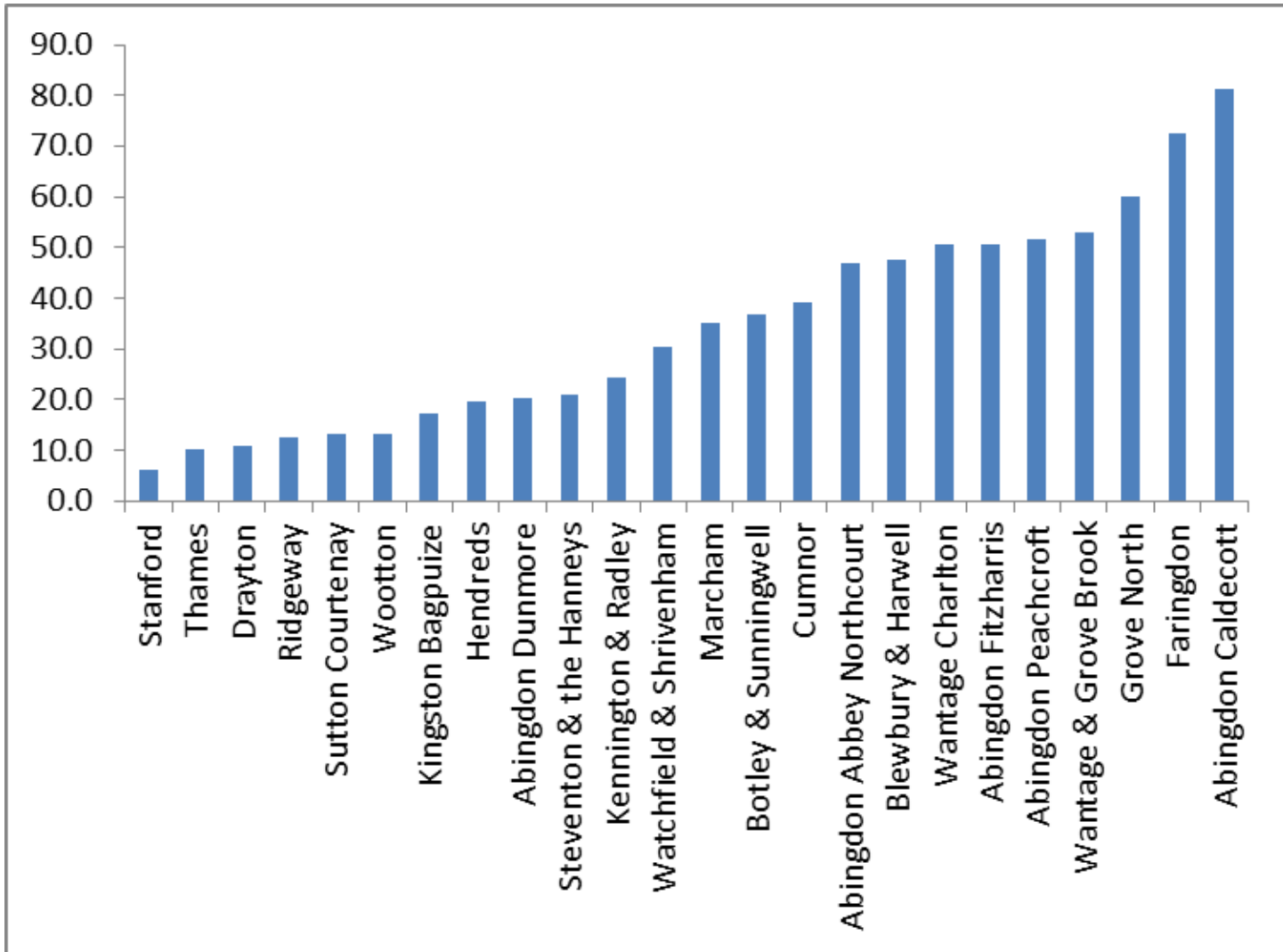
Referrals to Child Social Care 2016-17



Wards in top quintile

District	Ward	Count	Rate per 1,000 aged 0-17
Cherwell	Banbury Ruscott	304	237.3
	Banbury Grimsbury and Hightown	156	121.8
	Banbury Cross and Neithrop	154	120.2
	Bicester West	133	103.8
	Banbury Hardwick	108	84.3
Oxford	Blackbird Leys	172	134.3
	Barton and Sandhills	157	122.6
	Northfield Brook	140	109.3
	Churchill	138	107.7
	Littlemore	134	104.6
	Rose Hill and Iffley	114	89.0
South Oxon	Didcot South	143	111.6
	Didcot West	141	110.1

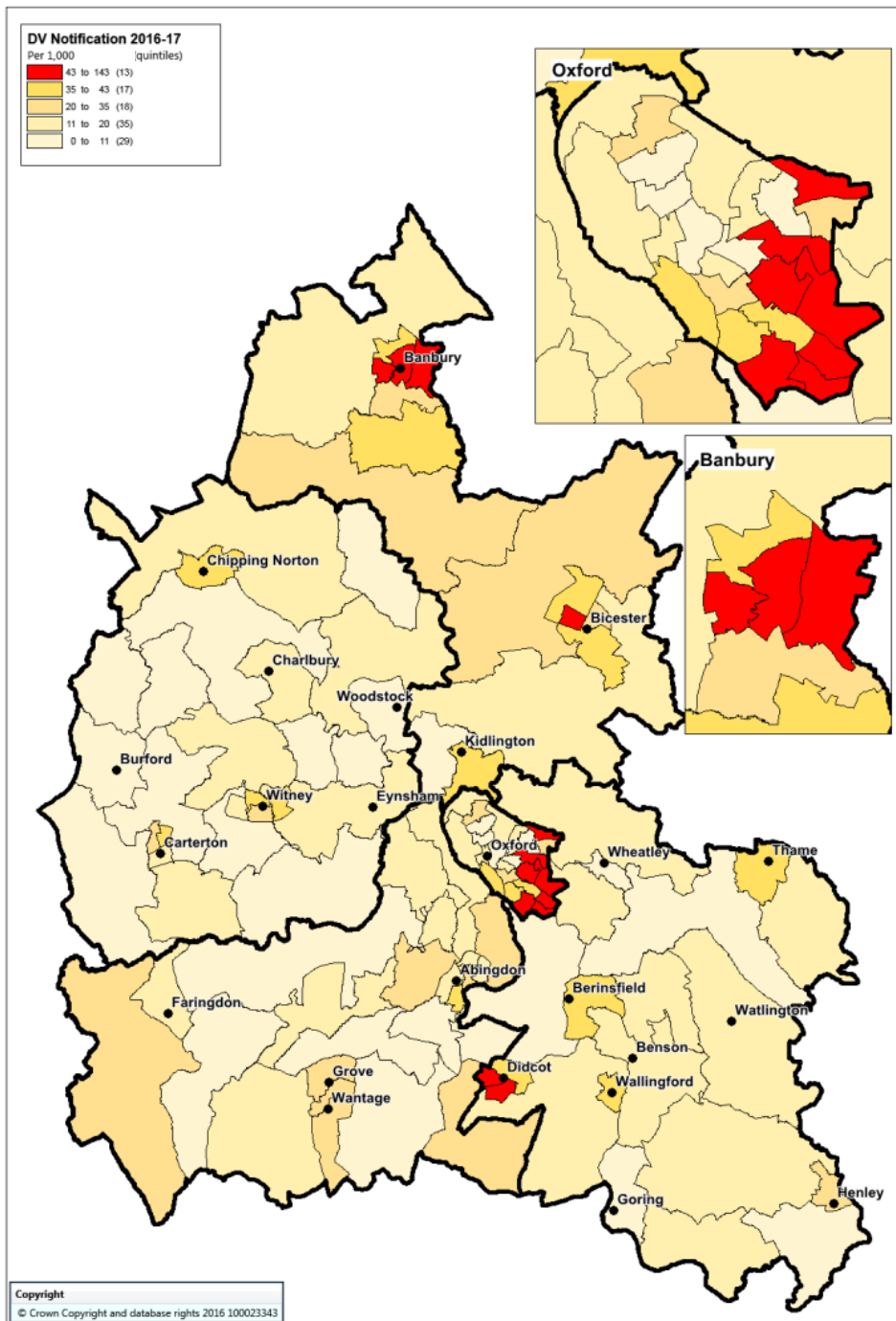
Referrals to social care per 1,000 people aged 0-17



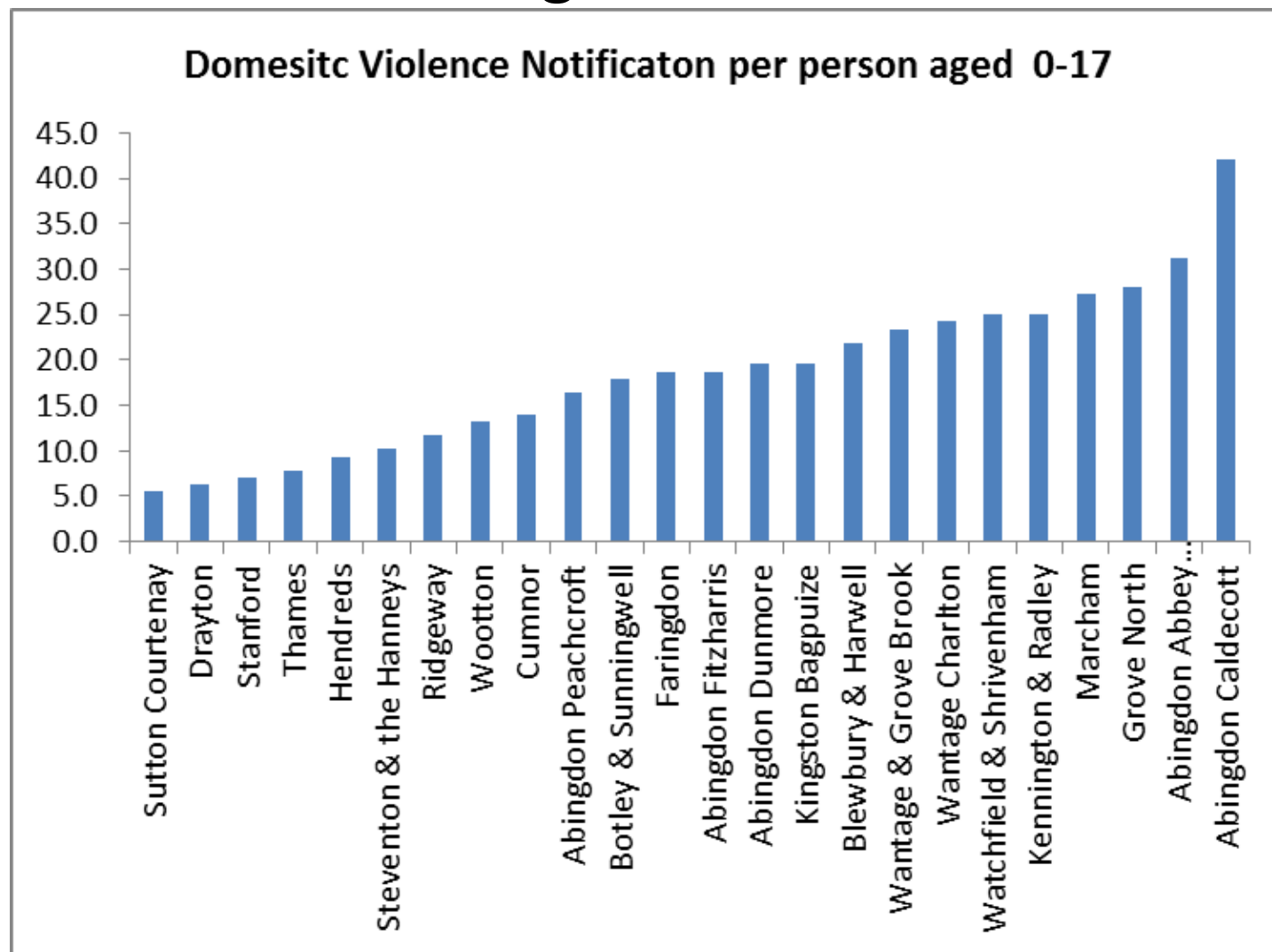
Domestic Violence notification with children 2016-17

Wards in top quintile

District	Ward	Count	Rate per 1,000 aged 0-17
Cherwell	Banbury Ruscote	182	142.1
	Banbury Grimsbury and Hightown	92	71.8
	Bicester West	92	71.8
	Banbury Cross and Neithrop	78	60.9
Oxford	Barton and Sandhills	85	66.4
	Northfield Brook	84	65.6
	Blackbird Leys	72	56.2
	Lye Valley	65	50.7
	Littlemore	63	49.2
	Churchill	62	48.4
	Cowley Marsh	62	48.4
	Didcot South	91	71.0
	Didcot West	81	63.2



Domestic Violence Notifications 1000 people aged 0-17

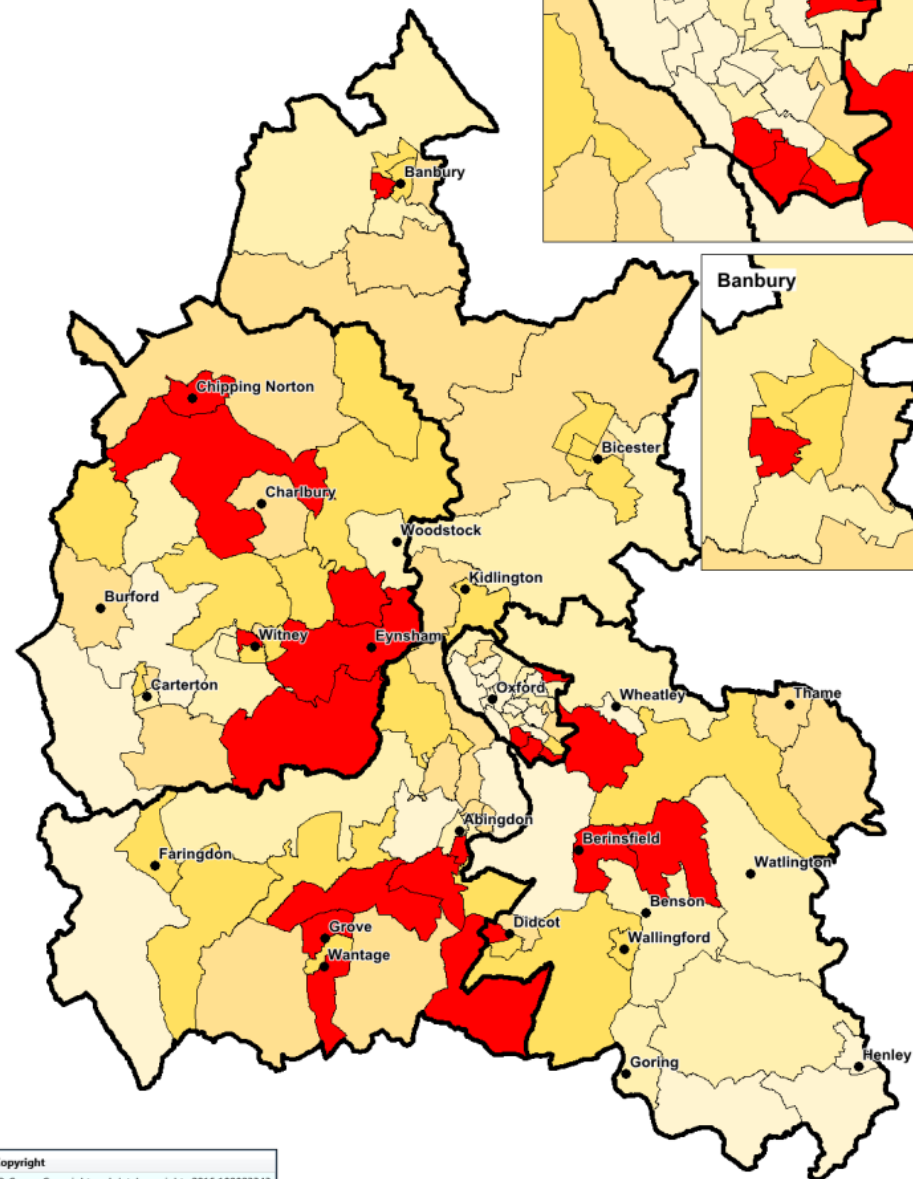
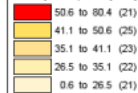


Referrals to Oxford Health CAMHS 2016-17

Wards in top quintile

District	Ward	Count	Rate per 1,000 aged 0-24
Cherwell	Banbury Ruscote	255	66.8
Oxford	Rose Hill and Iffley	121	57.9
	Barton and Sandhills	142	55.0
	Northfield Brook	155	54.3
	Littlemore	100	52.2
	Didcot West	118	80.4
South Oxon	Garsington & Horspath	51	58.2
	Chalgrove	54	54.7
	Berinsfield	68	53.4
	Blewbury & Harwell	99	76.2
	Grove North	92	57.4
Vale of WH	Wantage Charlton	102	56.0
	Abingdon Caldecott	120	54.2
	Drayton	46	53.2
	Steventon & the Hanneys	36	52.7
	Witney Central	93	62.0
	Chadlington and Churchill	29	59.2
	Freeland and Hanborough	63	58.9
West Oxon	Standlake, Aston and Stanton Harcol	65	55.6
	Eynsham and Cassington	78	52.4
	Chipping Norton	89	51.2

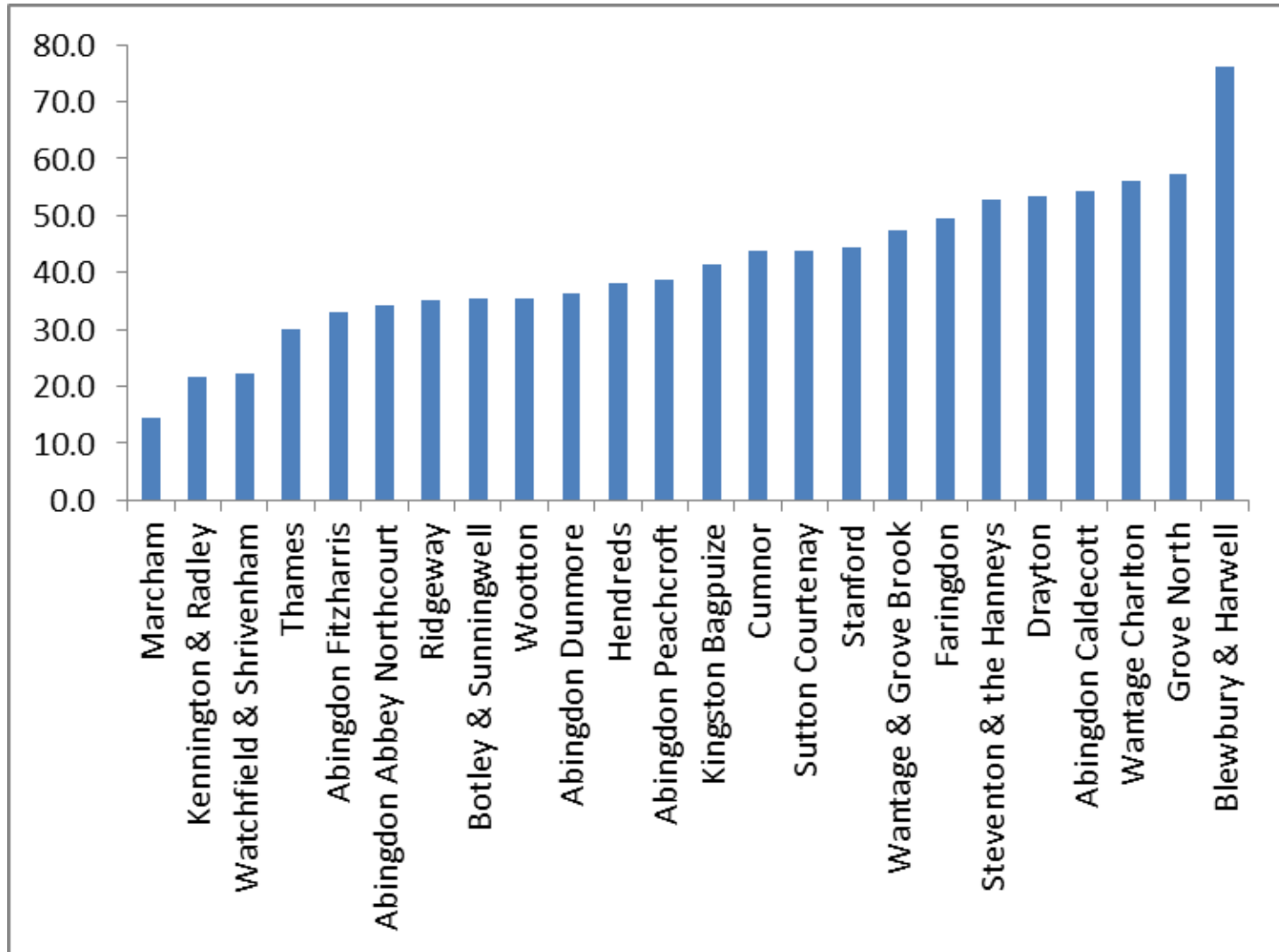
Referral to CAMHS 2016-17
rate per 1,000 people aged 0-24



Copyright

© Crown Copyright and database rights 2016 100023343

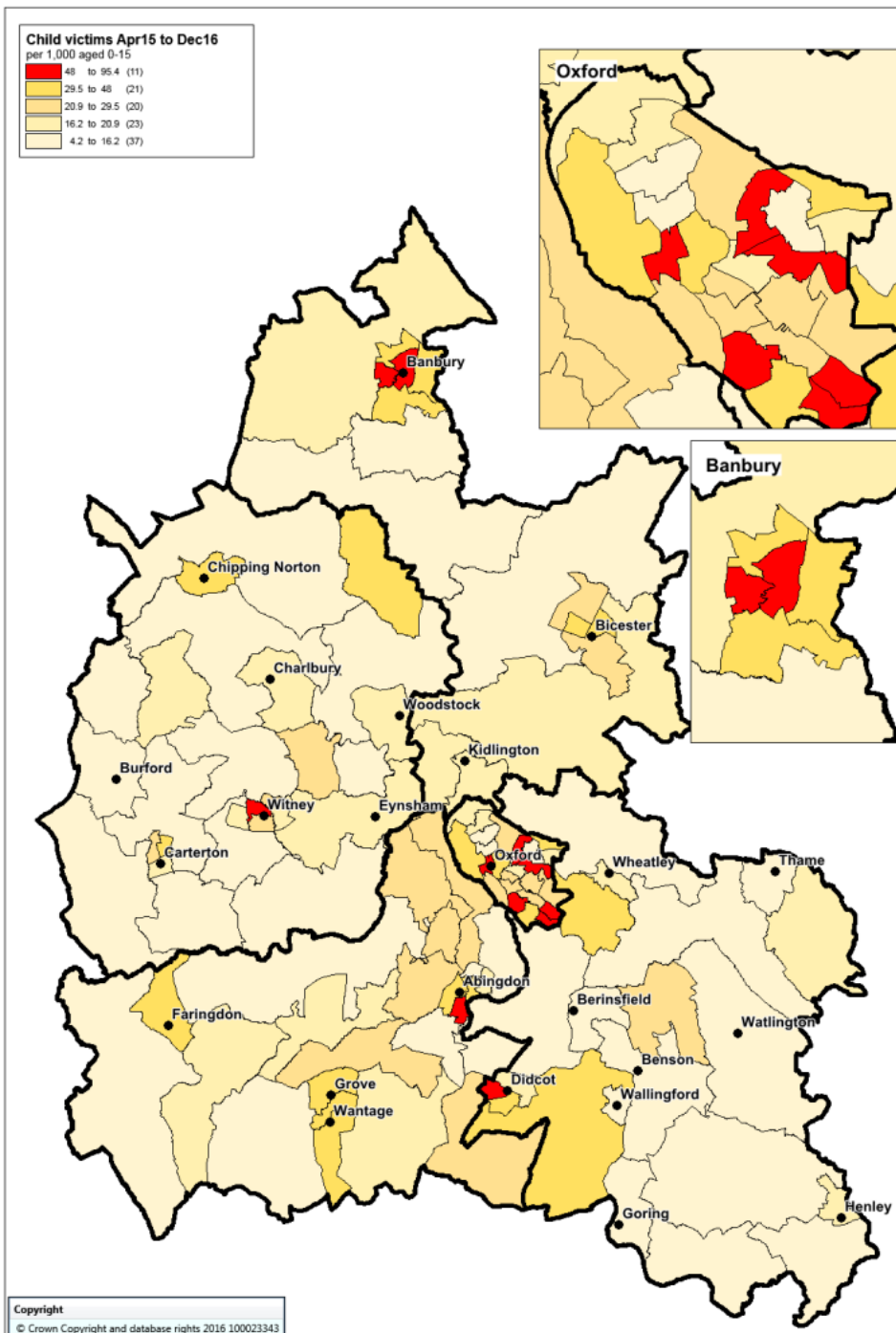
Referrals to CAMHS per 1000 people 0-24



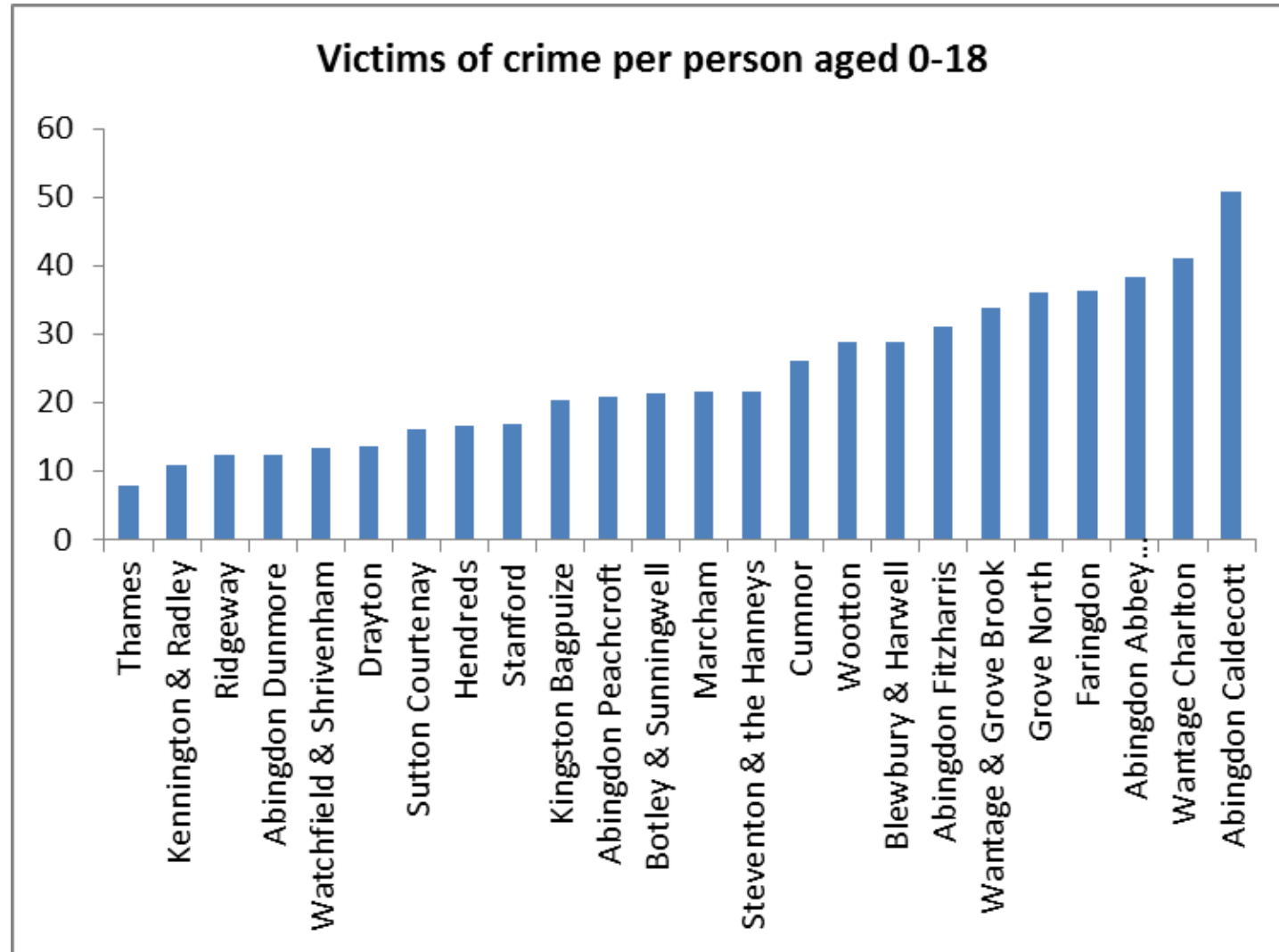
Child victims of crime

Wards in top quintile

District	Ward	Count	rate per 1,000 aged 0-15
Cherwell	Banbury Ruscote	203	78.4
	Banbury Cross and Neithrop	112	64.3
Oxford	Northfield Brook	121	60.5
	Churchill	64	58.2
	Headington Hill and Northwa	58	57.2
	Blackbird Leys	83	54.2
	Carfax	10	53.5
	Rose Hill and Iffley	70	49.3
South Oxon	Didcot West	92	95.3
Vale of WH	Abingdon Caldecott	76	50.8
West Oxon	Witney Central	49	50.6

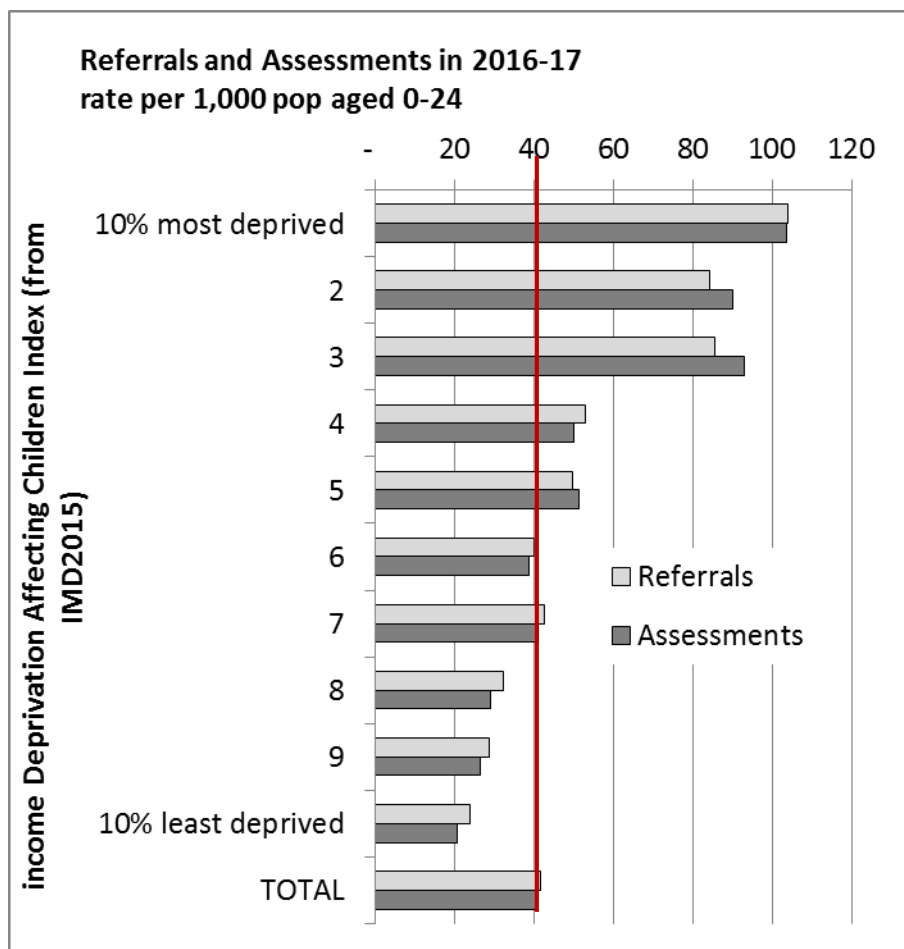


Child victims of Crime per 1000 people 0-17

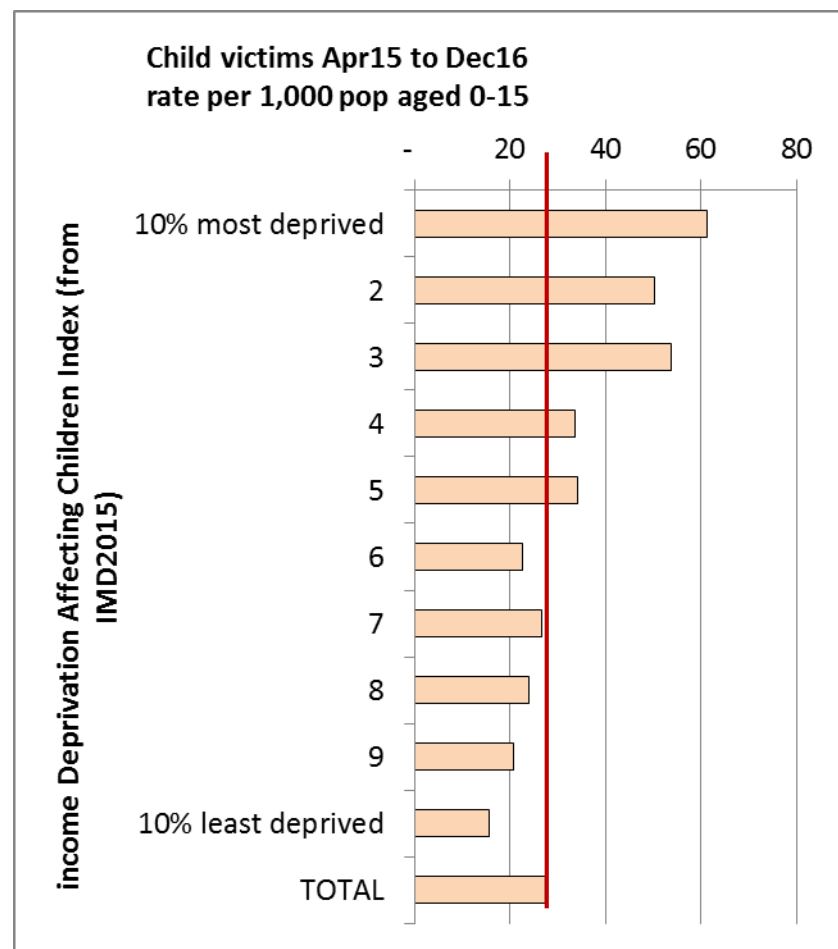


Analysis By income deprivation
affecting children

Vulnerable children data mapped to most vs least deprived areas on child poverty (income deprivation affecting children index 2015)

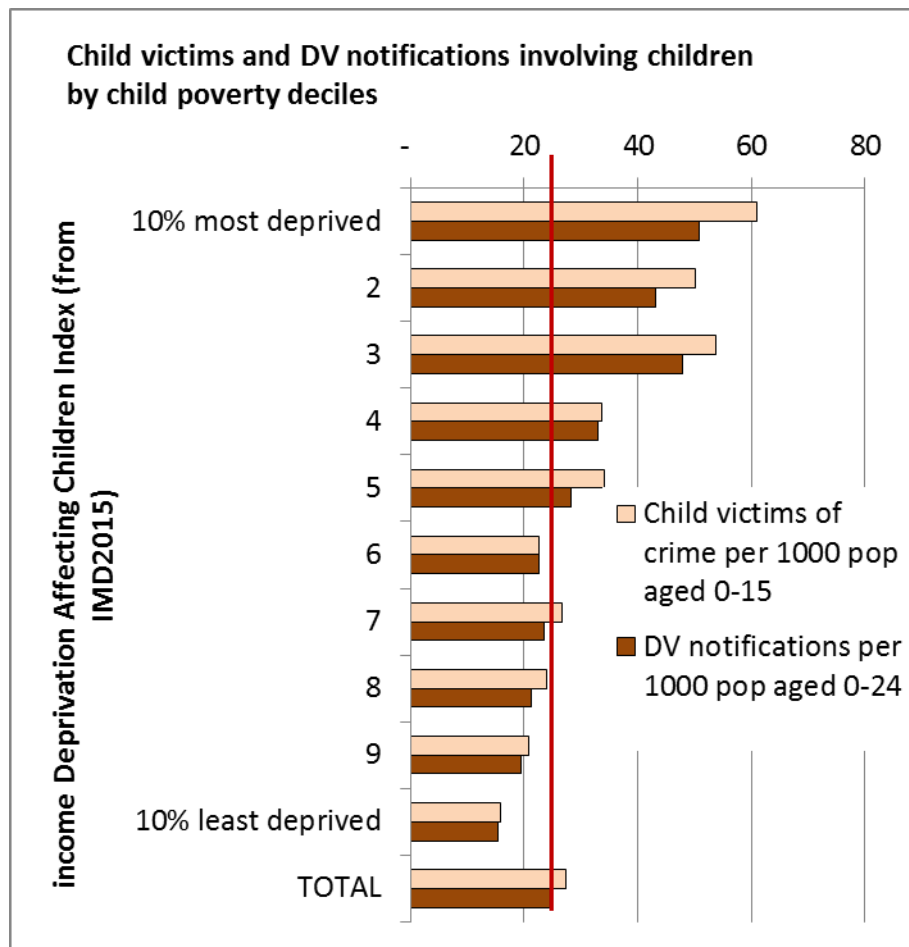


Oxfordshire County Council
5,903 child referral postcodes, 5,740 child assessment postcodes mapped



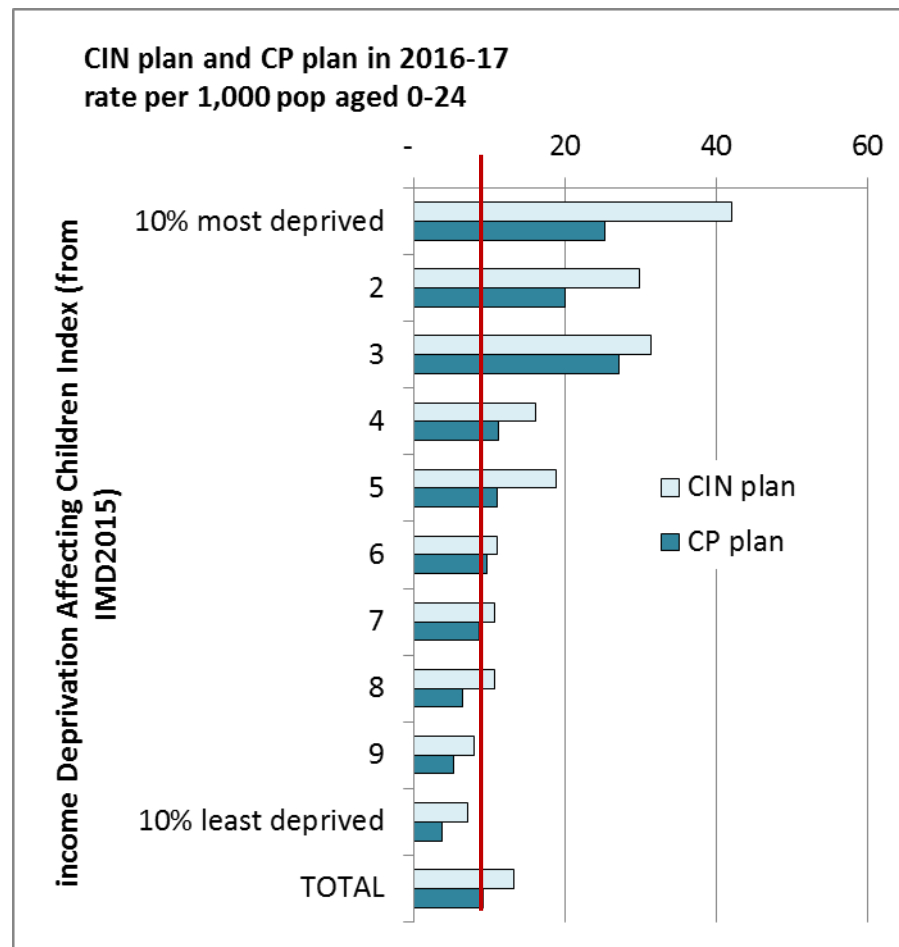
Thames Valley Police
3,348 child victim postcodes mapped

Vulnerable children data mapped to most vs least deprived areas on child poverty (income deprivation affecting children index 2015)



Thames Valley Police

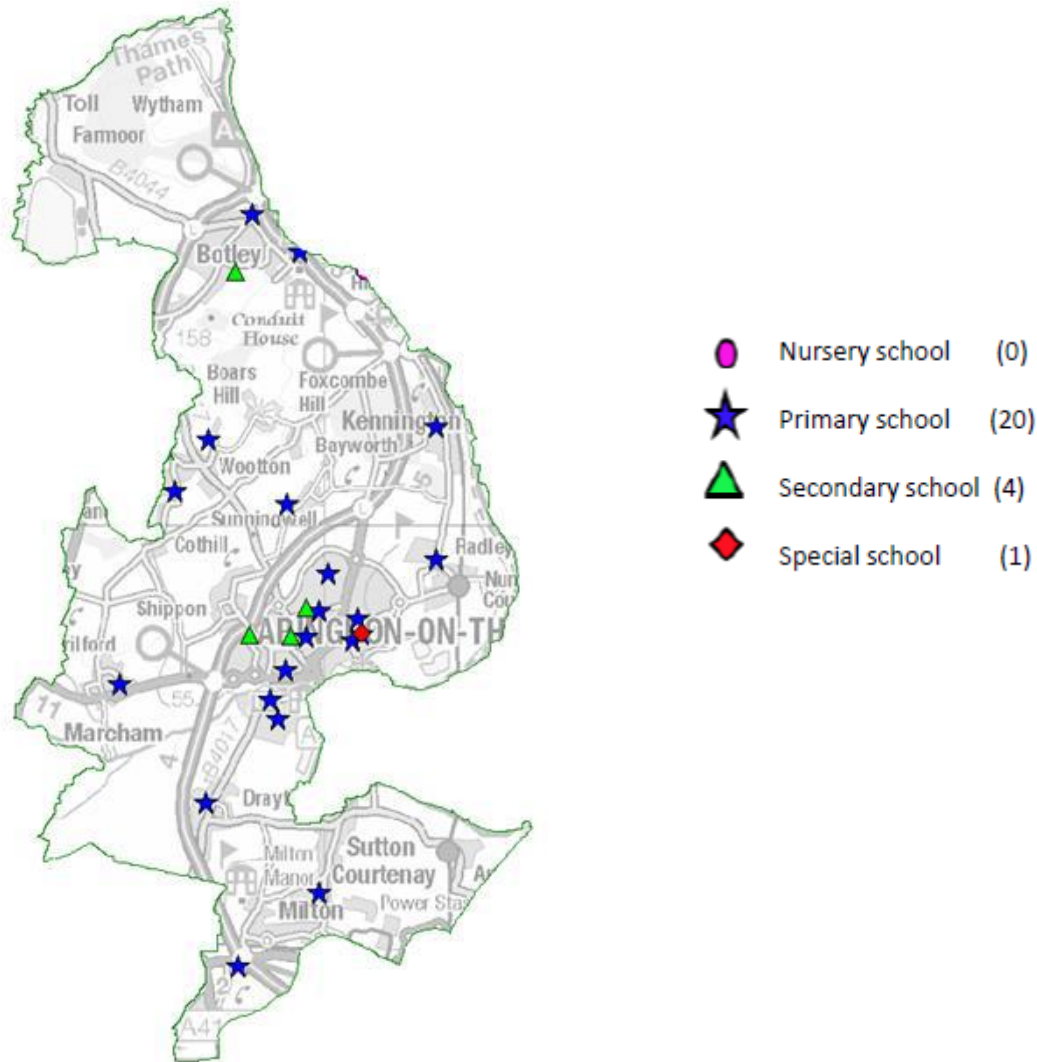
3,493 DV notification involving children postcodes mapped
3,348 child victims postcodes mapped



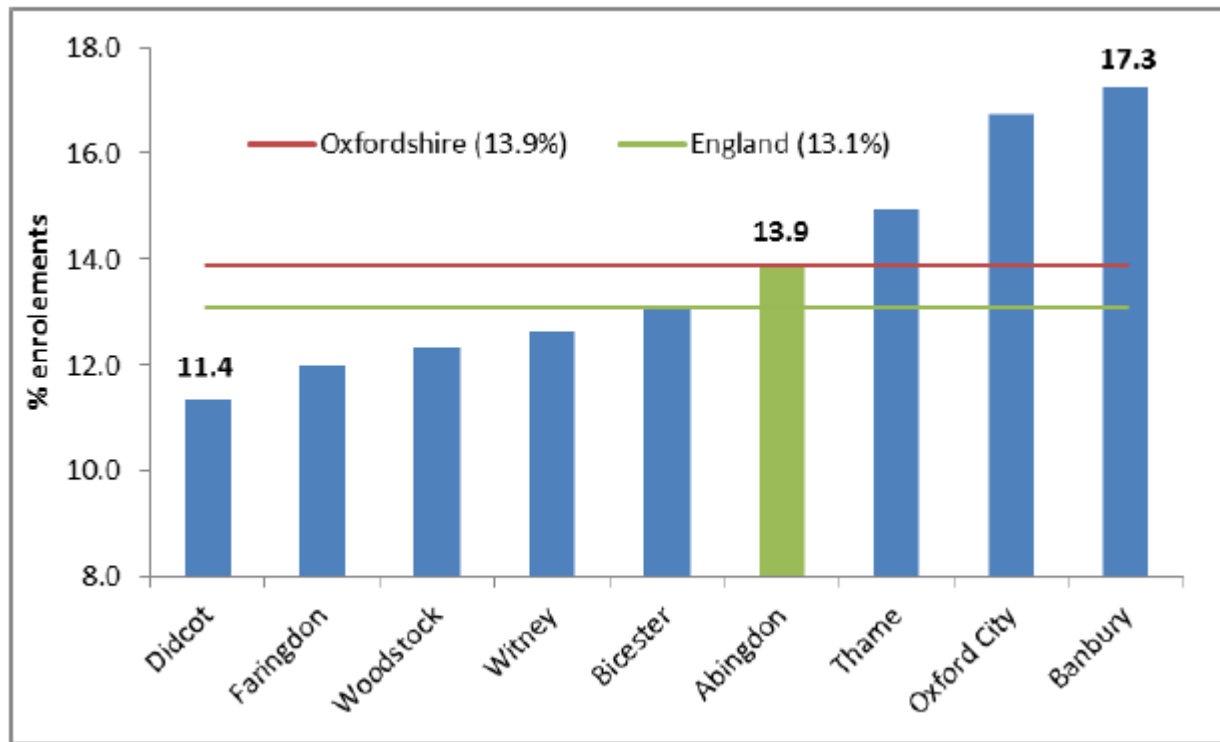
Oxfordshire County Council

1,877 Children in Need Plan postcodes mapped
1,302 Child Protection postcodes mapped

Abingdon Locality – School Profile



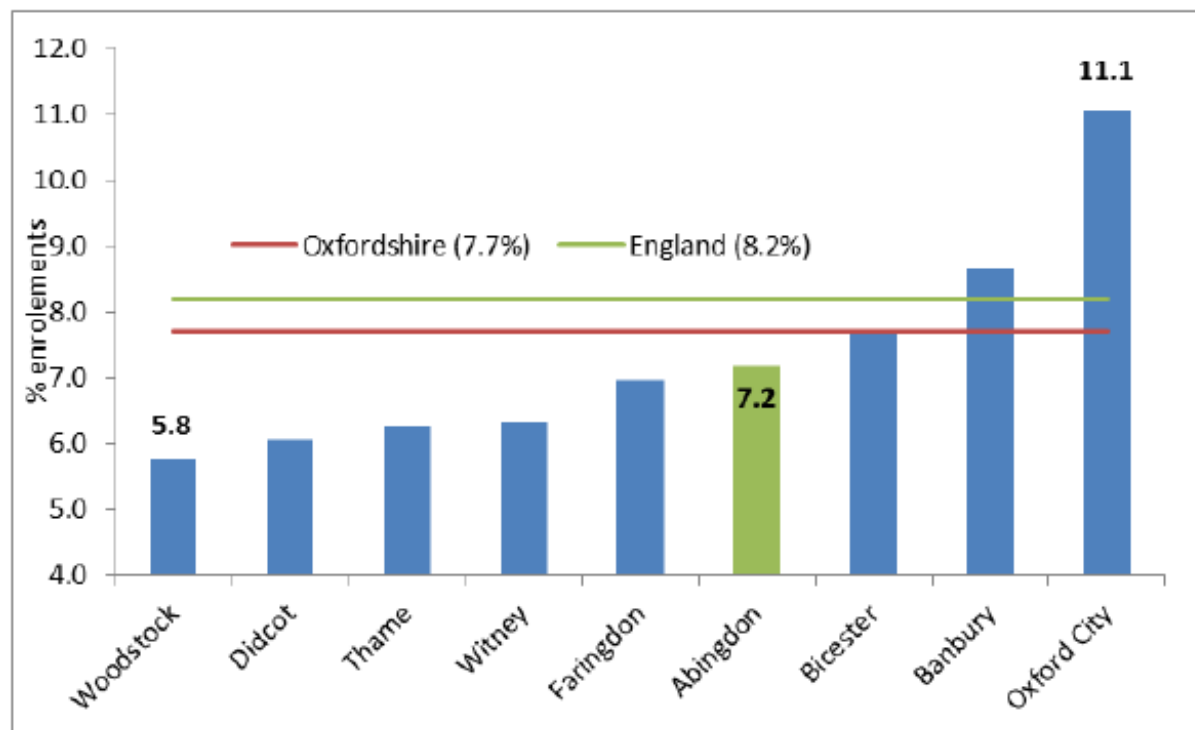
Persistent absence rates (secondary schools) 2015/16



In 2015/16, 443 pupils were classed as persistently absent from secondary schools in the Abingdon locality

249 children received a fixed term exclusion

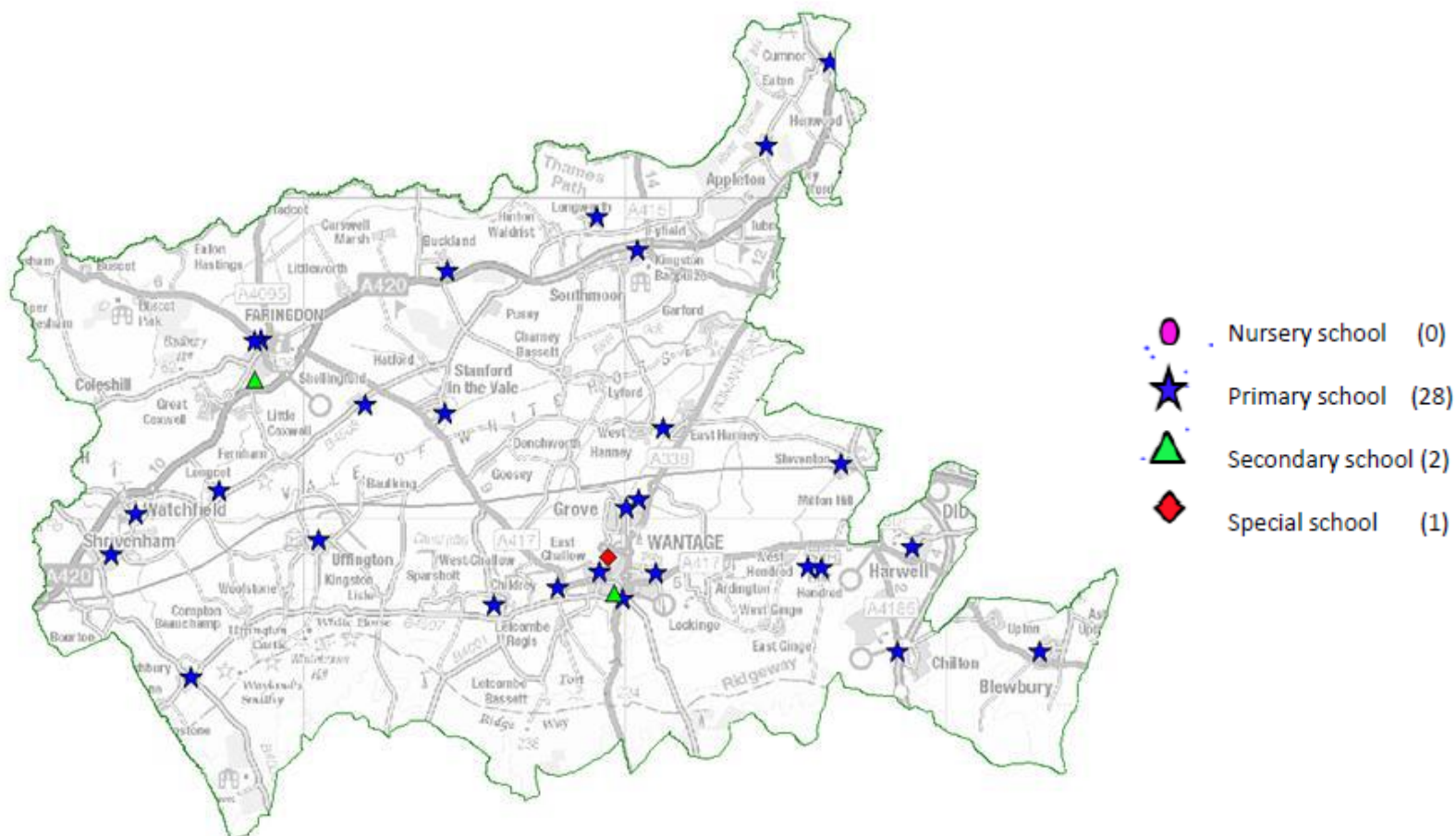
Persistent absence rates (primary schools) 2015/16



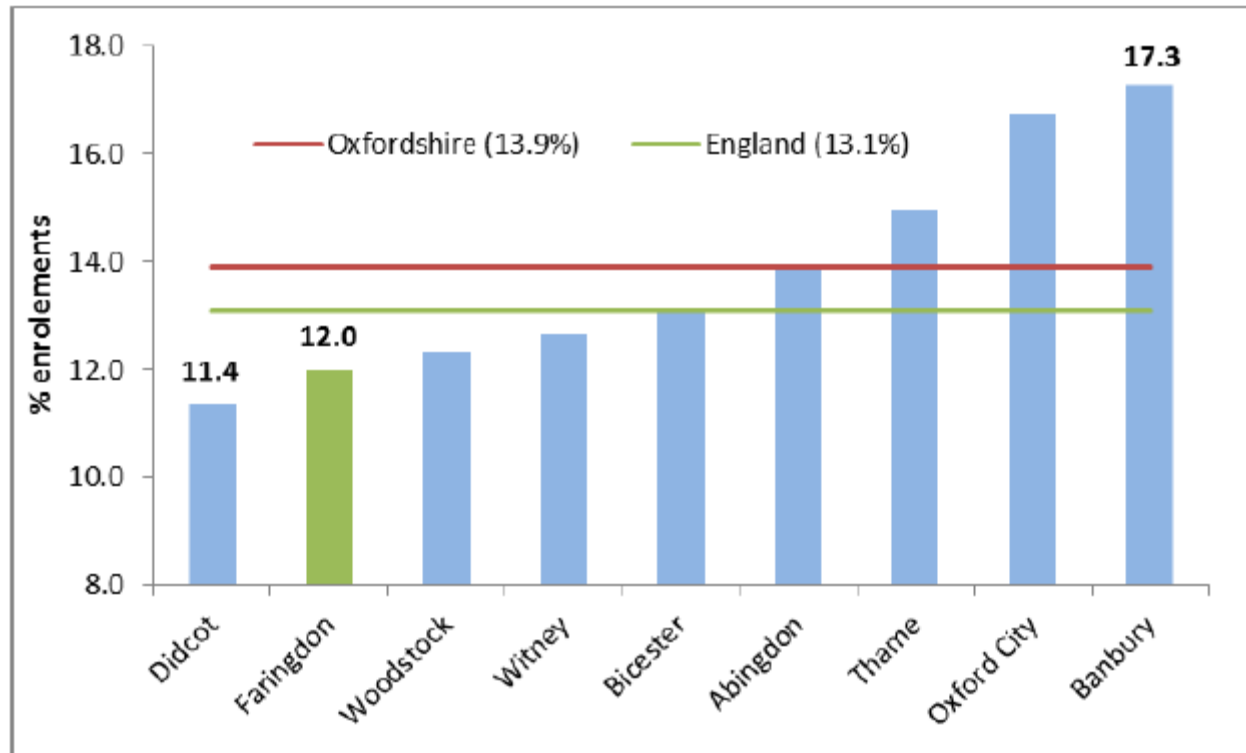
In 2015/16, 280 pupils were classed as persistently absent from primary schools in the Abingdon locality

42 children received a fixed term exclusion

Faringdon & Wantage Locality – School Profile



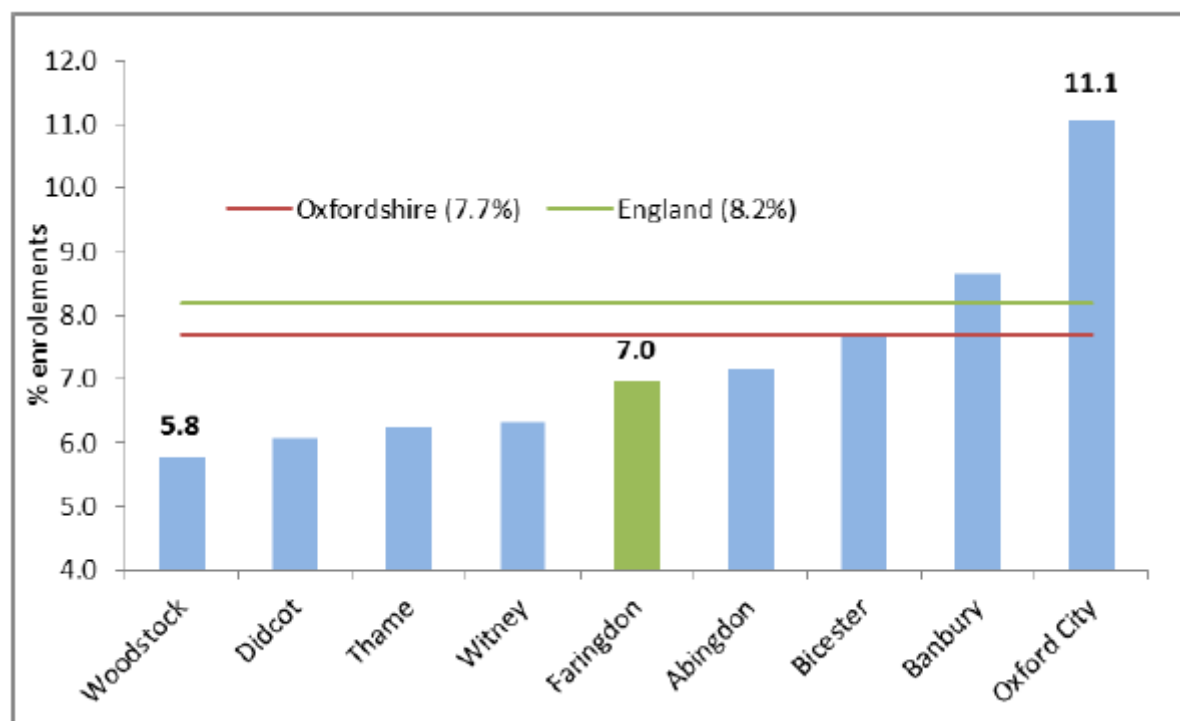
Persistent absence rates (secondary schools) 2015/16



In 2015/16, 305 pupils were classed as persistently absent from secondary schools in the Faringdon & Wantage locality

134 children received a fixed term exclusion from secondary schools in the Faringdon & Wantage locality

Persistent absence rates (primary schools) 2015/16



In 2015/16, 310 pupils were classed as persistently absent from primary schools in the Faringdon & Wantage locality

58 pupils received a fixed term exclusion from primary schools in the Faringdon & Wantage locality