

Mapping Vulnerable Children 2016/17

This work was commissioned by the Performance, Audit & Quality Assurance subgroup of the Safeguarding Board and Children's Trust. It provides an overview of activity across agencies at a local geographical level. Further information on any specific service is available from that service. This work is about identifying the geographical overlap between services.

Maps and charts are reported at ward level on the use of social care; health and police services to identify geographical hotspots and school attendance data is reported by school partnerships. The data on attendance is taken from the School Locality Profiles for 2015/16 academic year.

Index

- [Slides 6-7: Referrals to Social Care by Ward](#)
- [Slides 8-10: Domestic Violence Notifications by Ward](#)
- [Slide 11: CAMHS Referrals by Ward](#)
- [Slides 12-13: Child as Victims of Crime by Ward](#)
- [Slides 14:-16: Activity Levels by Deprivation](#)
- [Slides 17-22: School Profiles](#)

Overview

Oxfordshire

There are clear geographical overlaps e.g. areas of higher incidences of domestic violence notifications tend to have higher levels of social care referrals, and more children are victims of crime. These are also linked to levels of deprivation. There is less of an overlap with referrals to the CAMHS service. Additional work was carried out on children as victims of crime and a quarter of all victims were of school age; and the crime was during the school day in term time.

South Oxfordshire

- Children in South Oxfordshire are less likely to appear in the data than Oxfordshire as a whole.
- However the Didcot wards have particularly high prevalence e.g. children in Didcot South are 4 times more likely to be referred to social care; 5 times more likely to be in a household with a domestic abuse notification and over twice as likely to be a victim of crime than in the district as a whole

South Oxfordshire

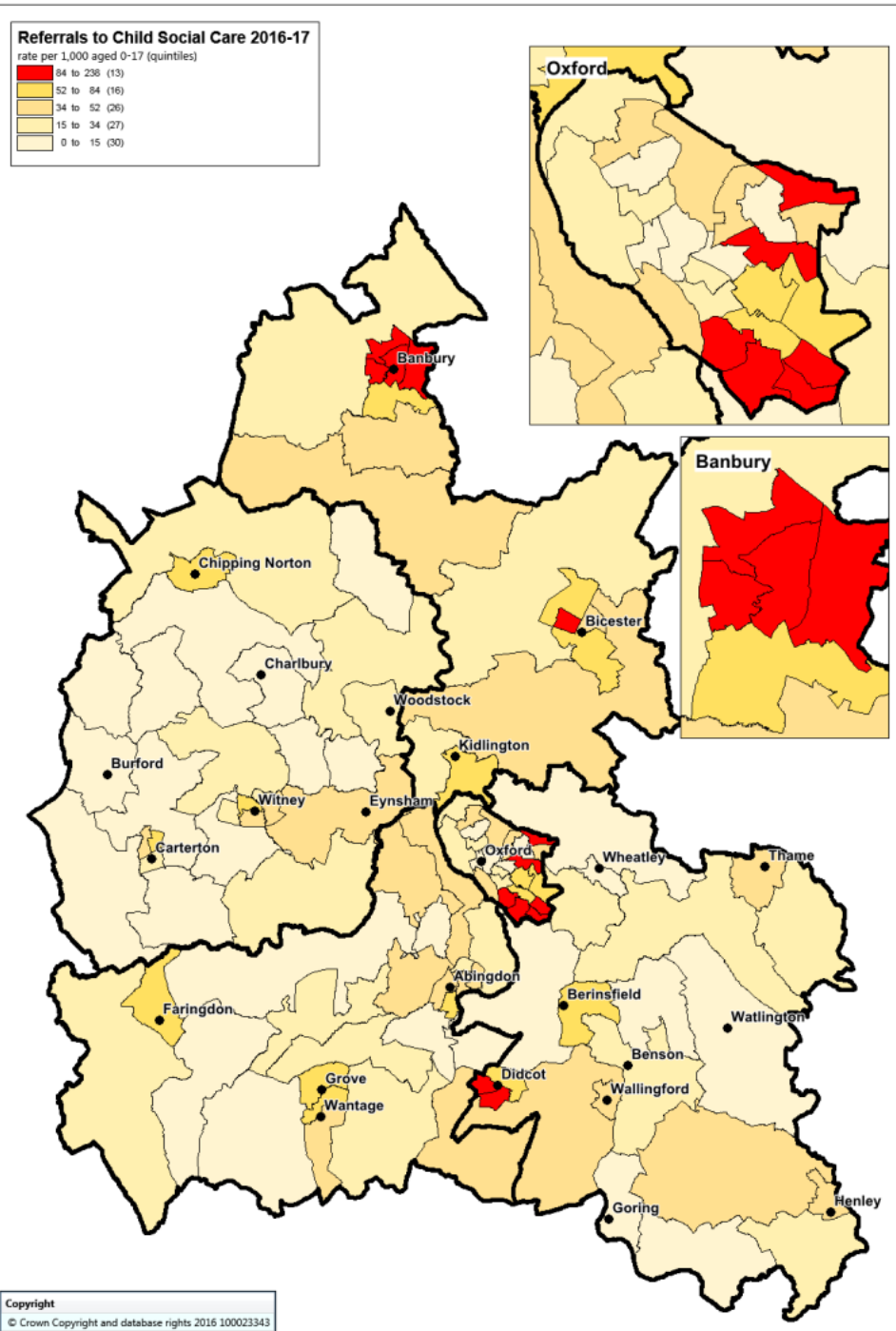
| | Social care referrals | | | DV notification | | | Victims of Crime | | | CAMHS referral | | |
|---------------------------|-----------------------|---------------|-------------|-----------------|---------------|-------------|------------------|---------------|-------------|----------------|---------------|-------------|
| | Rate | Rank District | Rank County | Rate | Rank District | Rank County | Rate | Rank District | Rank County | Rate | Rank District | Rank County |
| Didcot South | 111.6 | 1 | 6 | 71.0 | 1 | 4 | 42.2 | 2 | 18 | 41.9 | 8 | 44 |
| Didcot West | 110.1 | 2 | 7 | 63.2 | 2 | 7 | 95.3 | 1 | 1 | 80.4 | 1 | 1 |
| Didcot North East | 60.1 | 3 | 23 | 42.9 | 3 | 14 | 20.3 | 7 | 58 | 37.3 | 11 | 61 |
| Thame | 49.2 | 6 | 36 | 36.7 | 5 | 25 | 13.5 | 14 | 85 | 40.3 | 9 | 49 |
| Berinsfield | 58.5 | 4 | 25 | 38.3 | 4 | 23 | 15.6 | 11 | 78 | 53.4 | 4 | 16 |
| Wallingford | 47.6 | 7 | 38 | 35.1 | 6 | 28 | 16.1 | 10 | 76 | 42.5 | 7 | 43 |
| Henley-on-Thames | 51.5 | 5 | 30 | 30.4 | 7 | 33 | 16.2 | 9 | 75 | 24.2 | 18 | 94 |
| Cholsey | 39.0 | 8 | 45 | 14.1 | 11 | 71 | 29.8 | 4 | 31 | 44.1 | 5 | 35 |
| Woodcote & Rotherfield | 38.3 | 9 | 47 | 18.7 | 8 | 53 | 11.3 | 16 | 95 | 33.0 | 12 | 76 |
| Chinnor | 28.1 | 10 | 58 | 17.2 | 9 | 61 | 16.7 | 8 | 73 | 38.3 | 10 | 55 |
| Benson & Crowmarsh | 22.6 | 12 | 67 | 17.2 | 9 | 61 | 6.7 | 20 | 108 | 27.7 | 15 | 89 |
| Sonning Common | 25.8 | 11 | 62 | 8.6 | 18 | 89 | 6.6 | 21 | 109 | 20.6 | 21 | 101 |
| Watlington | 14.1 | 16 | 86 | 11.7 | 14 | 78 | 10.1 | 18 | 100 | 26.8 | 16 | 91 |
| Kidmore End & Whitchurch | 14.1 | 16 | 86 | 13.3 | 12 | 73 | 13.5 | 13 | 84 | 23.8 | 20 | 96 |
| Garsington & Horspath | 18.0 | 13 | 76 | 11.7 | 14 | 78 | 32.5 | 3 | 27 | 58.2 | 2 | 7 |
| Forest Hill & Holton | 13.3 | 18 | 88 | 11.7 | 14 | 78 | 15.3 | 12 | 80 | 30.4 | 13 | 86 |
| Chalgrove | 12.5 | 19 | 92 | 12.5 | 13 | 76 | 21.2 | 5 | 52 | 54.7 | 3 | 13 |
| Haseley Brook | 15.6 | 14 | 79 | 8.6 | 18 | 89 | 13.3 | 15 | 87 | 43.0 | 6 | 40 |
| Wheatley | 10.1 | 20 | 100 | 10.9 | 17 | 84 | 20.6 | 6 | 56 | 25.3 | 17 | 93 |
| Sandford & the Wittenhams | 14.8 | 15 | 83 | 3.1 | 20 | 106 | 10.6 | 17 | 98 | 23.9 | 19 | 95 |
| Goring | 7.8 | 21 | 104 | 0.8 | 21 | 110 | 9.6 | 19 | 101 | 28.8 | 14 | 88 |
| Median | 25.8 | | | 14.1 | | | 15.6 | | | 37.3 | | |
| County Median | 30.1 | | | 18.7 | | | 20.5 | | | 37.9 | | |

These figures show by ward in South Oxfordshire the rate of social care referrals, domestic violence notifications, children as victims of crime and referrals to the CAMHS service. The wards are then ranked, with highest rates first against the other wards in the district (16) and then by the other wards in the county.

Analysis of..

- a) Data on children known to Oxfordshire County Council (matched at postcode level, 2016-17)
 - Referrals to Children's services
 - Children in household with police notification of domestic abuse
- b) Data from Thames Valley Police: child victims (at postcode level), April 15 to Dec16
- c) Data from Oxford Health: CAMHS referrals by ward (2016-17)
- d) Links between vulnerability and deprivation across Oxfordshire
- e) Persistent absence rates for 2015/16 academic year by locality

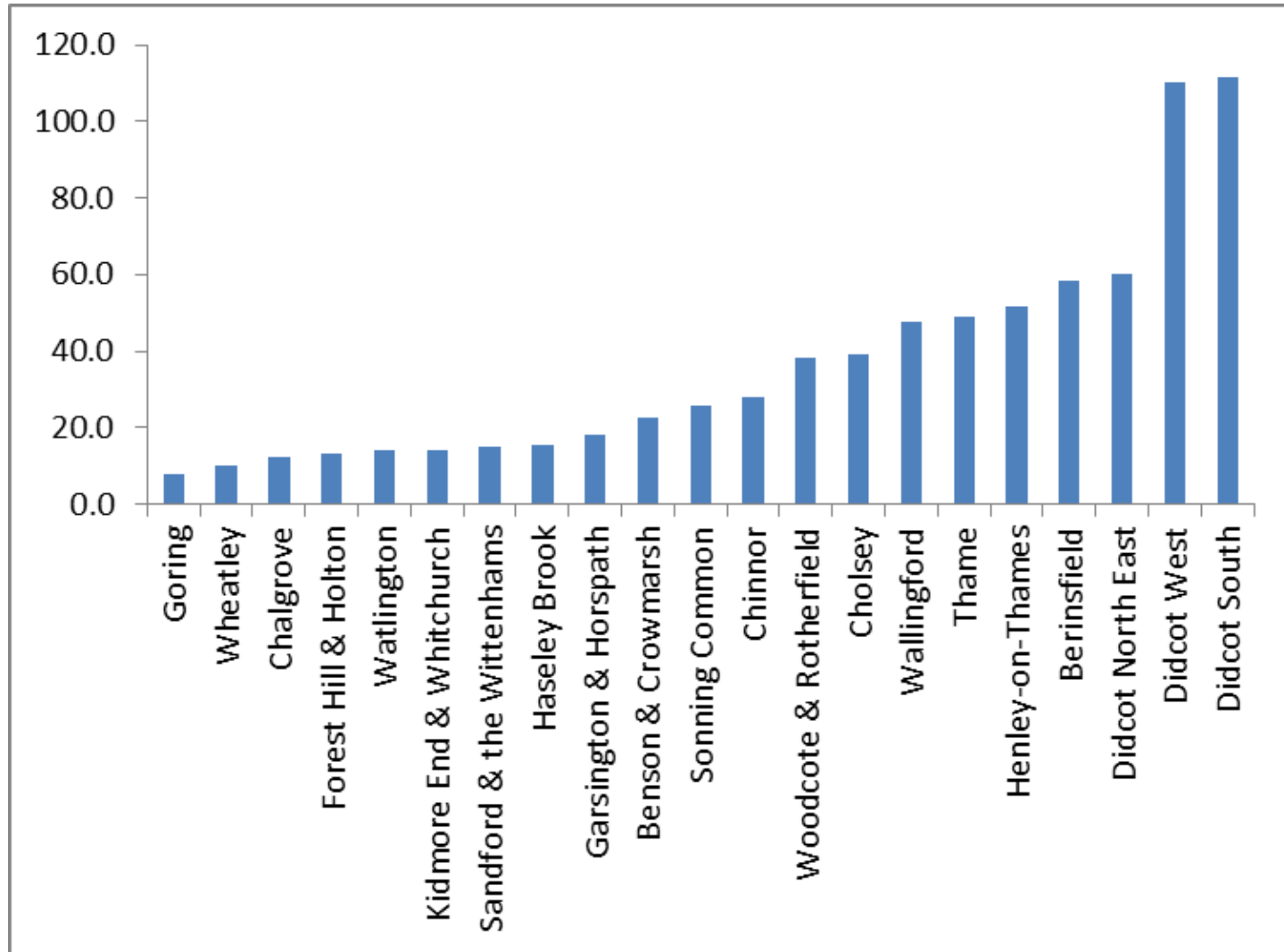
Referrals to Child Social Care 2016-17



Wards in top quintile

| District | Ward | Count | Rate per 1,000 aged 0-17 |
|------------|--------------------------------|-------|--------------------------|
| Cherwell | Banbury Ruscote | 304 | 237.3 |
| | Banbury Grimsbury and Hightown | 156 | 121.8 |
| | Banbury Cross and Neithrop | 154 | 120.2 |
| | Bicester West | 133 | 103.8 |
| | Banbury Hardwick | 108 | 84.3 |
| Oxford | Blackbird Leys | 172 | 134.3 |
| | Barton and Sandhills | 157 | 122.6 |
| | Northfield Brook | 140 | 109.3 |
| | Churchill | 138 | 107.7 |
| | Littlemore | 134 | 104.6 |
| | Rose Hill and Iffley | 114 | 89.0 |
| | Didcot South | 143 | 111.6 |
| South Oxon | Didcot West | 141 | 110.1 |

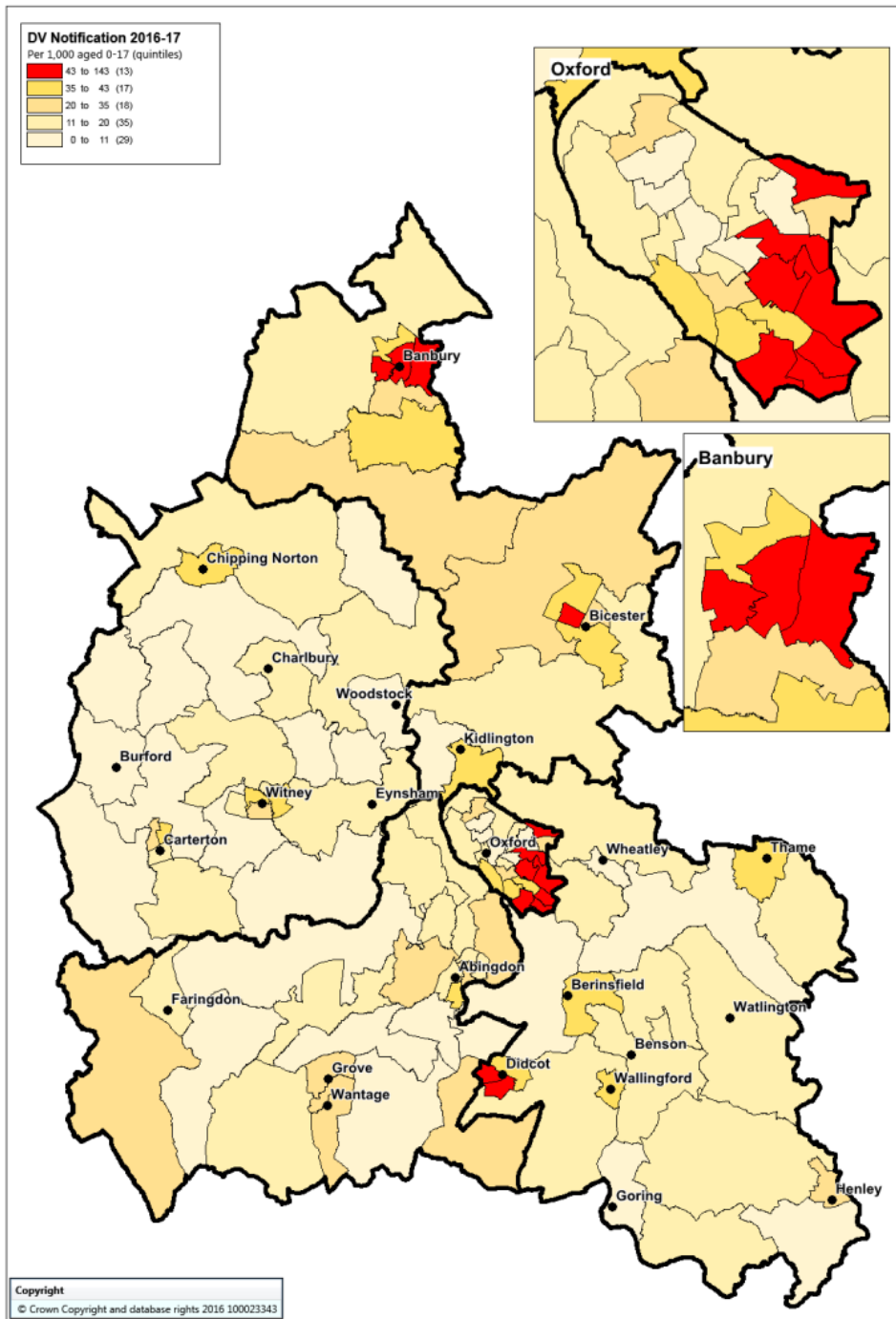
Referrals to social care per 1,000 people aged 0-17



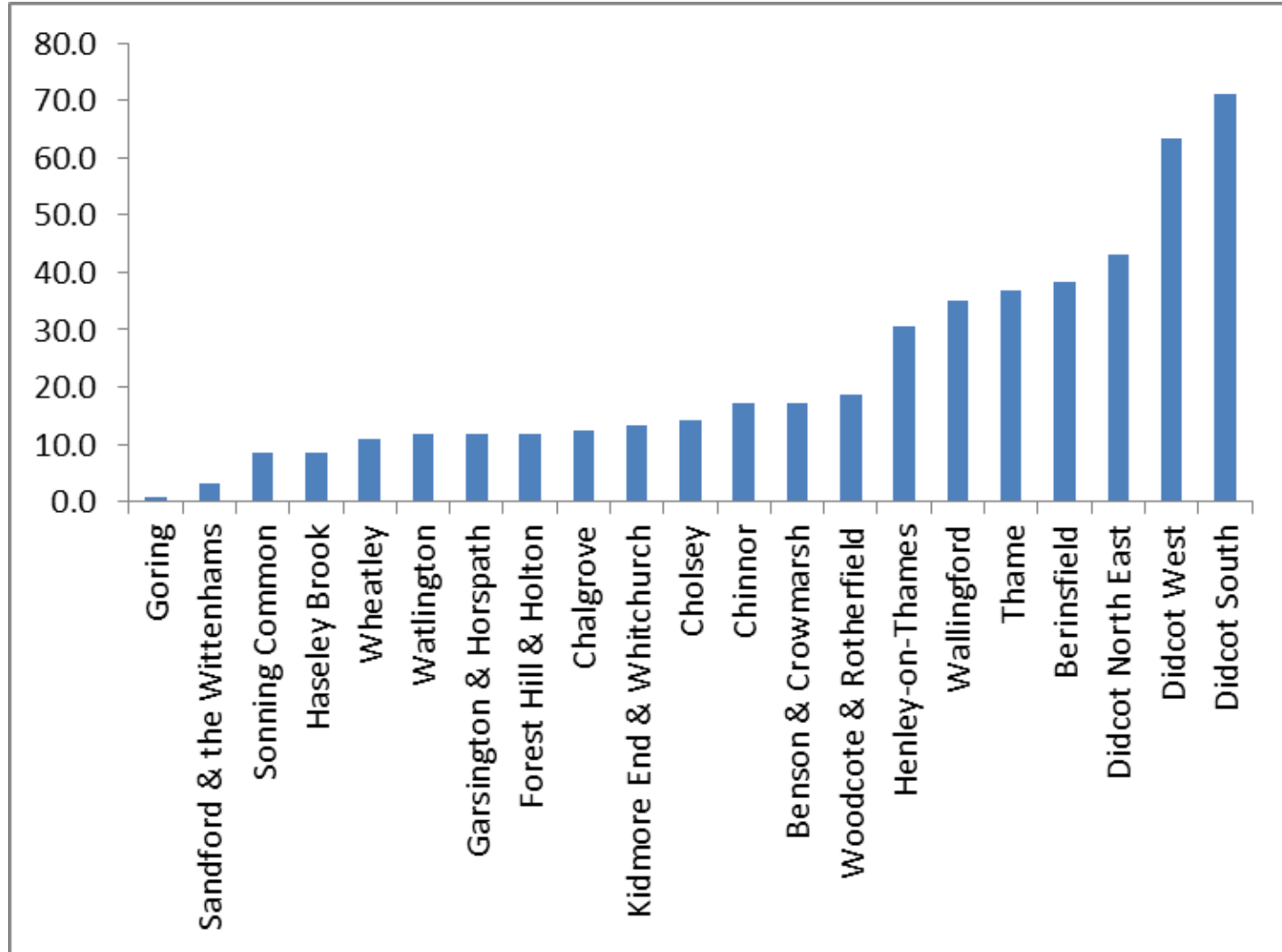
Domestic Violence notification with children 2016-17

Wards in top quintile

| District | Ward | Count | Rate per 1,000 aged 0-17 | |
|----------|--------------------------------|--------------|--------------------------|------|
| Cherwell | Banbury Ruscote | 182 | 142.1 | |
| | Banbury Grimsbury and Hightown | 92 | 71.8 | |
| | Bicester West | 92 | 71.8 | |
| Oxford | Banbury Cross and Neithrop | 78 | 60.9 | |
| | Barton and Sandhills | 85 | 66.4 | |
| | Northfield Brook | 84 | 65.6 | |
| | Blackbird Leys | 72 | 56.2 | |
| | Lye Valley | 65 | 50.7 | |
| | Littlemore | 63 | 49.2 | |
| | Churchill | 62 | 48.4 | |
| | Cowley Marsh | 62 | 48.4 | |
| | South Oxfor | Didcot South | 91 | 71.0 |
| | | Didcot West | 81 | 63.2 |



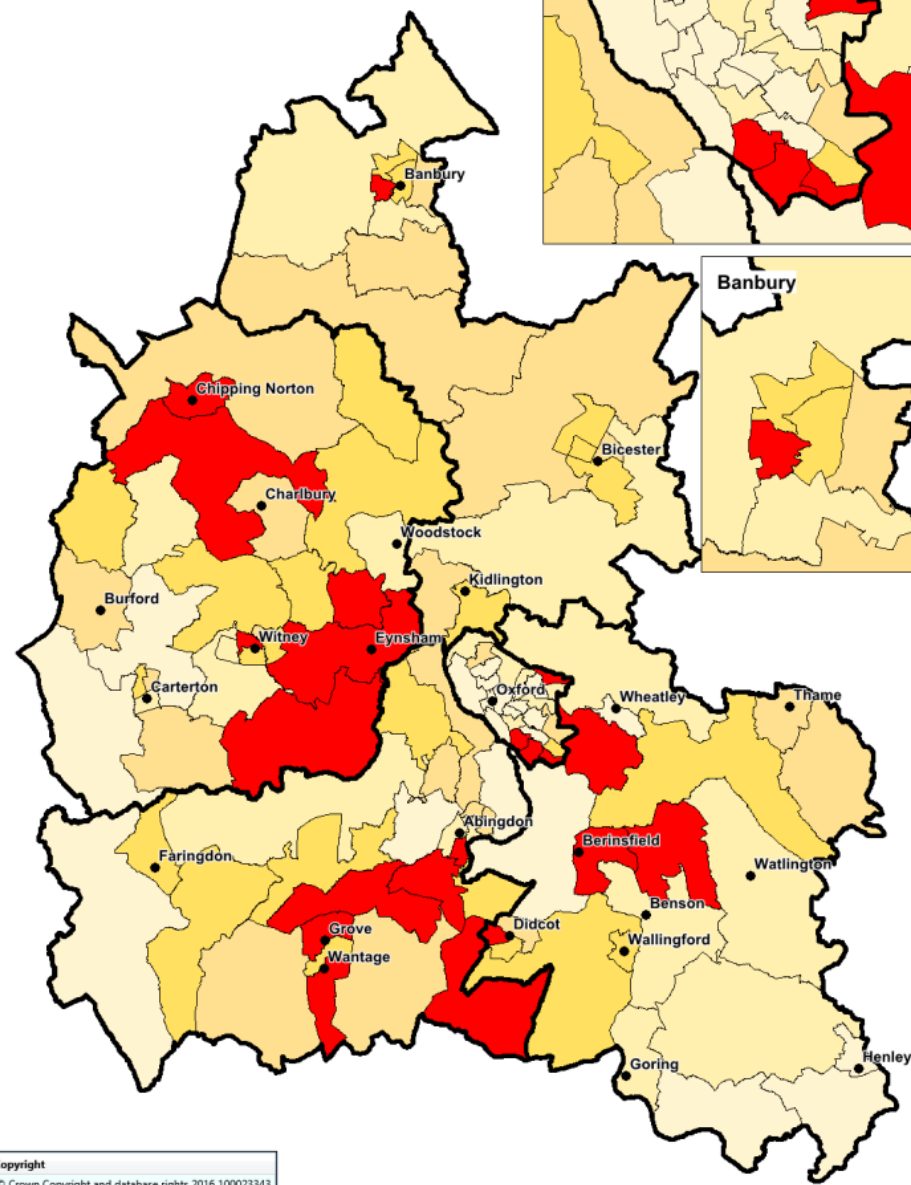
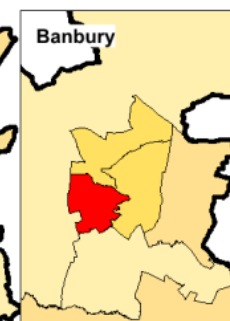
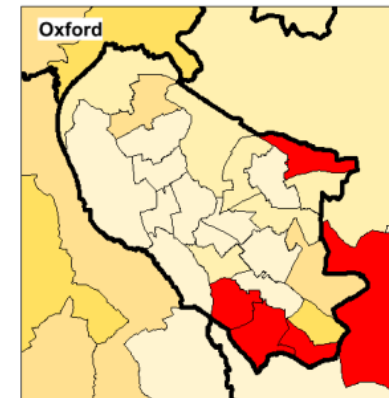
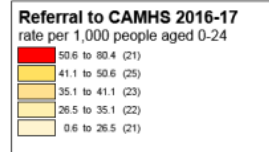
Domestic Violence Notifications 1000 people aged 0-17



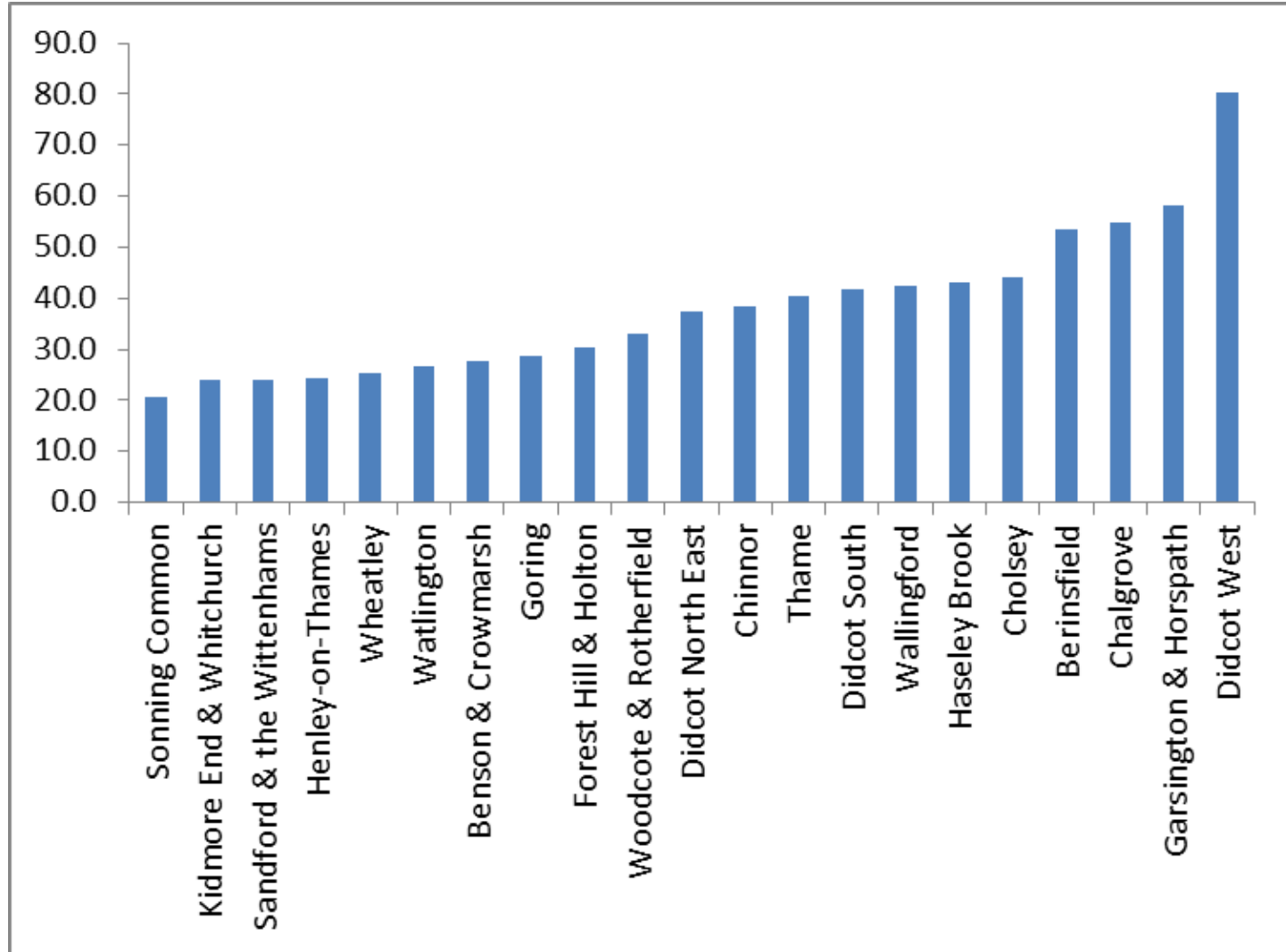
Referrals to Oxford Health CAMHS 2016-17

Wards in top quintile

| District | Ward | Count | Rate per 1,000 aged 0-24 |
|------------|-------------------------------------|-------------|--------------------------|
| Cherwell | Banbury Ruscote | 255 | 66.8 |
| Oxford | Rose Hill and Iffley | 121 | 57.9 |
| | Barton and Sandhills | 142 | 55.0 |
| | Northfield Brook | 155 | 54.3 |
| | Littlemore | 100 | 52.2 |
| | South Oxon | Didcot West | 118 |
| Vale of WH | Garsington & Horspath | 51 | 58.2 |
| | Chalgrove | 54 | 54.7 |
| | Berinsfield | 68 | 53.4 |
| | Blewbury & Harwell | 99 | 76.2 |
| | Grove North | 92 | 57.4 |
| West Oxon | Wantage Charlton | 102 | 56.0 |
| | Abingdon Caldecott | 120 | 54.2 |
| | Drayton | 46 | 53.2 |
| | Steventon & the Hanneys | 36 | 52.7 |
| | Witney Central | 93 | 62.0 |
| West Oxon | Chadlington and Churchill | 29 | 59.2 |
| | Freeland and Hanborough | 63 | 58.9 |
| | Standlake, Aston and Stanton Harcol | 65 | 55.6 |
| | Eynsham and Cassington | 78 | 52.4 |
| | Chipping Norton | 89 | 51.2 |



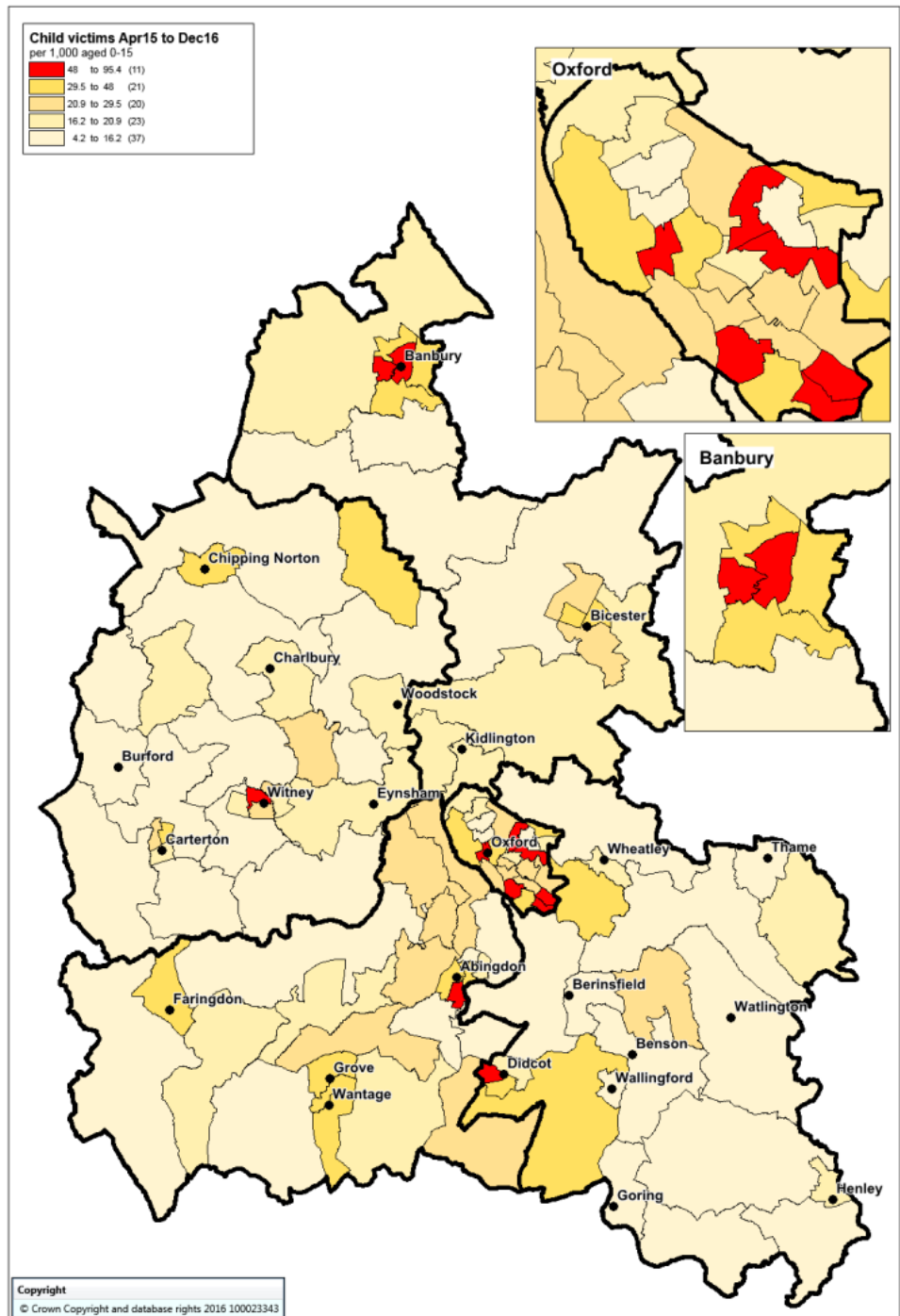
Referrals to CAMHS per 1000 people 0-24



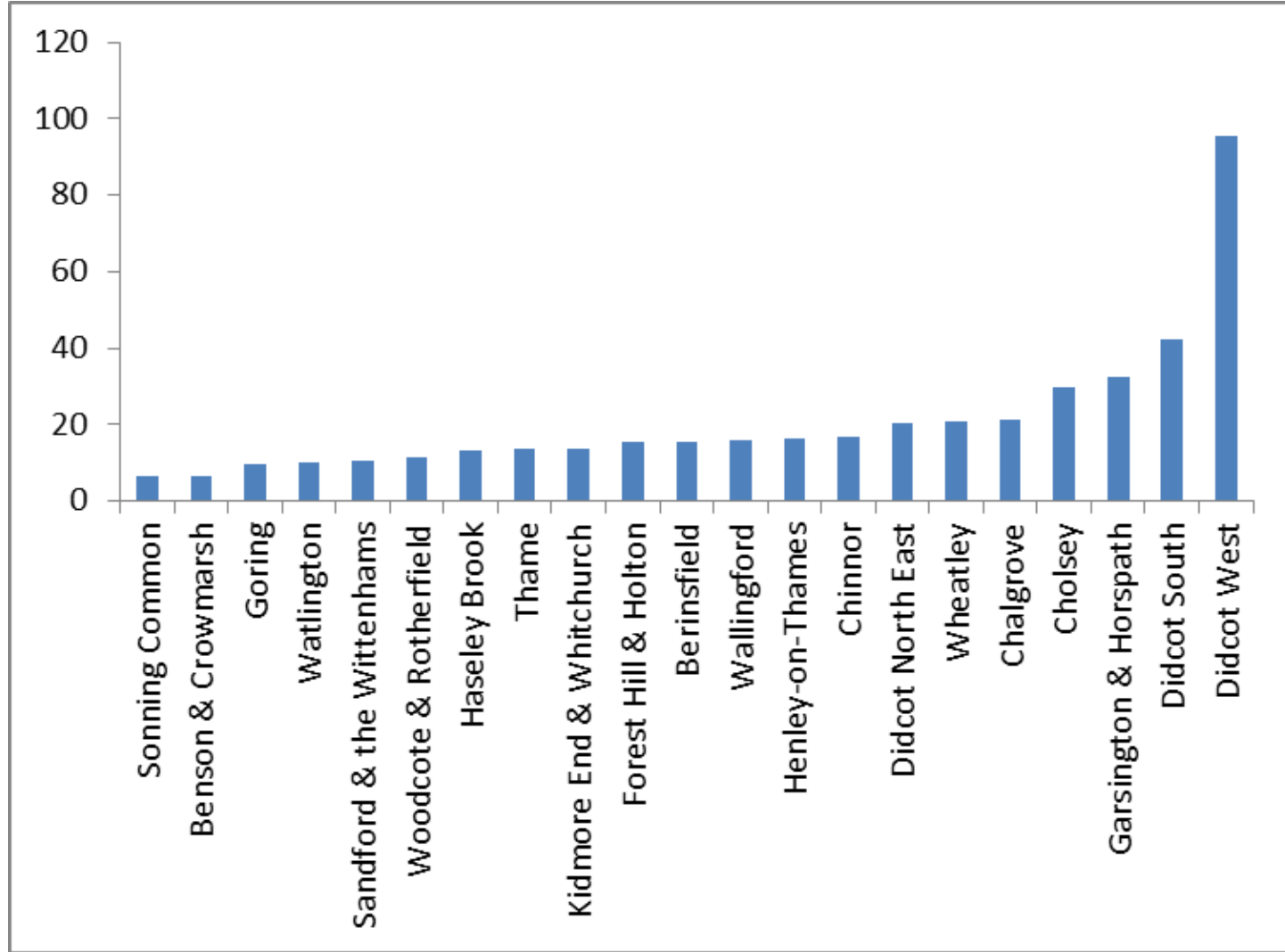
Child victims of crime

Wards in top quintile

| District | Ward | Count | rate per 1,000 aged 0-15 |
|------------|-----------------------------|-------------|--------------------------|
| Cherwell | Banbury Ruscote | 203 | 78.4 |
| | Banbury Cross and Neithrop | 112 | 64.3 |
| Oxford | Northfield Brook | 121 | 60.5 |
| | Churchill | 64 | 58.2 |
| | Headington Hill and Northwa | 58 | 57.2 |
| | Blackbird Leys | 83 | 54.2 |
| | Carfax | 10 | 53.5 |
| | Rose Hill and Iffley | 70 | 49.3 |
| | South Oxon | Didcot West | 92 |
| Vale of WH | Abingdon Caldecott | 76 | 50.8 |
| West Oxon | Witney Central | 49 | 50.6 |

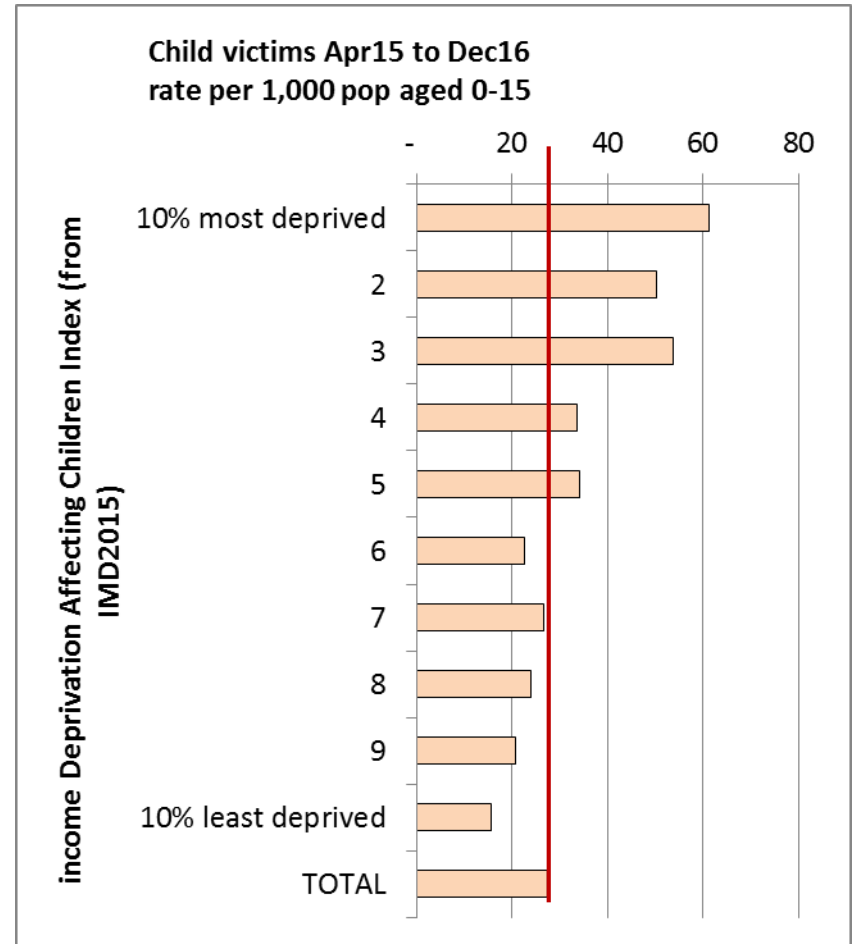
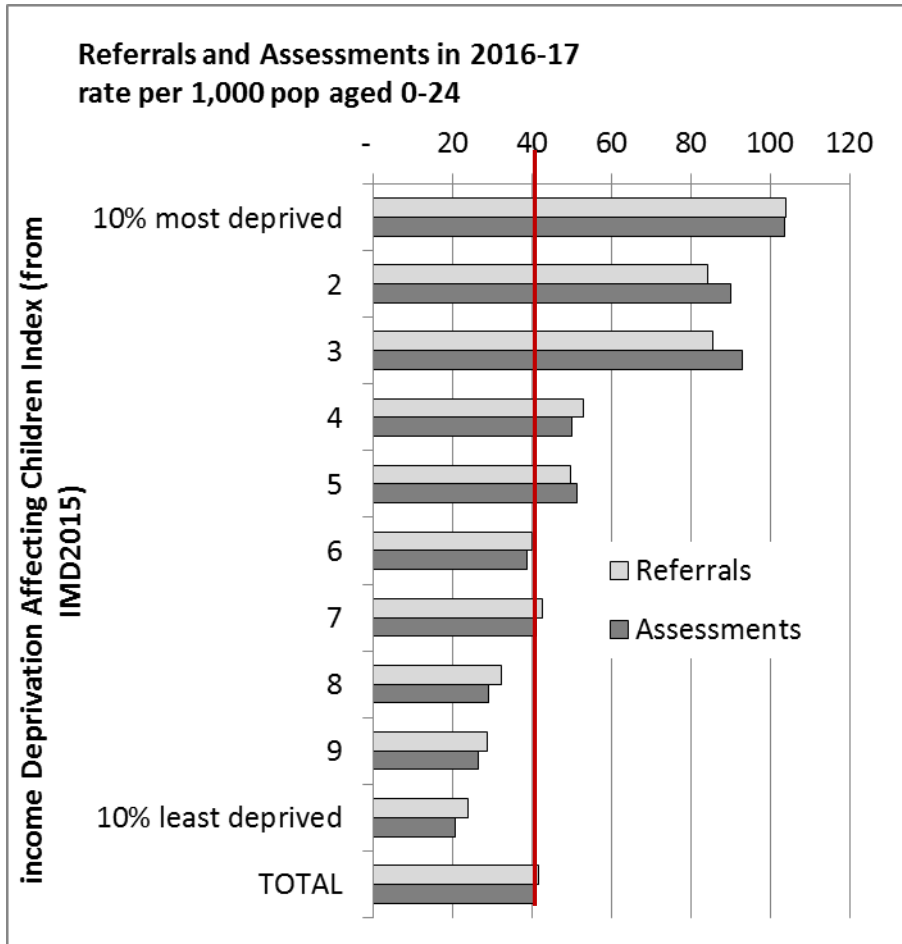


Child victims of Crime per 1000 people 0-17



ANALYSIS BY INCOME DEPRIVATION AFFECTING CHILDREN

Vulnerable children data mapped to most vs least deprived areas on child poverty (income deprivation affecting children index 2015)

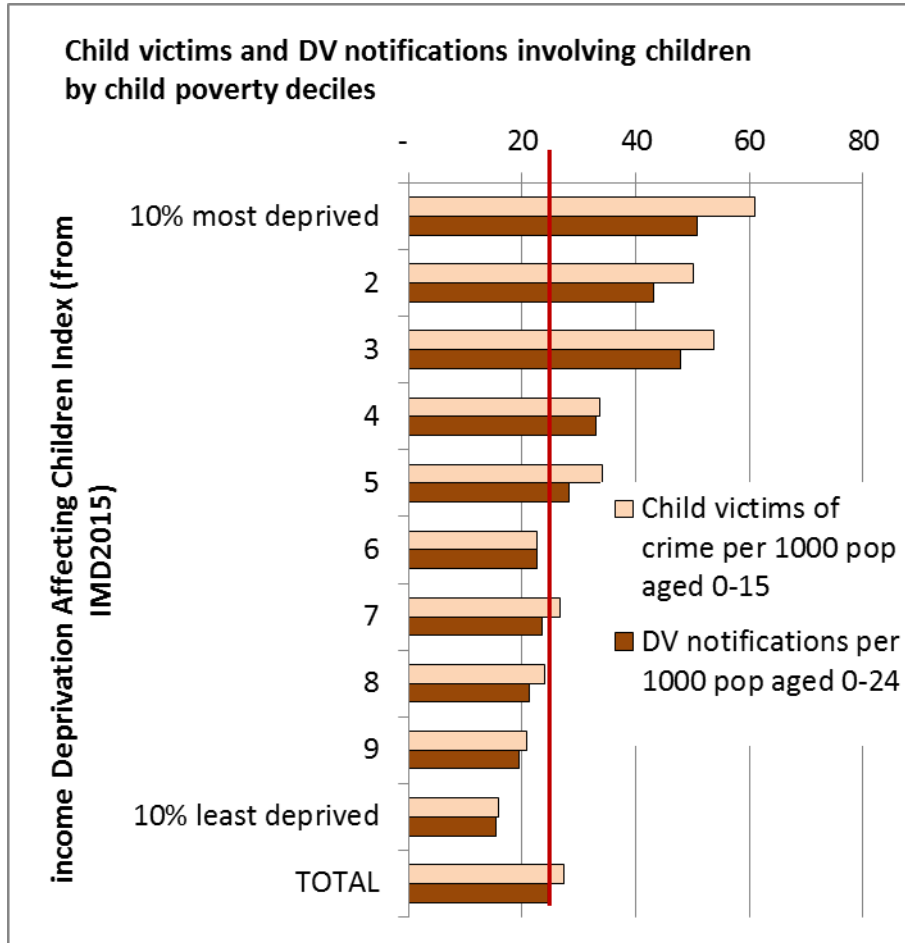


Oxfordshire County Council
5,903 child referral postcodes, 5,740 child assessment postcodes mapped

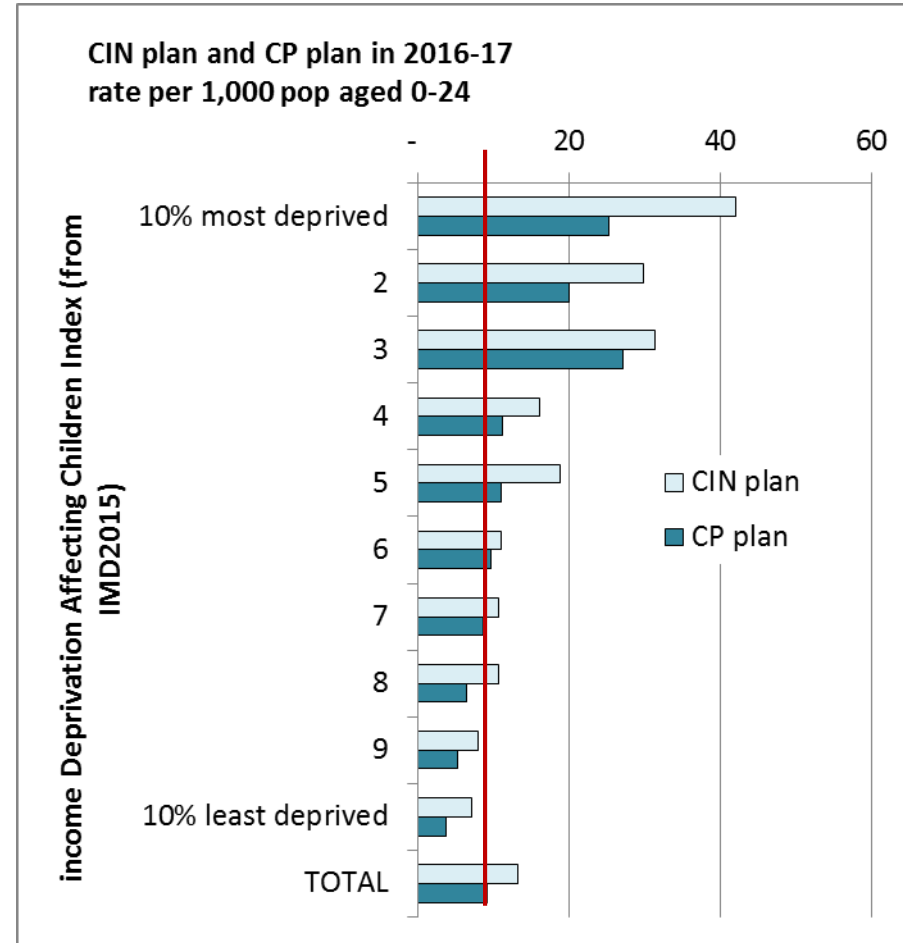
Thames Valley Police
3,348 child victim postcodes mapped

Vulnerable children data mapped to most vs least deprived areas on child poverty

(income deprivation affecting children index 2015)

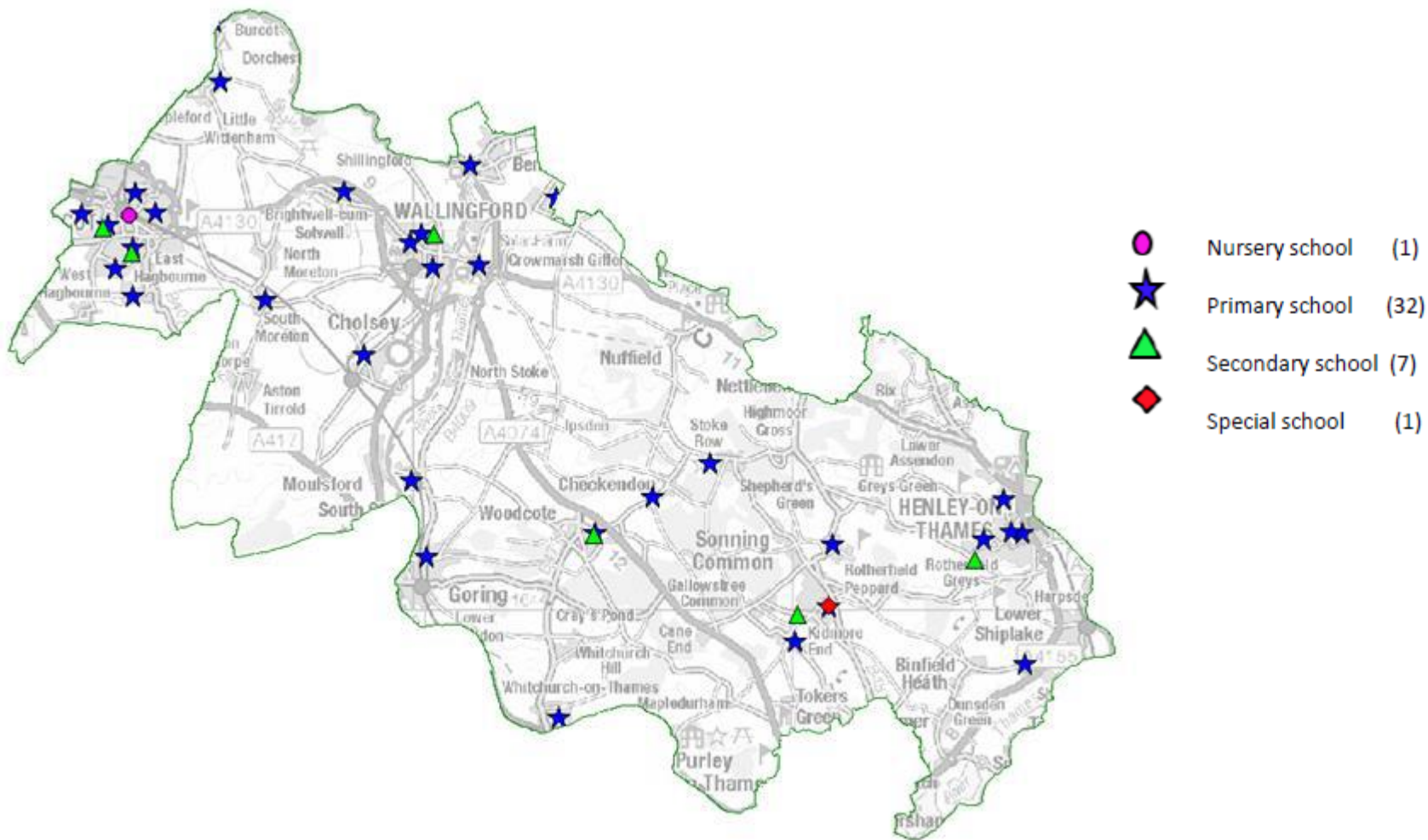


Thames Valley Police
 3,493 DV notification involving children postcodes mapped
 3,348 child victims postcodes mapped

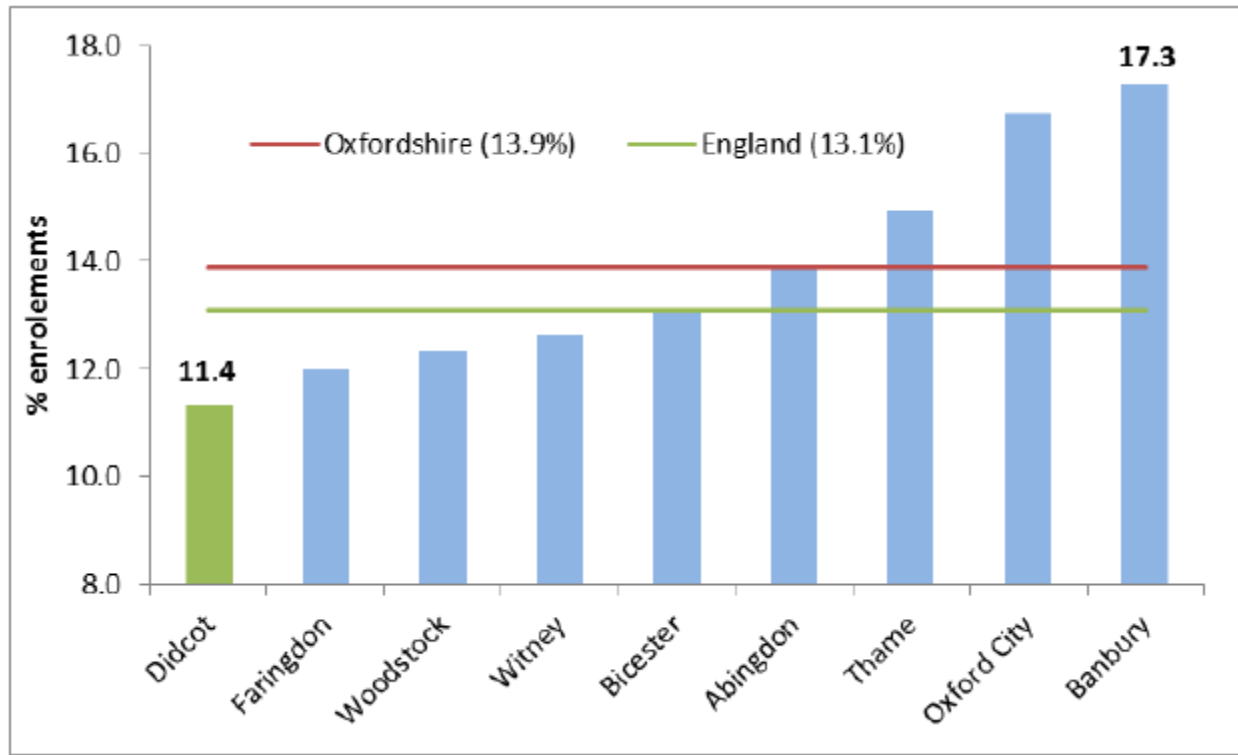


Oxfordshire County Council
 1,877 Children in Need Plan postcodes mapped
 1,302 Child Protection postcodes mapped

Didcot, Wallingford & Henley Locality – School Profile



Persistent absence rates (secondary schools) 2015/16



In 2015/16, 560 pupils were classed as persistently absent from secondary schools in the Didcot, Wallingford and Henley locality

534 pupils received a fixed term exclusion from secondary schools in the Didcot, Wallingford and Henley locality

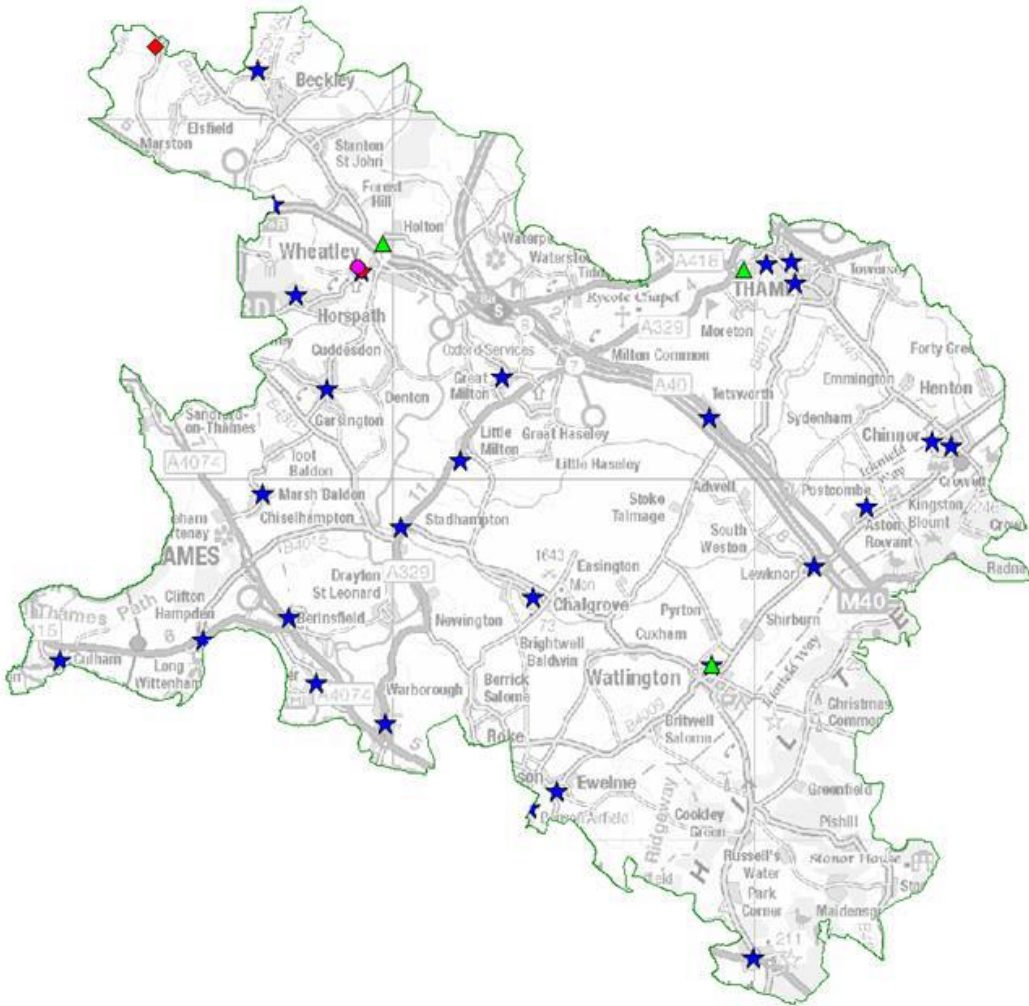
Persistent absence rates (primary schools) 2015/16








In 2015/16, 354 pupils were classed as persistently absent from primary schools in the Didcot, Wallingford and Henley locality

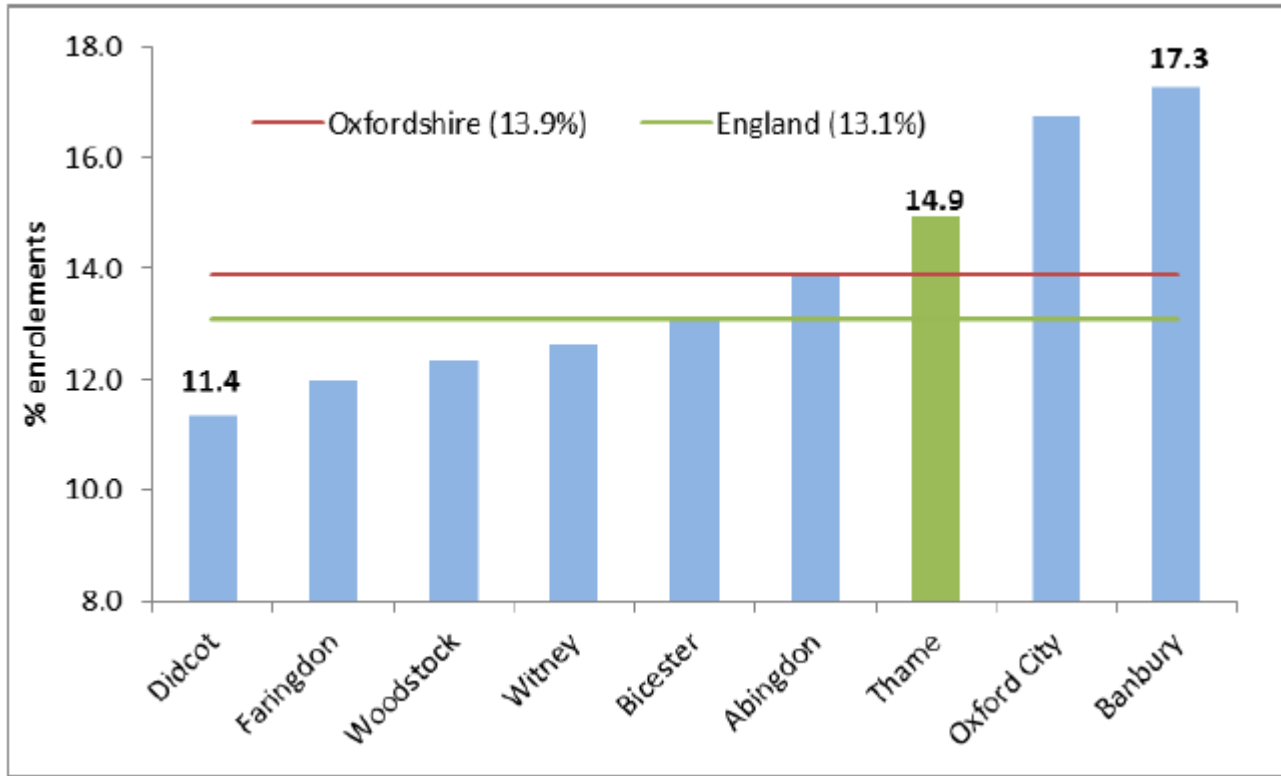
66 pupils received a fixed term exclusion from secondary schools in the Didcot, Wallingford and Henley locality

Thame, Watlington & Berinsfield Locality – School Profile



-  Nursery school (1)
-  Primary school (25)
-  Secondary school (3)
-  Special school (2)
-  All Through School (1)

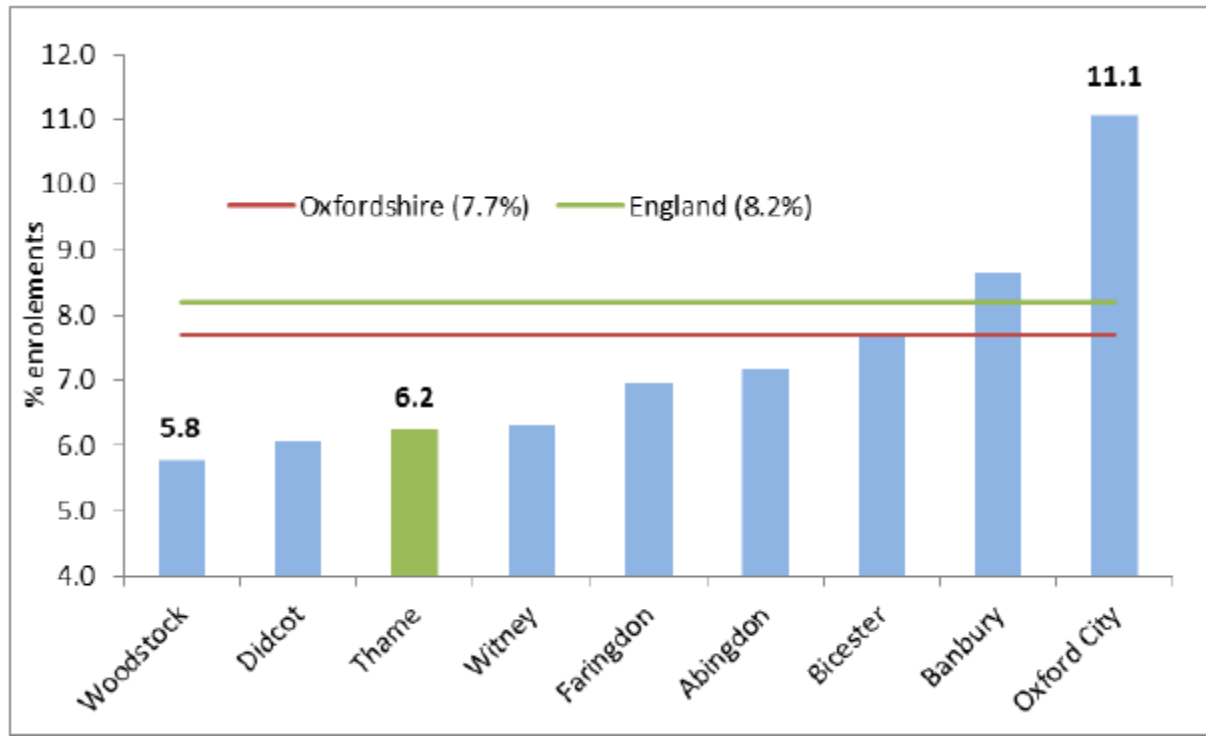
Persistent absence rates (secondary schools) 2015/16



In 2015/16, 460 pupils were classed as persistently absent from secondary schools in the Thame locality

265 pupils received a fixed term exclusion from secondary schools in the Thame locality

Persistent absence rates (primary schools) 2015/16



In 2015/16, 225 pupils were classed as persistently absent from primary schools in the Thame locality

8 pupils received a fixed term exclusion from secondary schools in the Thame locality