

# Mapping Vulnerable Children 2016/17

This work was commissioned by the Performance, Audit & Quality Assurance subgroup of the Safeguarding Board and Children's Trust. It provides an overview of activity across agencies at a local geographical level. Further information on any specific service is available from that service. This work is about identifying the geographical overlap between services.

Maps and charts are reported at ward level on the use of social care; health and police services to identify geographical hotspots and school attendance data is reported by school partnerships. The data on attendance is taken from the School Locality Profiles for 2015/16 academic year.

# Index

[Slides 5-6: Referrals to Social Care 1/4/2016 to 31/3/2017 by ward](#)

[Slides 7-8: Domestic Violence notification 1/4/2016 to 31/3/2017 by ward](#)

[Slides 9-10: CAMHS referrals 1/4/2016 to 31/3/2017 by ward](#)

[Slides 11-12: Children as victims of crime 1/4/2015 to 31/12/16 by ward](#)

[Slides 13-15: Activity levels by deprivation](#)

[Slide 16-18: Banbury Locality – School Profile](#)

[Slides 19-21: Bicester Locality - school profile](#)

# Overview

## Oxfordshire

There are clear geographical overlaps e.g. areas of higher incidences of domestic violence notifications tend to have higher levels of social care referrals, and more children are victims of crime. These are also linked to levels of deprivation. There is less of an overlap with referrals to the CAMHS service. Additional work was carried out on children as victims of crime and a quarter of all victims were of school age; and the crime was during the school day in term time.

## Cherwell

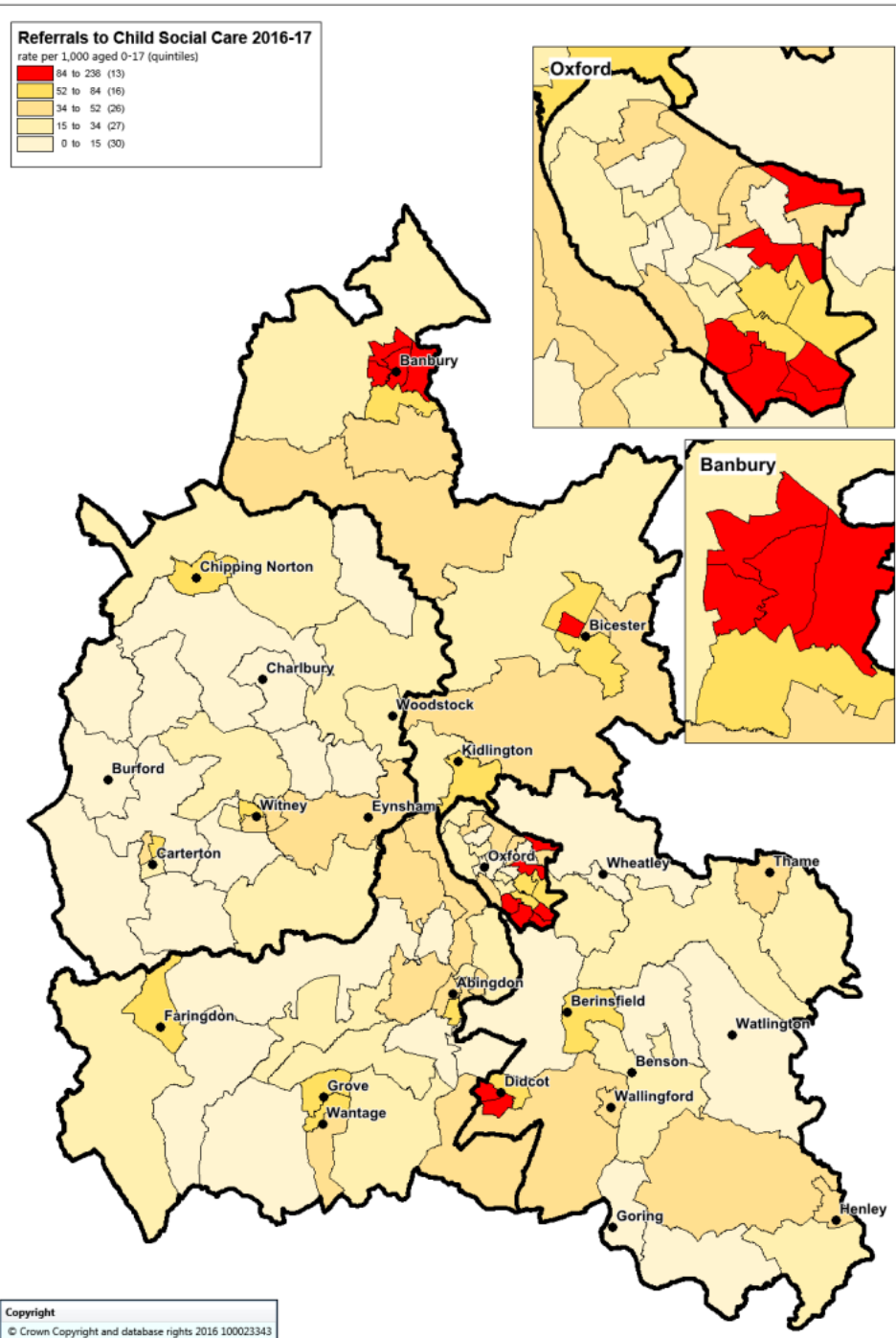
- Children in Cherwell are more likely to appear in the data than Oxfordshire as a whole.
- The wards that comprise Banbury have particularly high rates.

# Cherwell

	Social care referrals			DV notification			Victims of Crime			CAMHS referral		
	Rate	Rank District	Rank County	Rate	Rank District	Rank County	Rate	Rank District	Rank County	Rate	Rank District	Rank County
Banbury Ruscote	237.3	1	1	142.1	1	1	78.4	1	2	66.8	1	3
Banbury Cross and Neithrop	120.2	3	5	60.9	4	8	64.3	2	3	50.1	2	24
Banbury Grimsbury and Hightown	121.8	2	4	71.8	2	2	43.6	4	16	41.1	8	47
Bicester West	103.8	4	11	71.8	2	2	48.0	3	12	45.8	4	30
Banbury Hardwick	84.3	5	13	38.3	8	23	39.3	6	20	43.6	5	39
Bicester South and Ambrosden	72.6	6	15	42.2	6	16	21.9	8	47	46.7	3	28
Bicester North and Caversfield	64.8	7	21	39.0	7	20	21.4	9	50	41.1	7	46
Kidlington East	55.4	8	27	42.9	5	14	16.8	11	69	42.9	6	41
Banbury Calthorpe and Easington	55.4	8	27	28.1	12	36	42.7	5	17	33.7	14	73
Adderbury, Bloxham and Bodicote	40.6	12	42	35.1	9	28	14.6	14	81	38.7	10	54
Deddington	42.2	11	41	32.8	10	31	11.8	15	92	39.7	9	50
Bicester East	49.2	10	36	27.3	13	38	35.9	7	24	37.8	11	57
Launton and Otmoor	39.8	13	43	18.0	14	58	16.7	12	71	27.0	16	90
Fringford and Heyfords	29.7	14	57	29.7	11	34	10.5	16	99	36.7	12	62
Kidlington West	27.3	15	60	10.9	16	84	20.3	10	57	35.1	13	69
Cropredy, Sibfords and Wroxton	22.6	16	67	14.8	15	69	16.6	13	74	30.7	15	85
<b>Median</b>	55.4			36.7			21.7			40.4		
<b>County Median</b>	30.1			18.7			20.5			37.9		

These figures show by ward in Cherwell the rate of social care referrals, domestic violence notifications, children as victims of crime and referrals to the CAMHS service. The wards are then ranked, with highest rates first against the other wards in the district (16) and then by the other wards in the county. In Banbury Ruscote there were 237 social care referrals per 10,000 children. This was the most of any ward in Cherwell and Oxfordshire

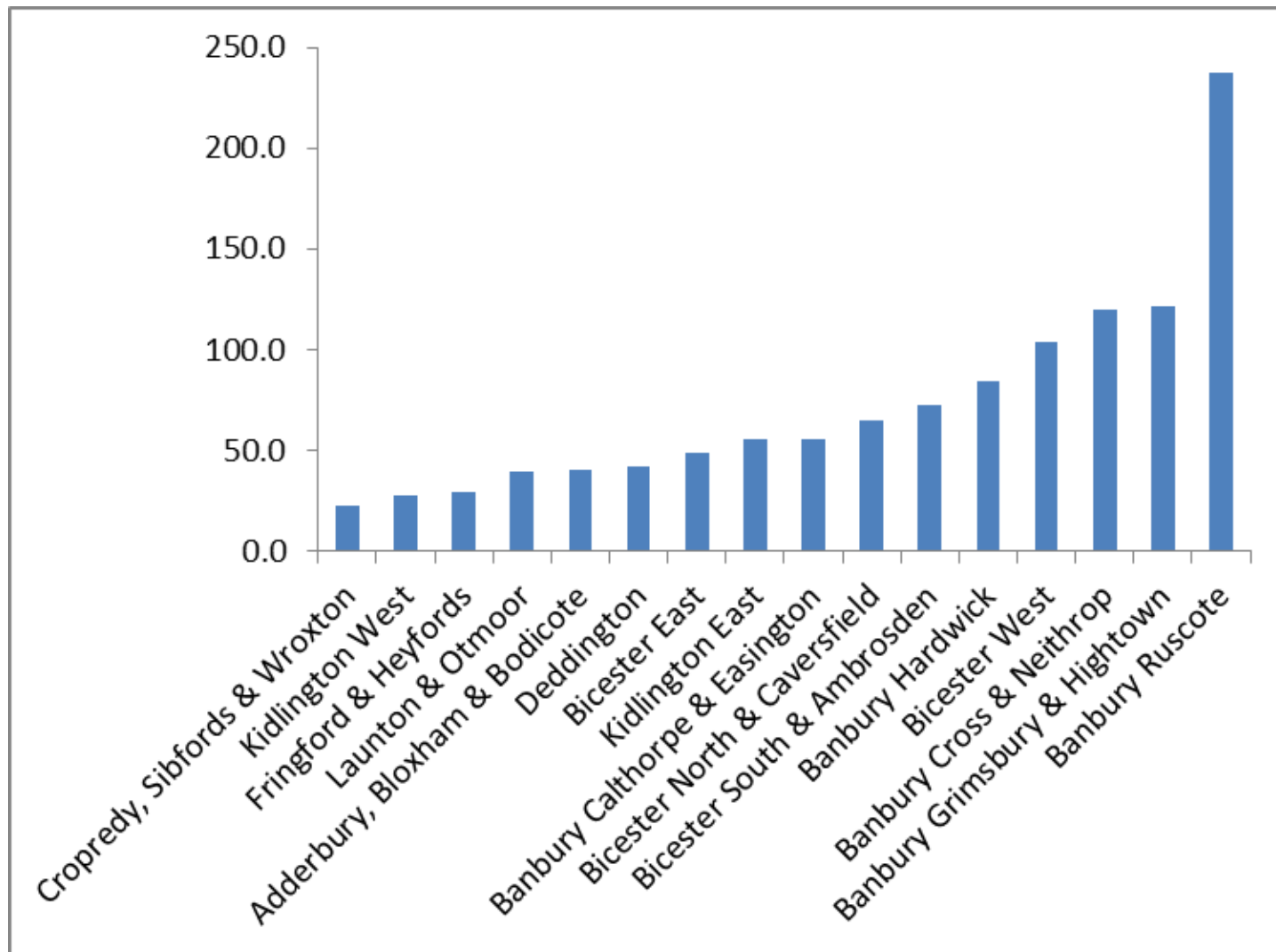
# Ward Map: Referrals to Social Care 1/4/16 to 31/3/2017



## Wards in top quintile

District	Ward	Count	Rate per 1,000 aged 0-17
Cherwell	Banbury Ruscote	304	237.3
	Banbury Grimsbury and Hightown	156	121.8
	Banbury Cross and Neithrop	154	120.2
	Bicester West	133	103.8
Oxford	Banbury Hardwick	108	84.3
	Blackbird Leys	172	134.3
	Barton and Sandhills	157	122.6
	Northfield Brook	140	109.3
	Churchill	138	107.7
	Littlemore	134	104.6
	Rose Hill and Iffley	114	89.0
	Didcot South	143	111.6
South Oxon	Didcot West	141	110.1

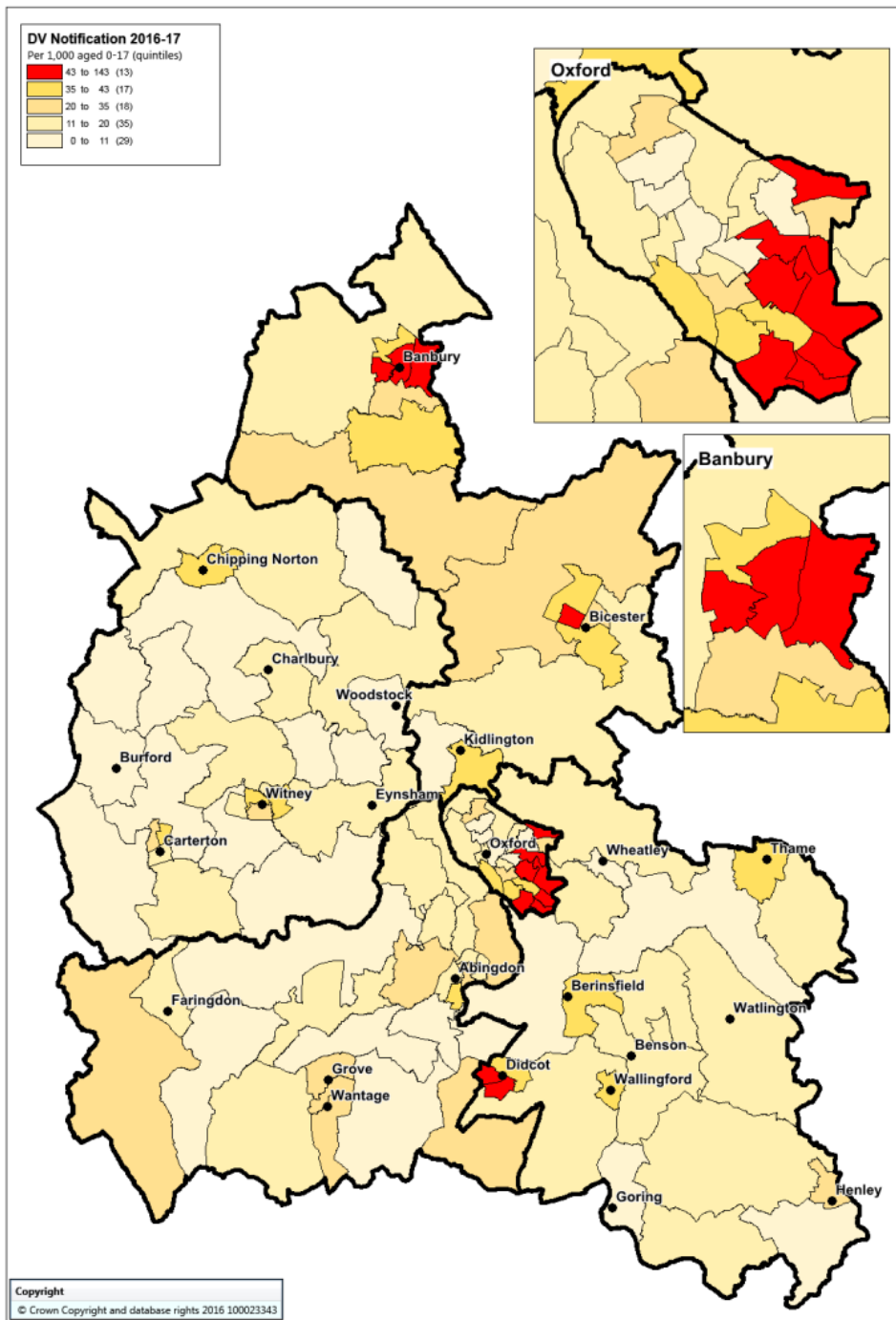
# Referrals to Children's Social Care per 1,000 people aged 0-17 April 1, 2016 to March 31, 2017



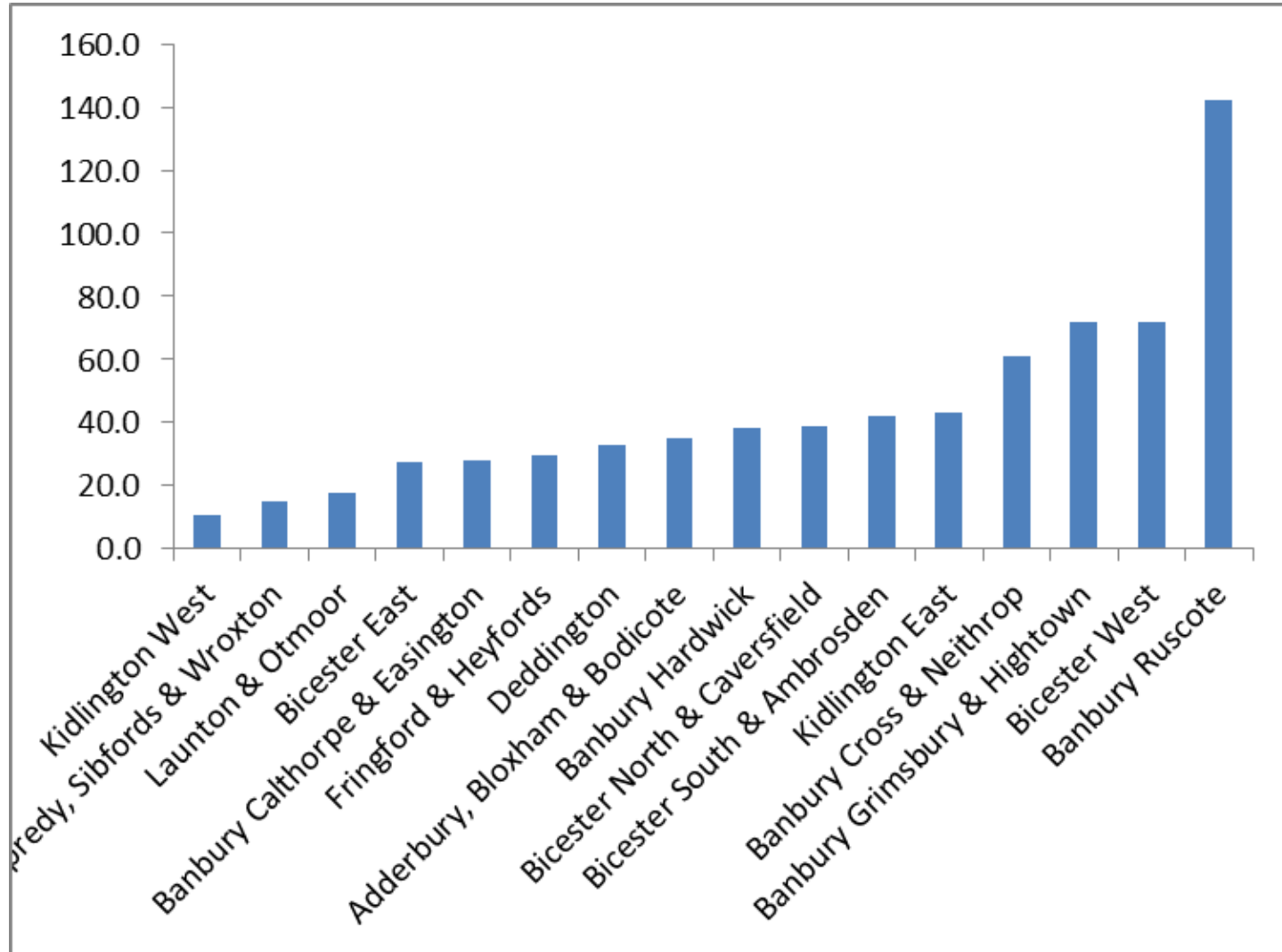
# Domestic Violence notification with children 2016-17

## Wards in top quintile

District	Ward	Count	Rate per 1,000 aged 0-17	
Cherwell	Banbury Ruscote	182	142.1	
	Banbury Grimsbury and Hightown	92	71.8	
	Bicester West	92	71.8	
Oxford	Banbury Cross and Neithrop	78	60.9	
	Barton and Sandhills	85	66.4	
	Northfield Brook	84	65.6	
	Blackbird Leys	72	56.2	
	Lye Valley	65	50.7	
	Littlemore	63	49.2	
	Churchill	62	48.4	
	Cowley Marsh	62	48.4	
	South Oxfor	Didcot South	91	71.0
		Didcot West	81	63.2



# Domestic Violence Notifications 1000 people aged 0-17

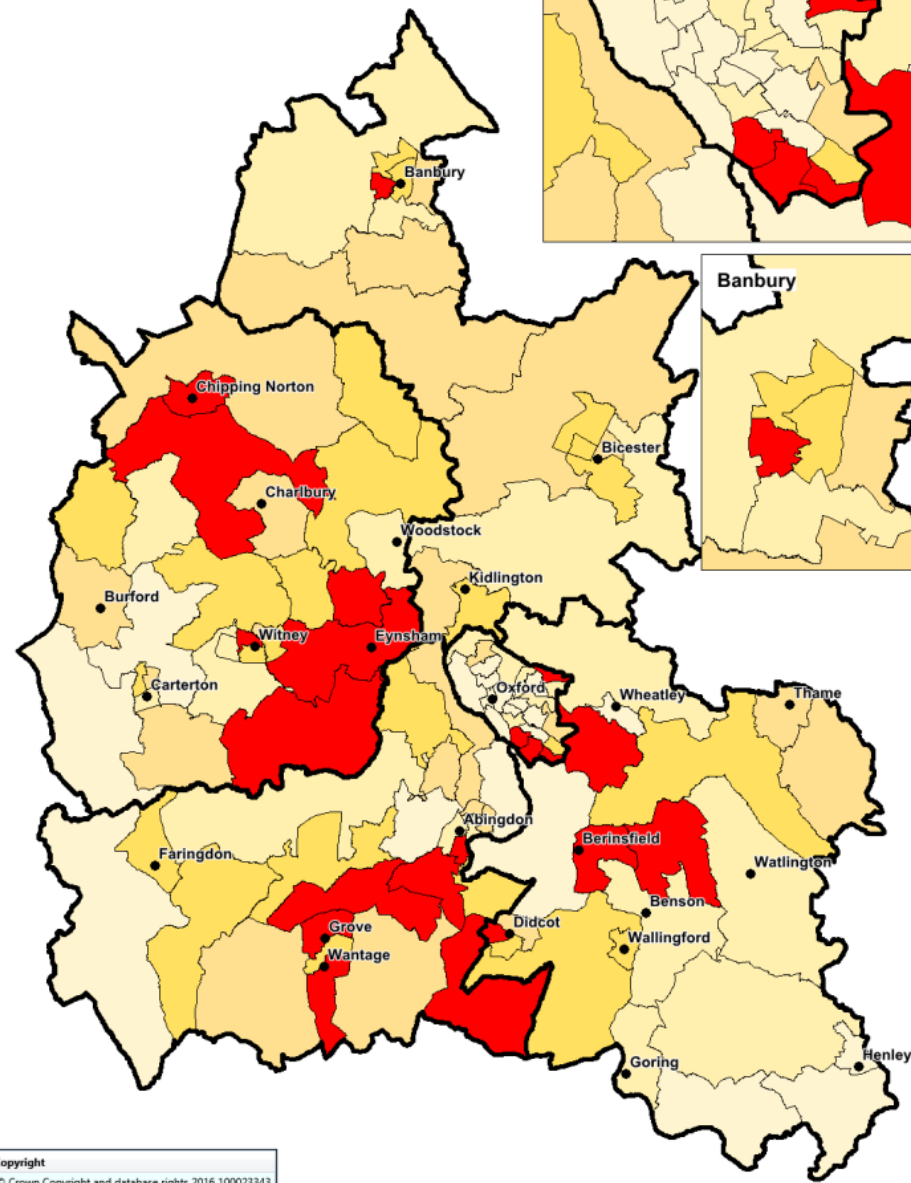
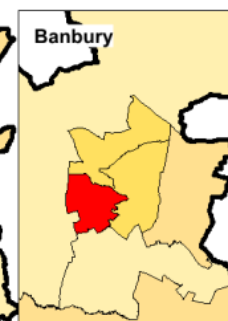
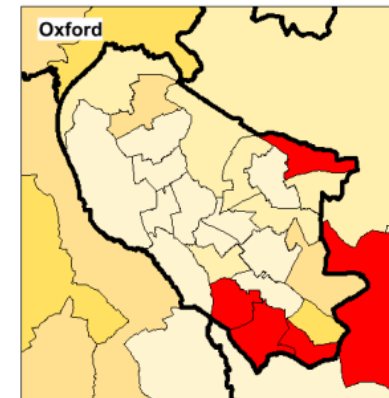
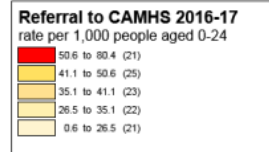




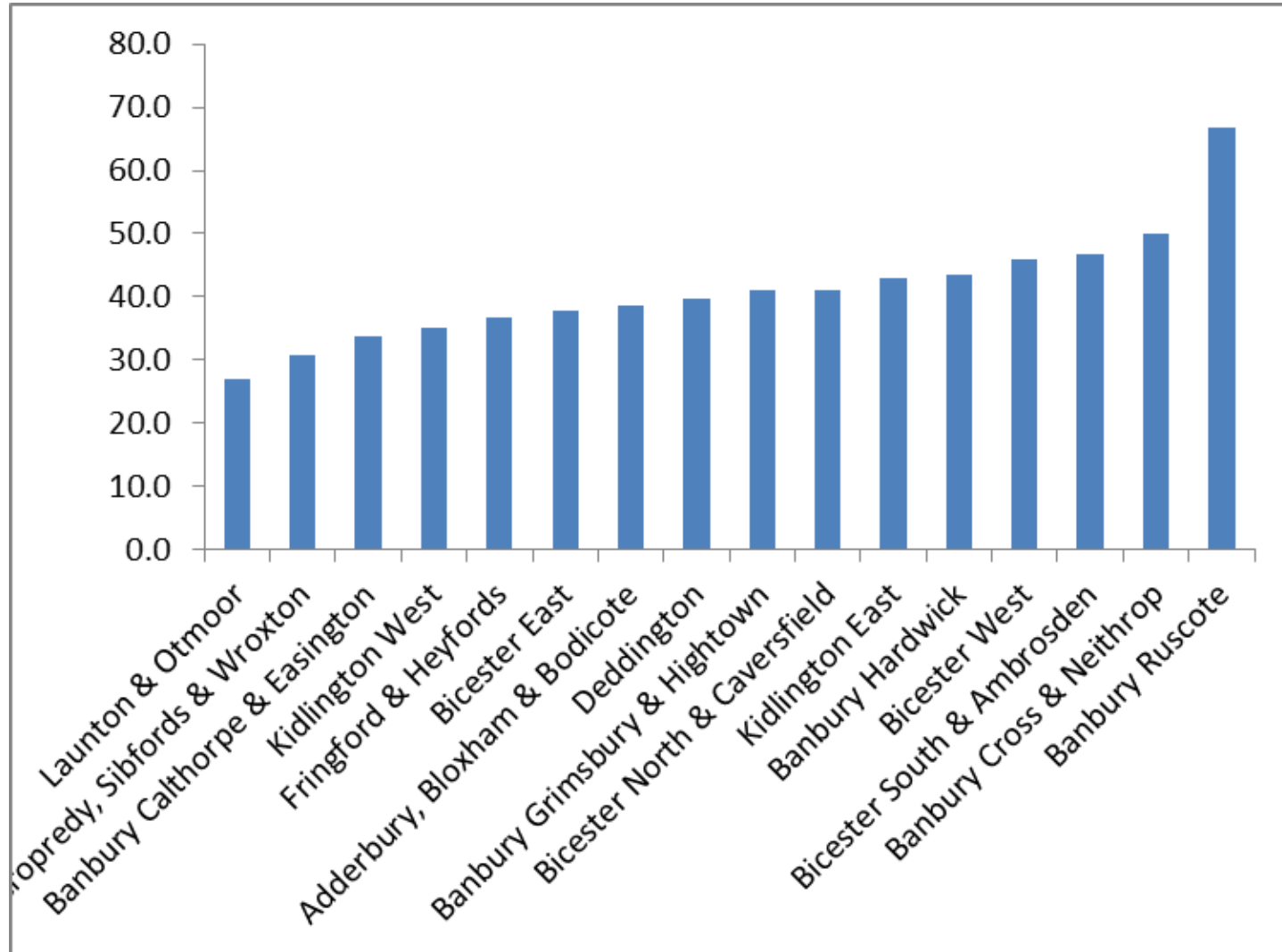
# Referrals to Oxford Health CAMHS 2016-17

## Wards in top quintile

District	Ward	Count	Rate per 1,000 aged 0-24
Cherwell	Banbury Ruscote	255	66.8
Oxford	Rose Hill and Iffley	121	57.9
	Barton and Sandhills	142	55.0
	Northfield Brook	155	54.3
	Littlemore	100	52.2
	South Oxon	Didcot West	118
Vale of WH	Garsington & Horspath	51	58.2
	Chalgrove	54	54.7
	Berinsfield	68	53.4
	Blewbury & Harwell	99	76.2
	Grove North	92	57.4
West Oxon	Wantage Charlton	102	56.0
	Abingdon Caldecott	120	54.2
	Drayton	46	53.2
	Steventon & the Hanneys	36	52.7
	Witney Central	93	62.0
West Oxon	Chadlington and Churchill	29	59.2
	Freeland and Hanborough	63	58.9
	Standlake, Aston and Stanton Harcol	65	55.6
	Eynsham and Cassington	78	52.4
	Chipping Norton	89	51.2



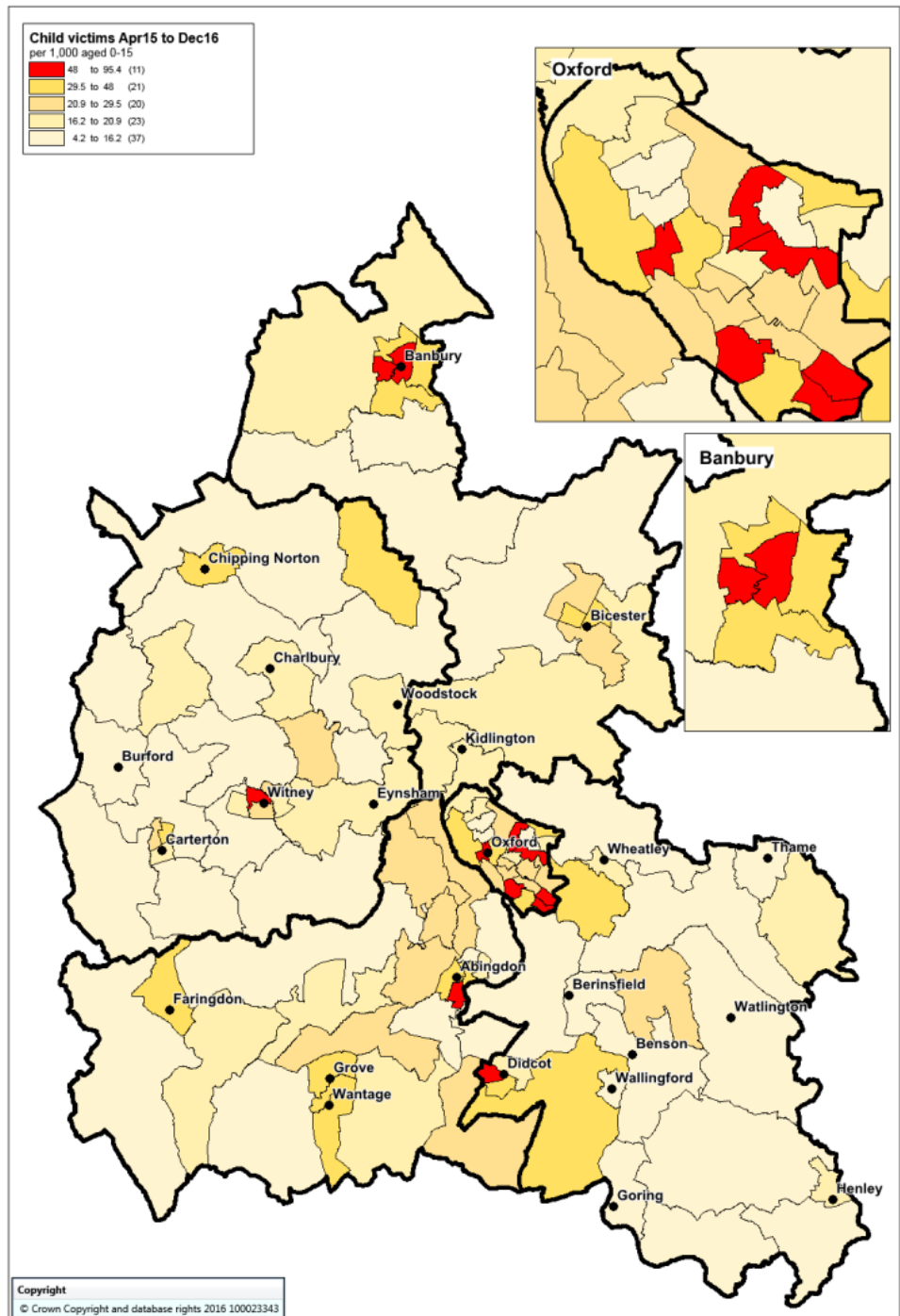
# Referrals to CAMHS per 1000 people 0-24



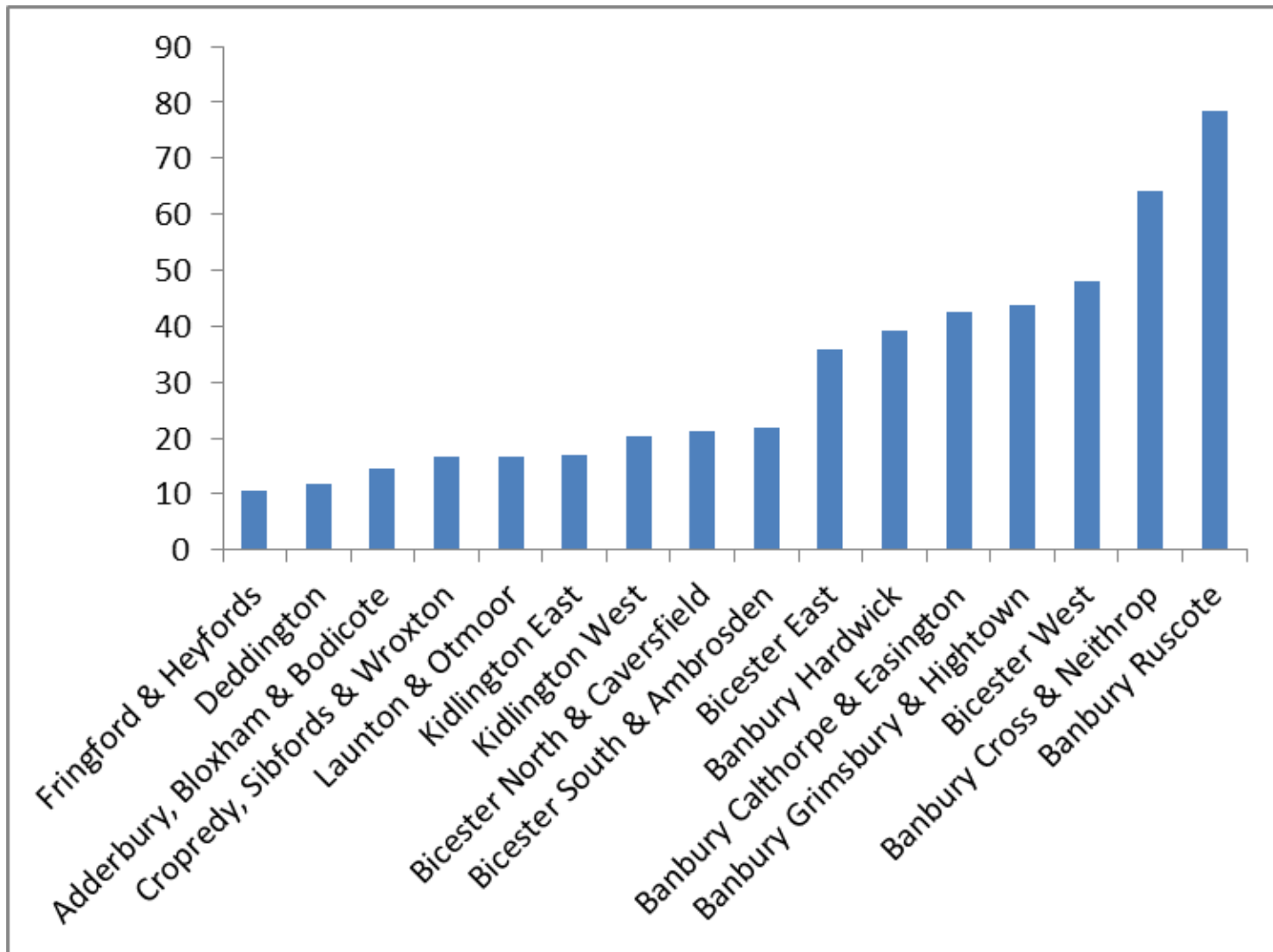
# Child victims of crime

## Wards in top quintile

District	Ward	Count	rate per 1,000 aged 0-15
Cherwell	Banbury Ruscote	203	78.4
	Banbury Cross and Neithrop	112	64.3
Oxford	Northfield Brook	121	60.5
	Churchill	64	58.2
	Headington Hill and Northwa	58	57.2
	Blackbird Leys	83	54.2
	Carfax	10	53.5
	Rose Hill and Iffley	70	49.3
	South Oxon	Didcot West	92
Vale of WH	Abingdon Caldecott	76	50.8
West Oxon	Witney Central	49	50.6

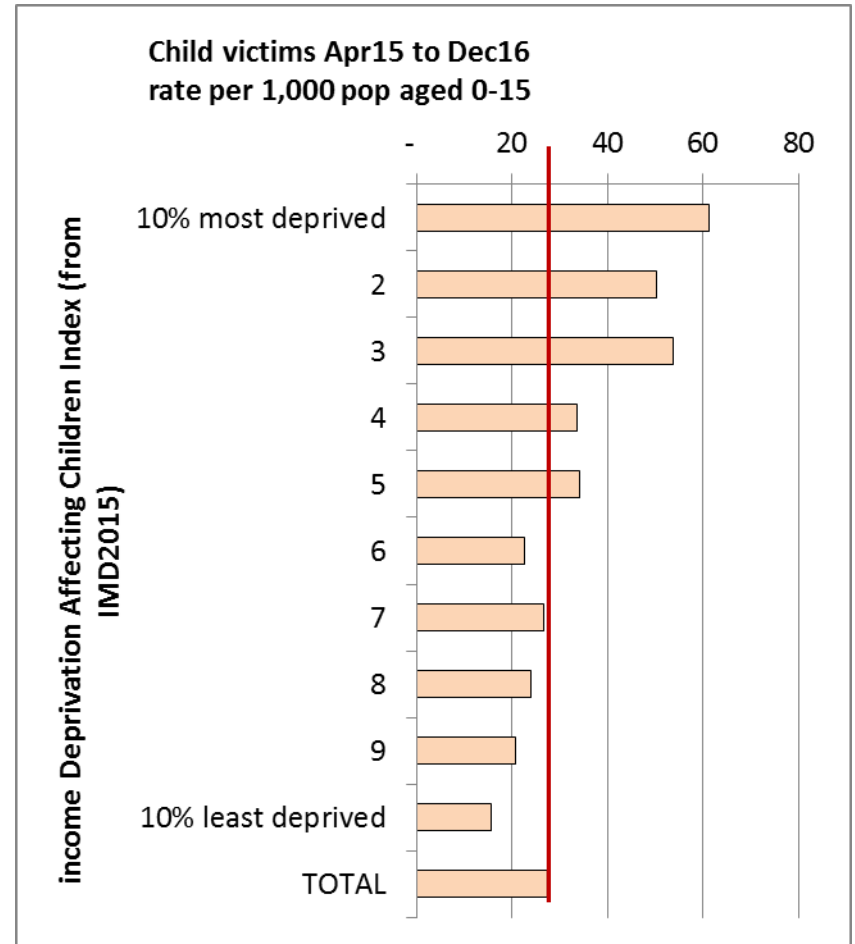
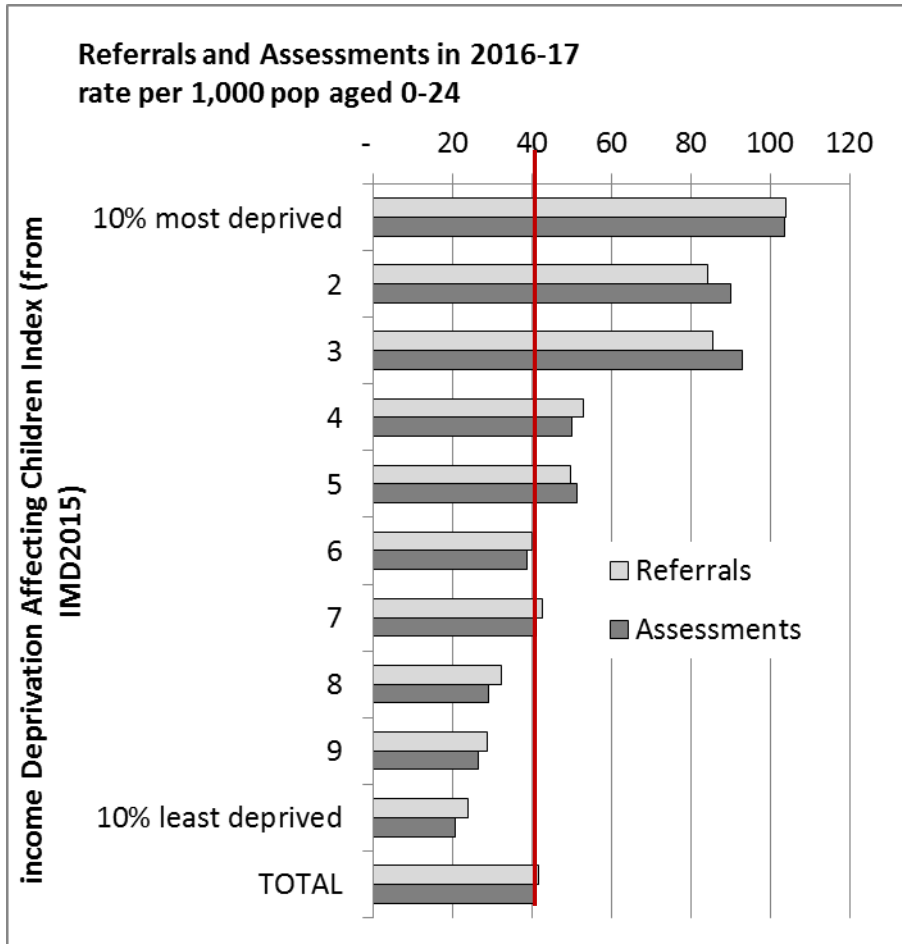


# Child victims of Crime per 1000 people 0-17



# **ANALYSIS BY INCOME DEPRIVATION AFFECTING CHILDREN**

# Vulnerable children data mapped to most vs least deprived areas on child poverty (income deprivation affecting children index 2015)

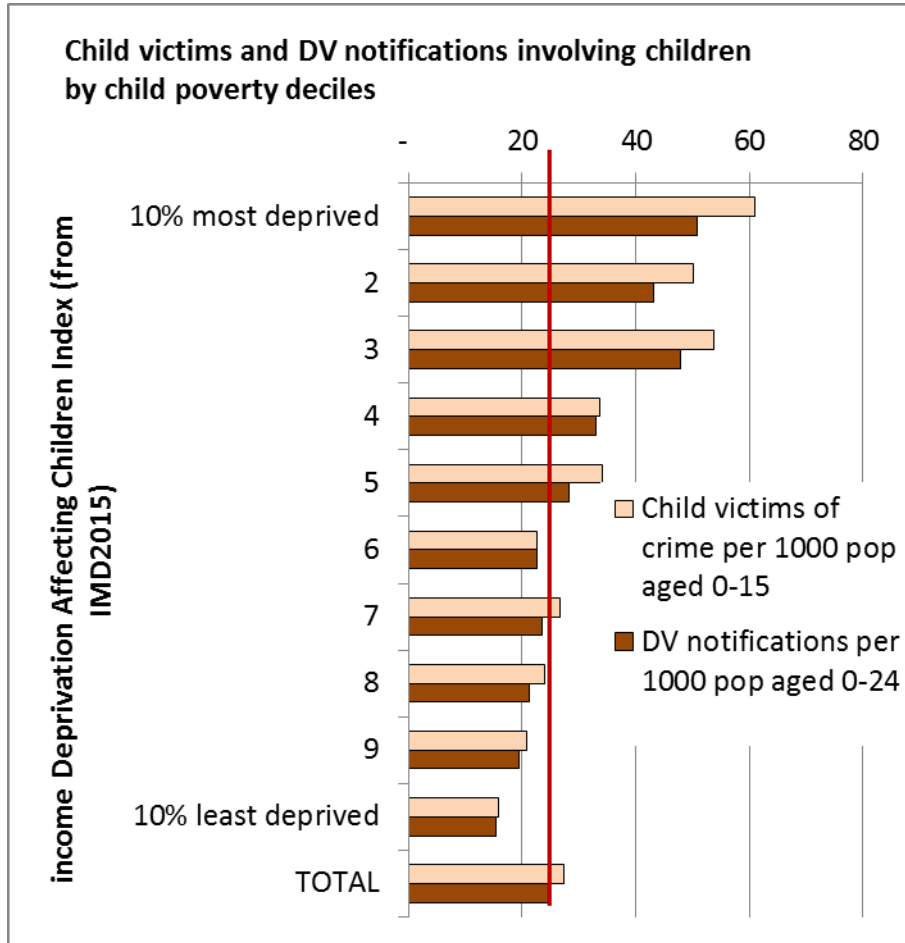


Oxfordshire County Council  
5,903 child referral postcodes, 5,740 child assessment postcodes mapped

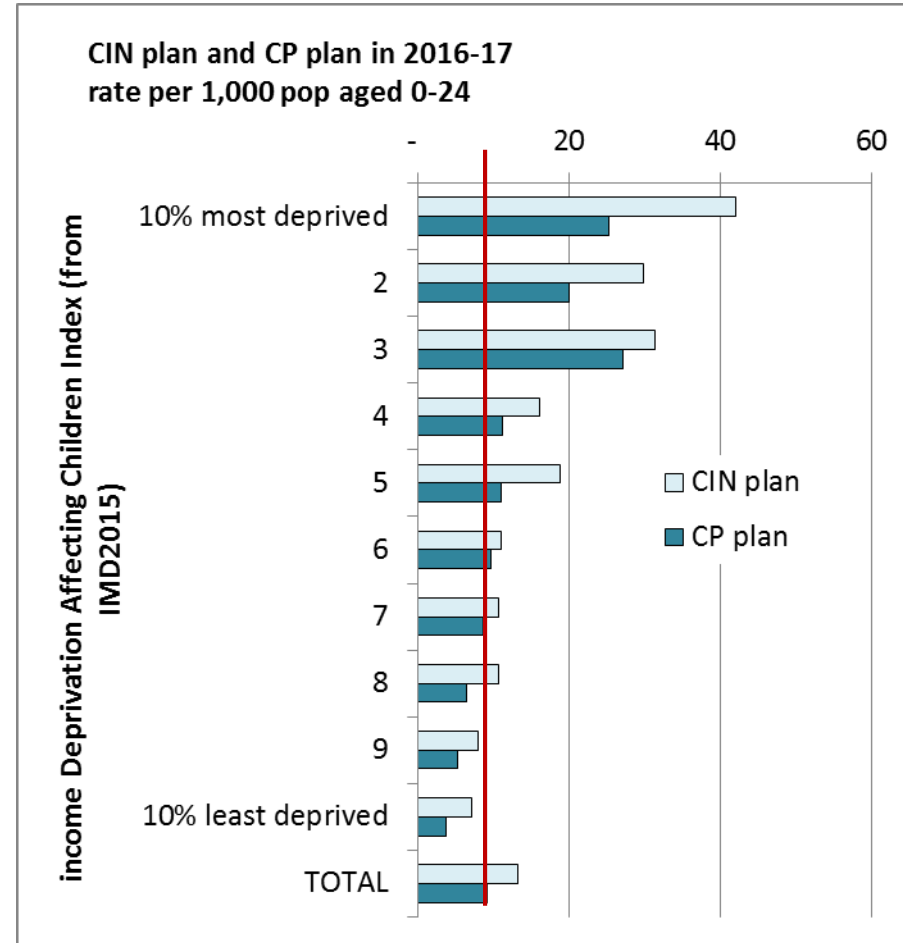
Thames Valley Police  
3,348 child victim postcodes mapped

# Vulnerable children data mapped to most vs least deprived areas on child poverty

(income deprivation affecting children index 2015)

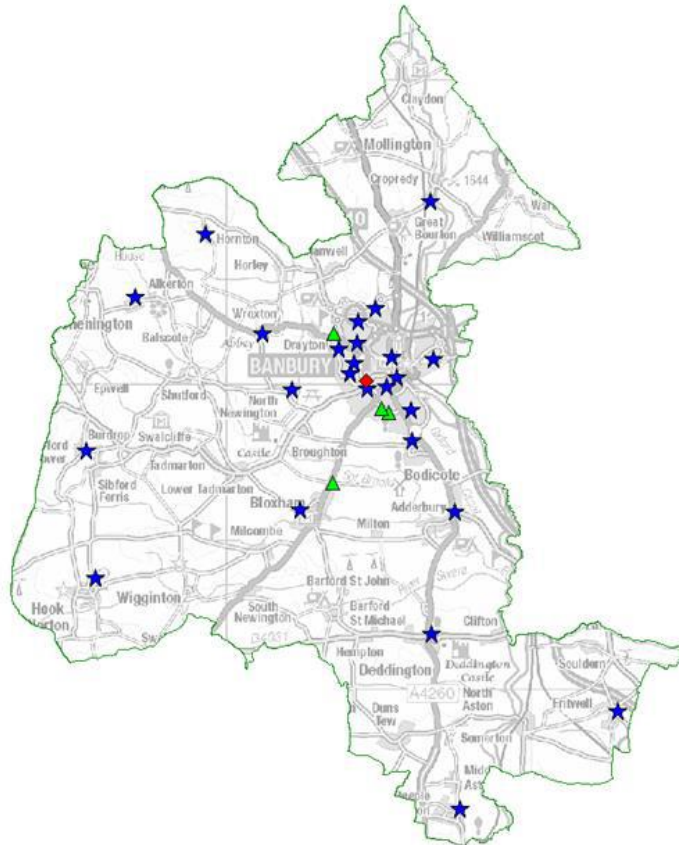


Thames Valley Police  
 3,493 DV notification involving children postcodes mapped  
 3,348 child victims postcodes mapped



Oxfordshire County Council  
 1,877 Children in Need Plan postcodes mapped  
 1,302 Child Protection postcodes mapped

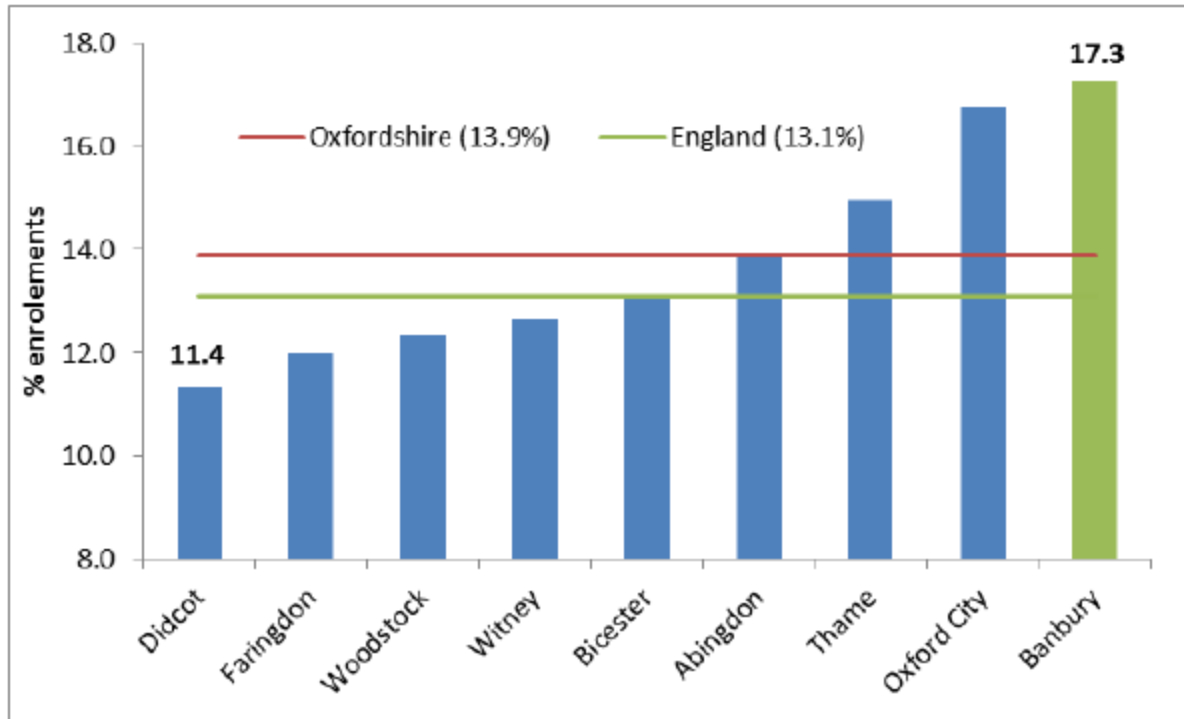
# Banbury Locality – School Profile



- Nursery school (0)
- ★ Primary school (26)
- ▲ Secondary school (5)
- ◆ Special school (1)



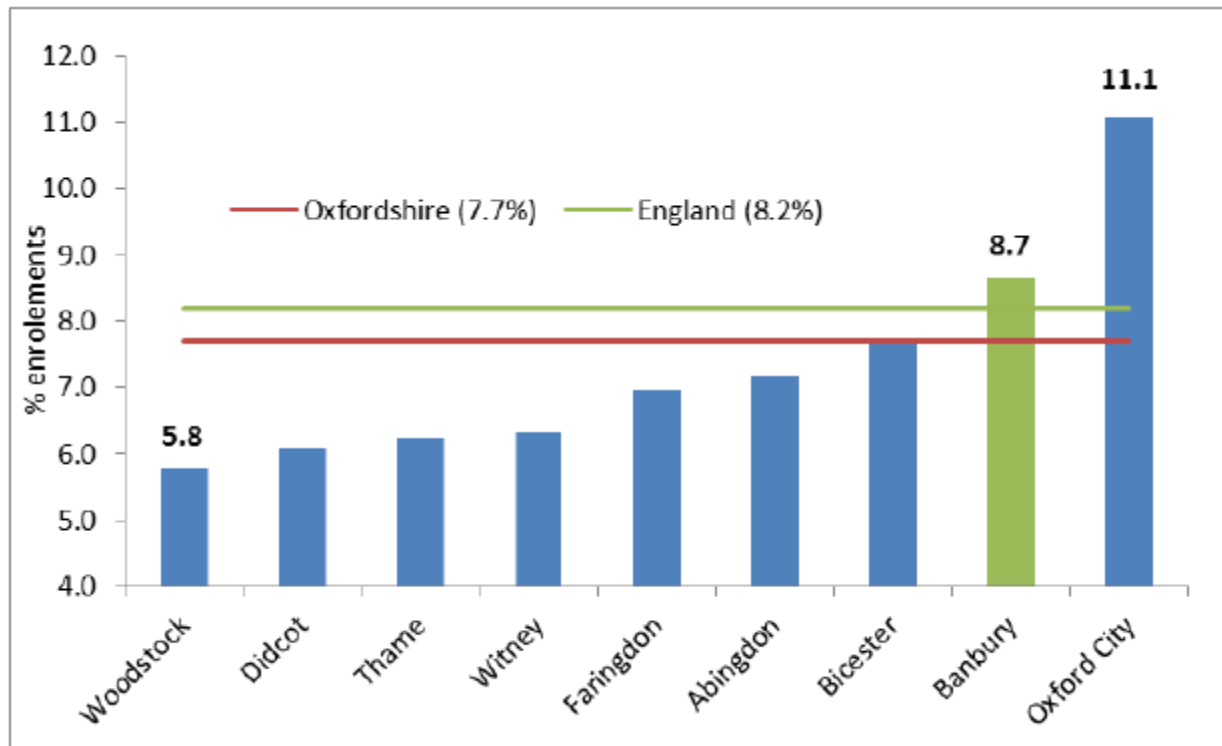
# Persistent absence rates (secondary schools) 2015/16



In 2015/16, 610 pupils were classed as persistently absent from secondary schools in the Banbury locality

359 pupils received a fixed term exclusion from secondary schools in the Banbury locality

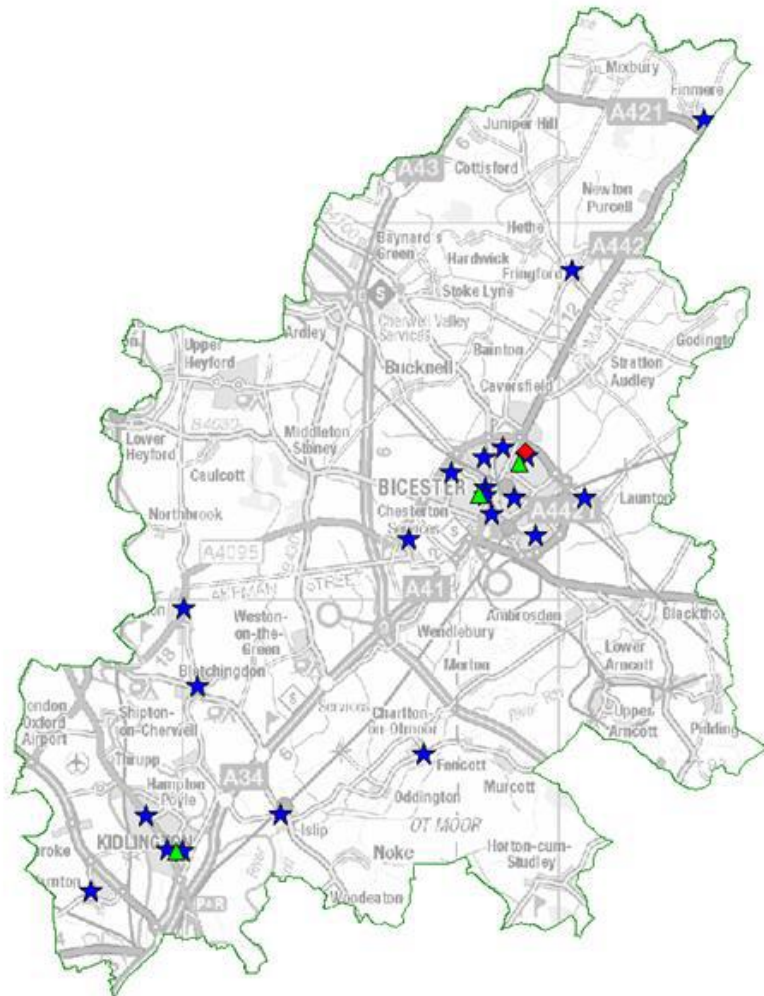
# Persistent absence rates (primary schools) 2015/16








In 2015/16, 495 pupils were classed as persistently absent from primary schools in the Banbury locality

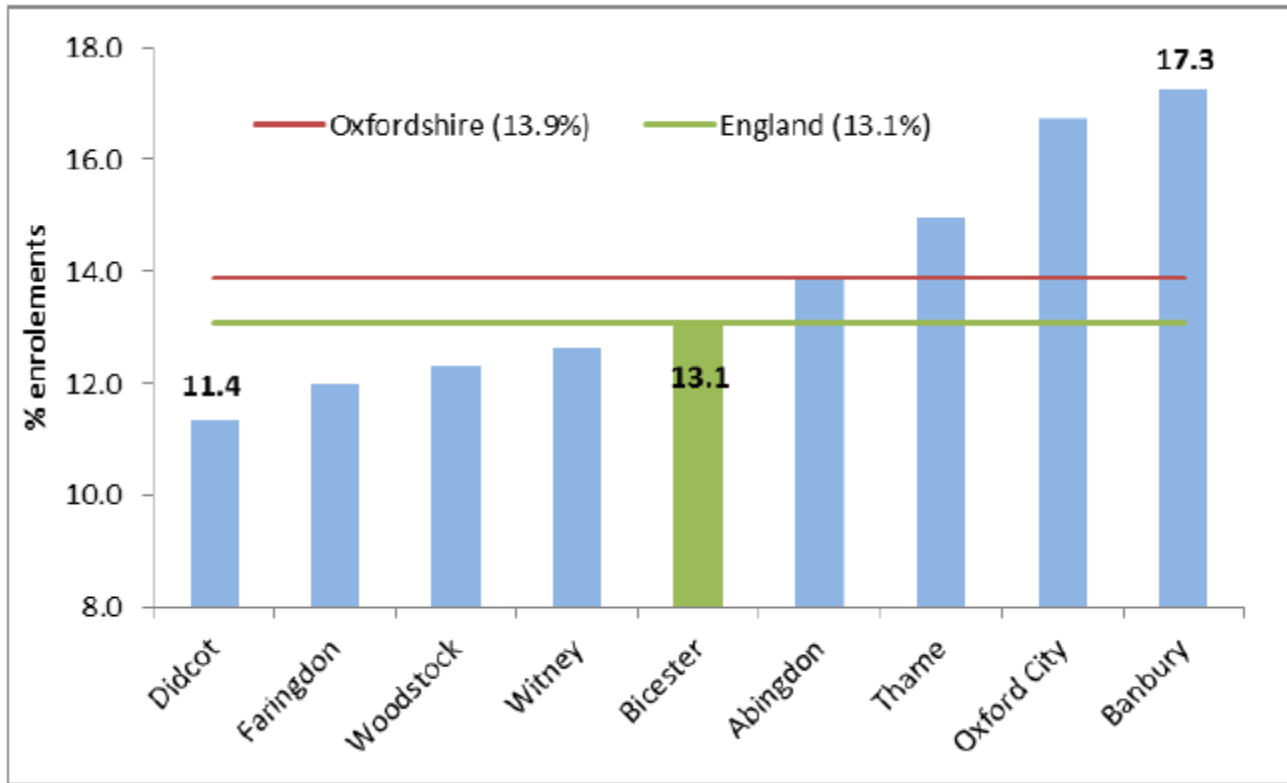
61 pupils received a fixed term exclusion from primary schools in the Banbury locality

# Bicester Locality – School Profile



-  Nursery school (0)
-  Primary school (23)
-  Secondary school (3)
-  Special school (1)
-  All Through School (1)

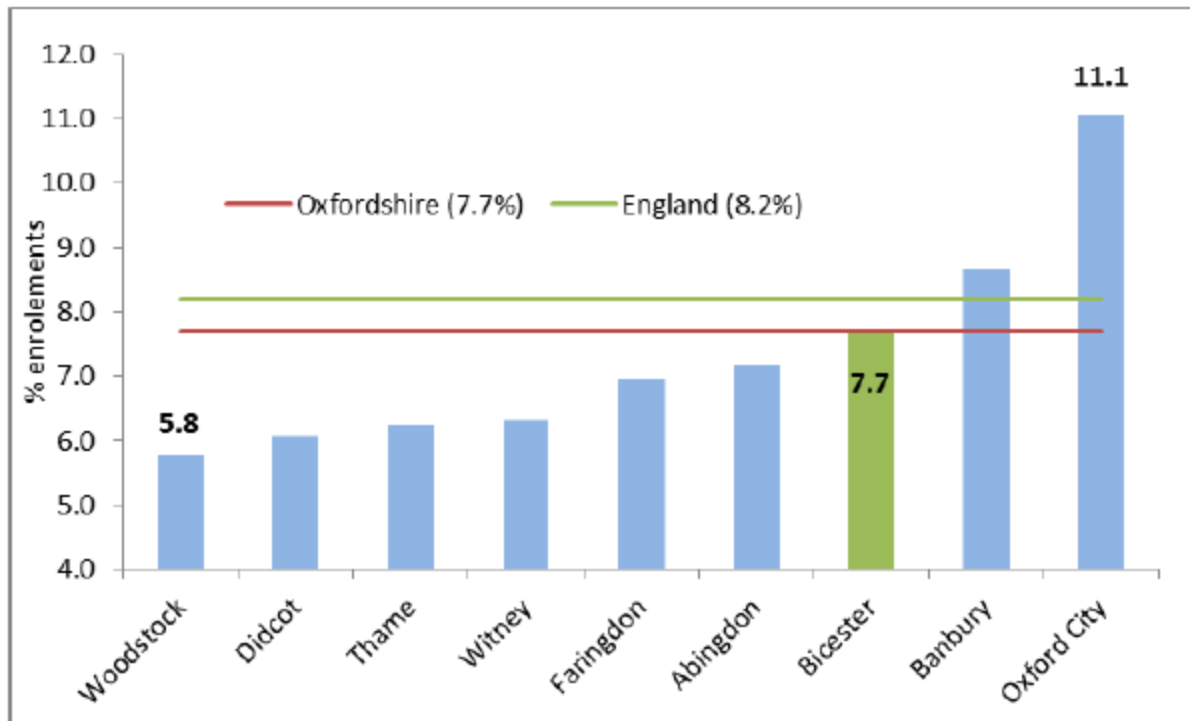
# Persistent absence rates (secondary schools) 2015/16



In 2015/16, 380 pupils were classed as persistently absent from secondary schools in the Bicester locality

158 pupils received a fixed term exclusion from secondary schools in the Bicester locality

# Persistent absence rates (primary schools) 2015/16



In 2015/16, 385 pupils were classed as persistently absent from primary schools in the Bicester locality

36 pupils received a fixed term exclusion from primary schools in the Bicester locality