

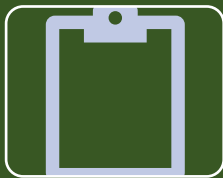


Understanding Population Revisions and Census data

James Carter
Oxfordshire County Council



Census



Survey

- Send a survey to everyone
- National Census



Requests from organisations

- Ask another organisation
- School census



Central database

- Run a query from a single database
- GP register



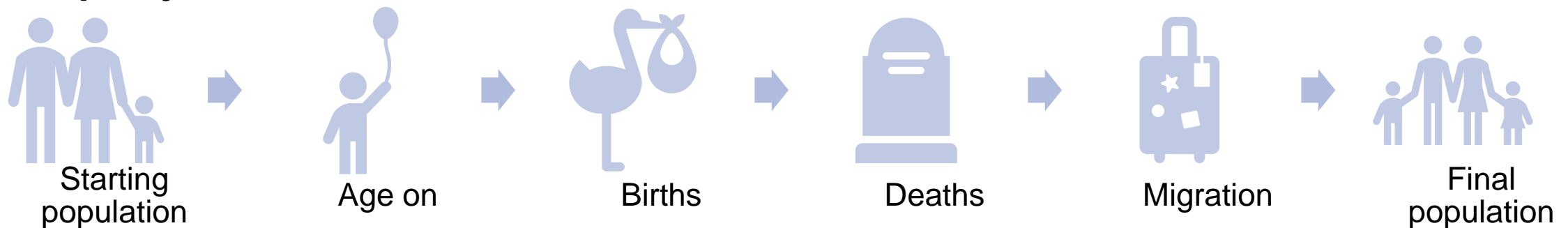
Administrative data

- Combine many databases together
- Statistical population dataset

- Intent to count the whole population group
- Can take many forms
- Can also include adjustments for missing people

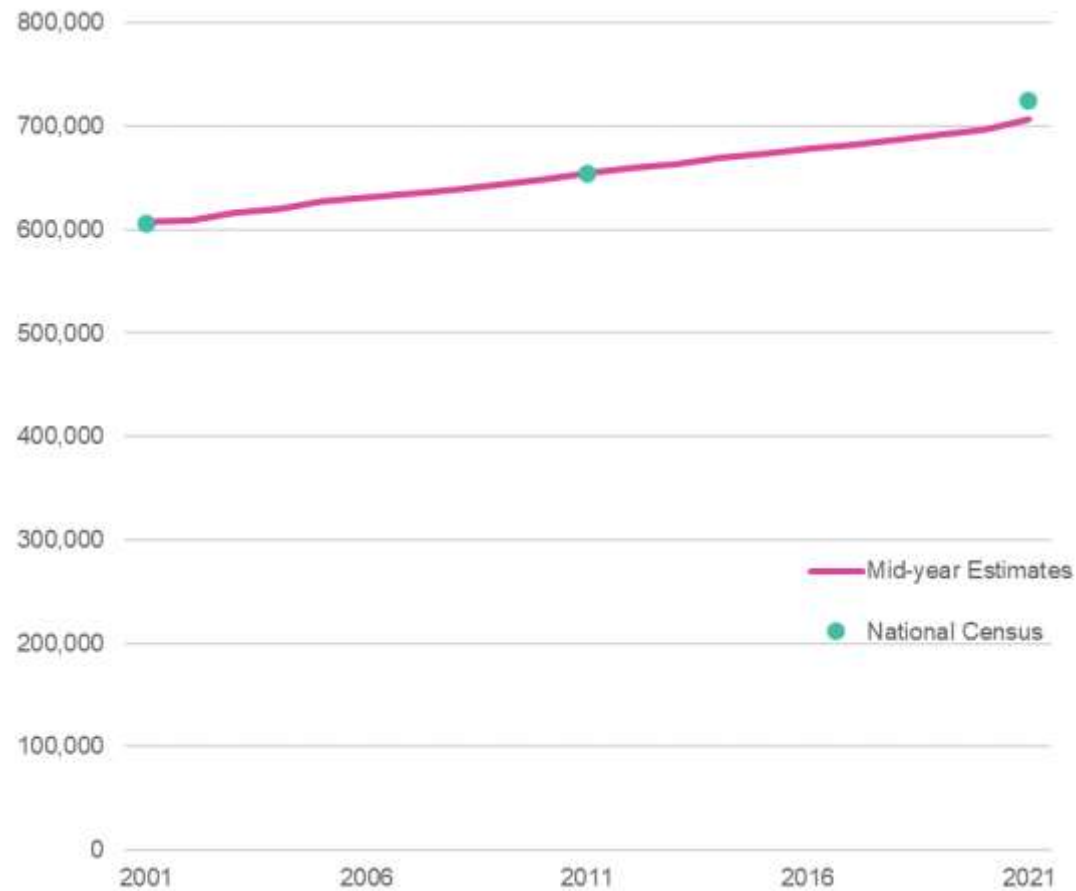
Cohort component method

- Based on components of change
- Used between census and for future population
- Examples being the mid-year estimates and population projection

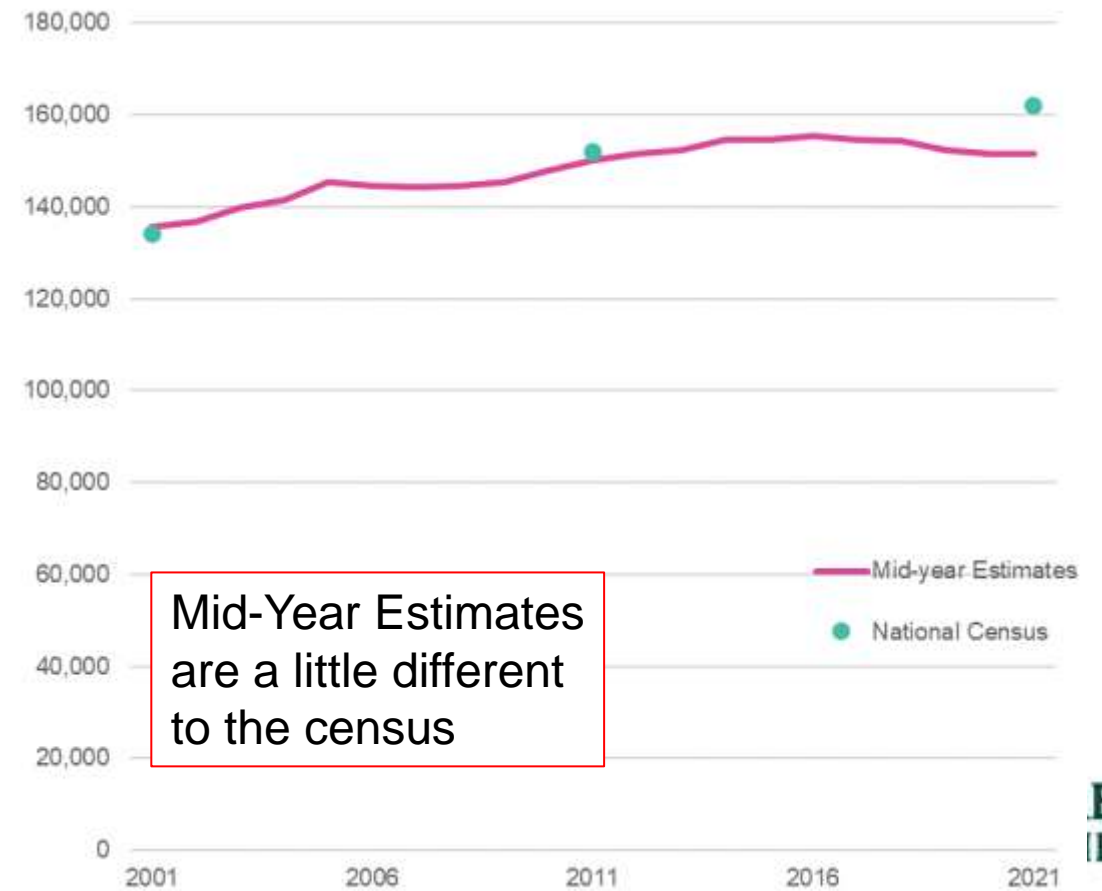


Comparing Census and Mid-year Estimates

Oxfordshire Population



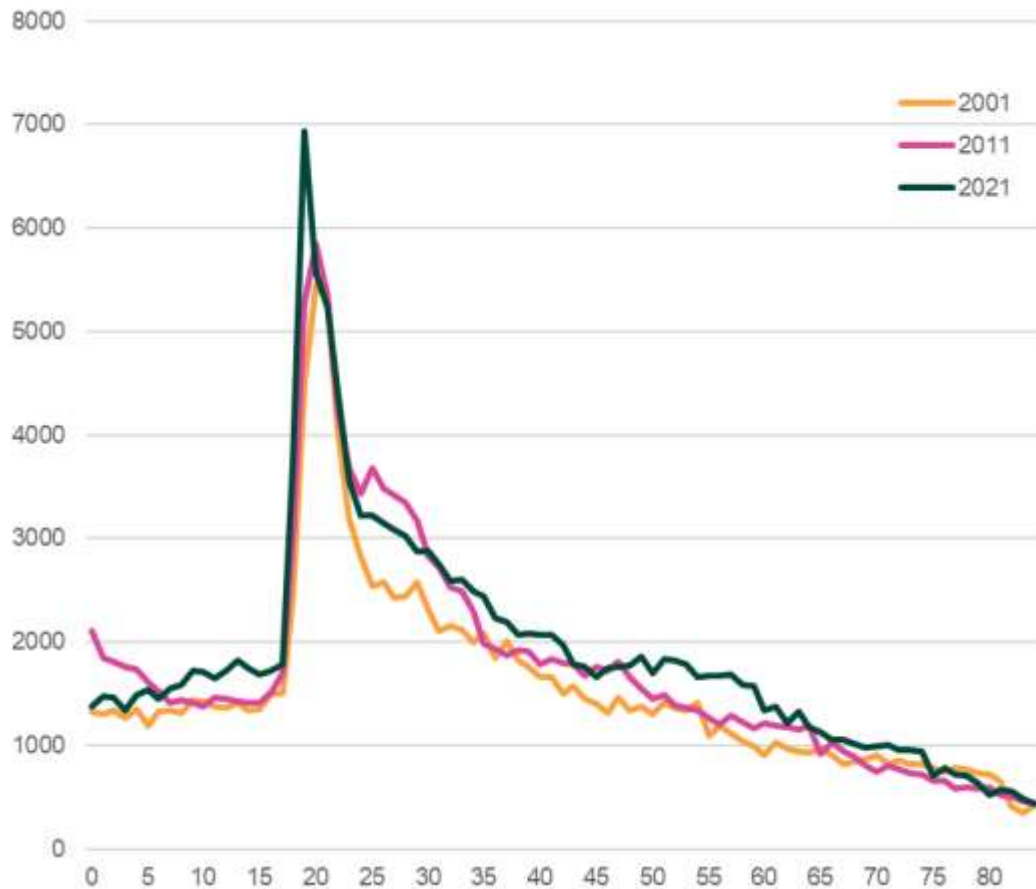
Oxford Population



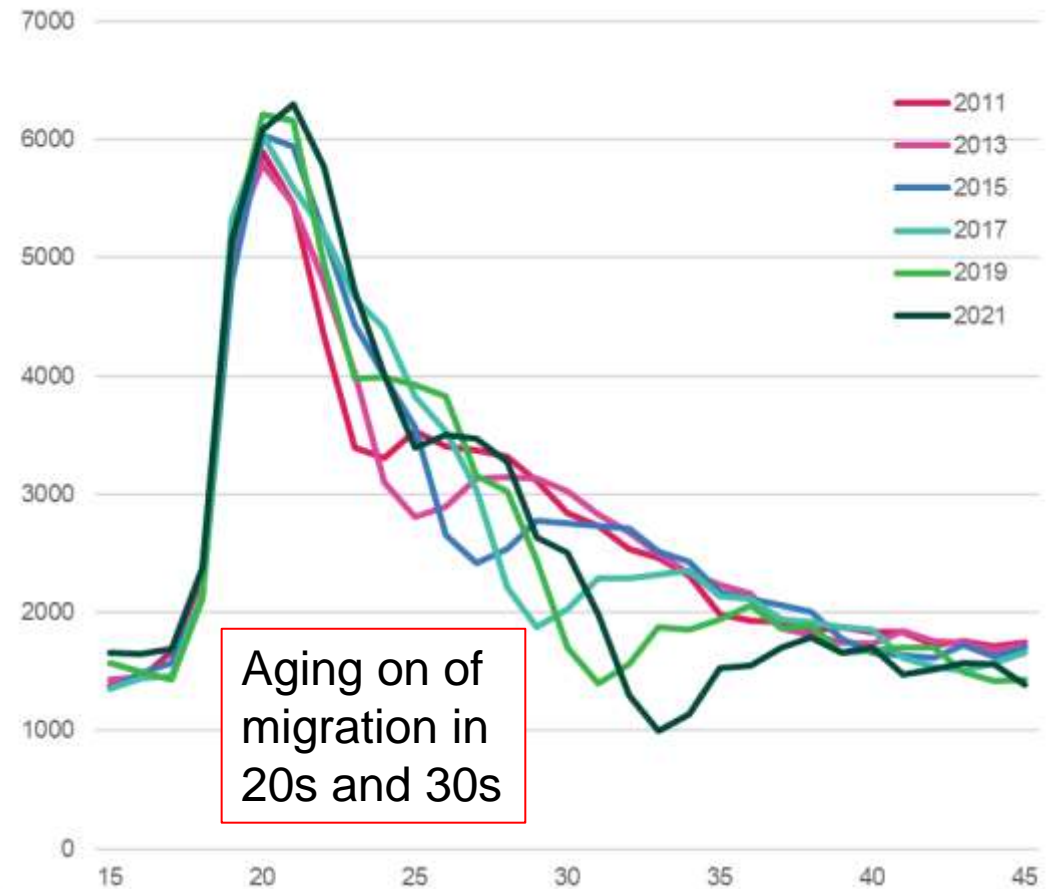
Mid-Year Estimates are a little different to the census

Example: Oxford Age profile

Census age profile of Oxford

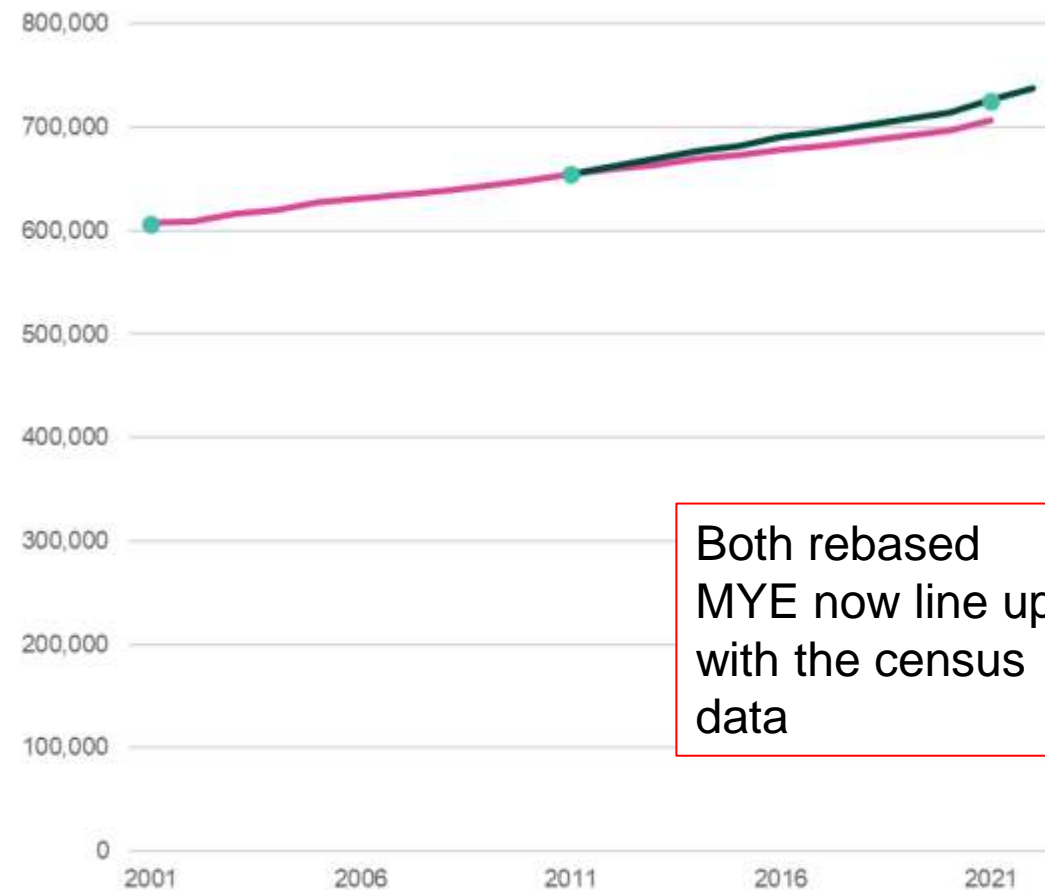


MYE profile of Oxford (ages 15-45)

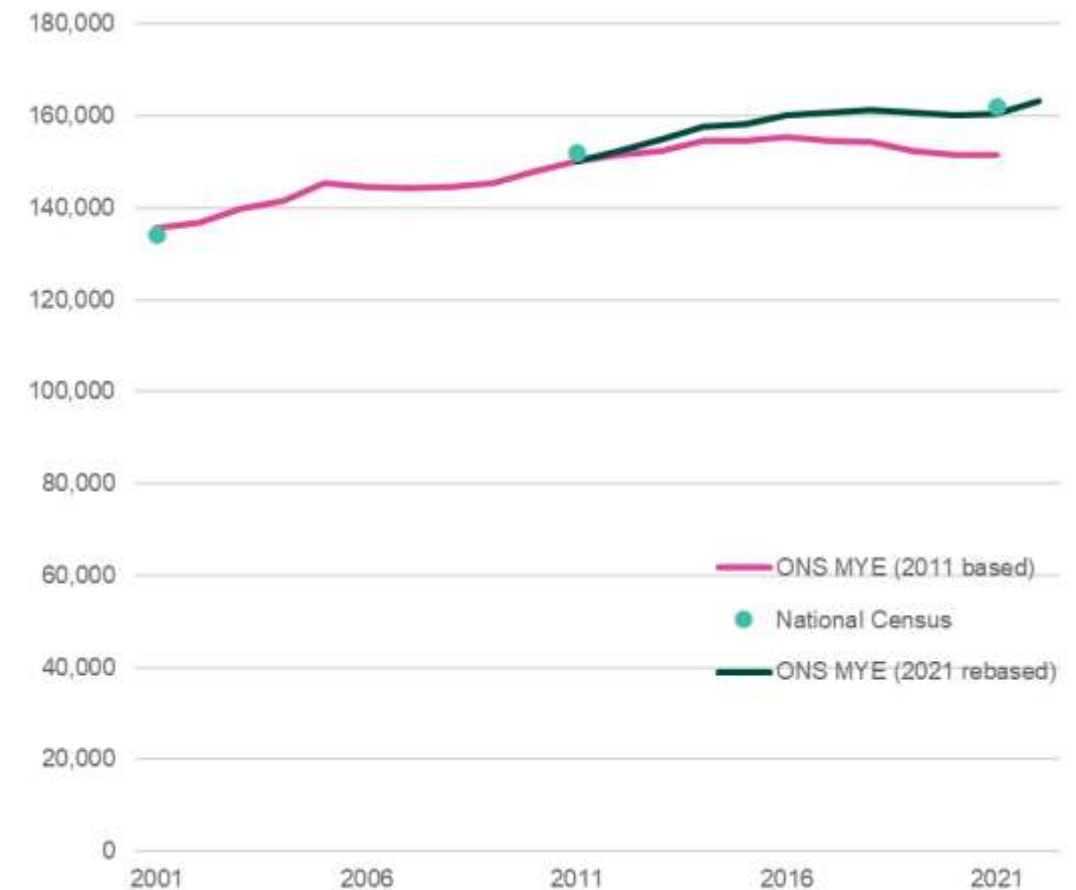


Comparing Census and rebased Mid-year Estimates

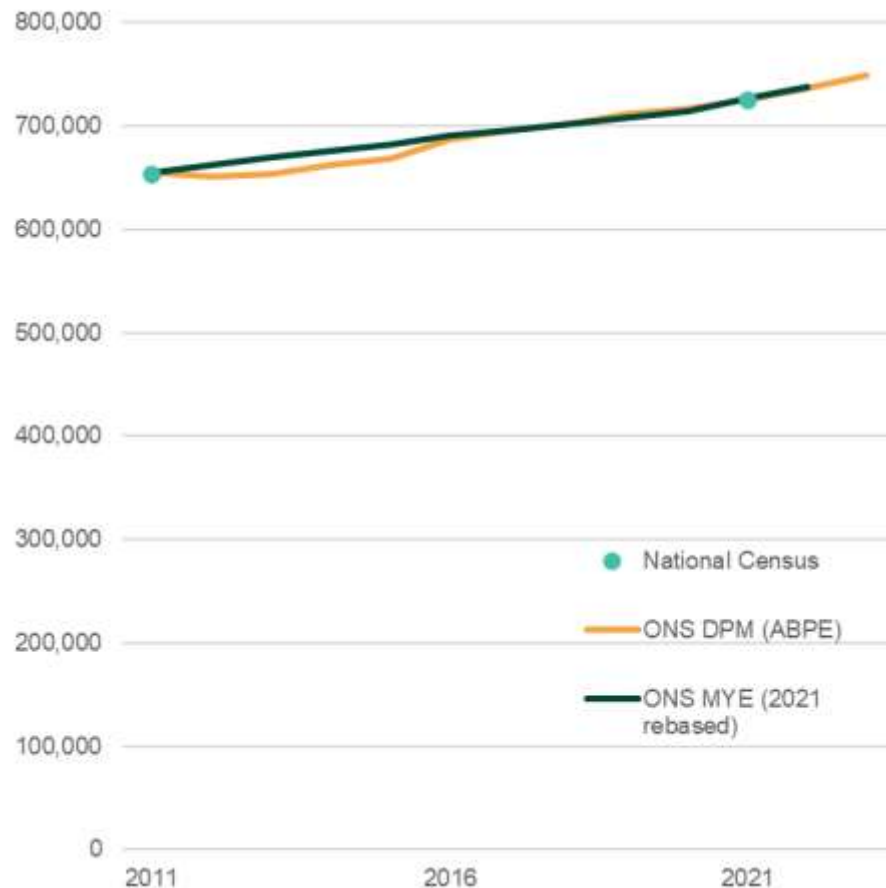
Oxfordshire Population



Oxford Population



Next steps



- Rebased mid-year estimate is available
<https://www.ons.gov.uk/releases/rebasingofmidyearpopulationestimatesfollowingcensus2021>
- ONS are researching a new method for mid-year estimates called the dynamic population model (DPM)
- Latest article which includes a case study on Oxford students
<https://www.ons.gov.uk/peoplepopulationandcommunity/populationandmigration/internationalmigration/articles/adminbasedpopulationestimates/localauthoritiesinenglandandwalesmid2021tomid2023>
- This is a hybrid of admin-based census and components of change
- ONS video on DPM
https://www.youtube.com/watch?v=UCWS9kEGX_U



Other Geographies

- Small areas include output areas, electoral and health areas are a few month behind LA areas.
- Small areas mid-year estimates for 2021 & 2022 came out yesterday

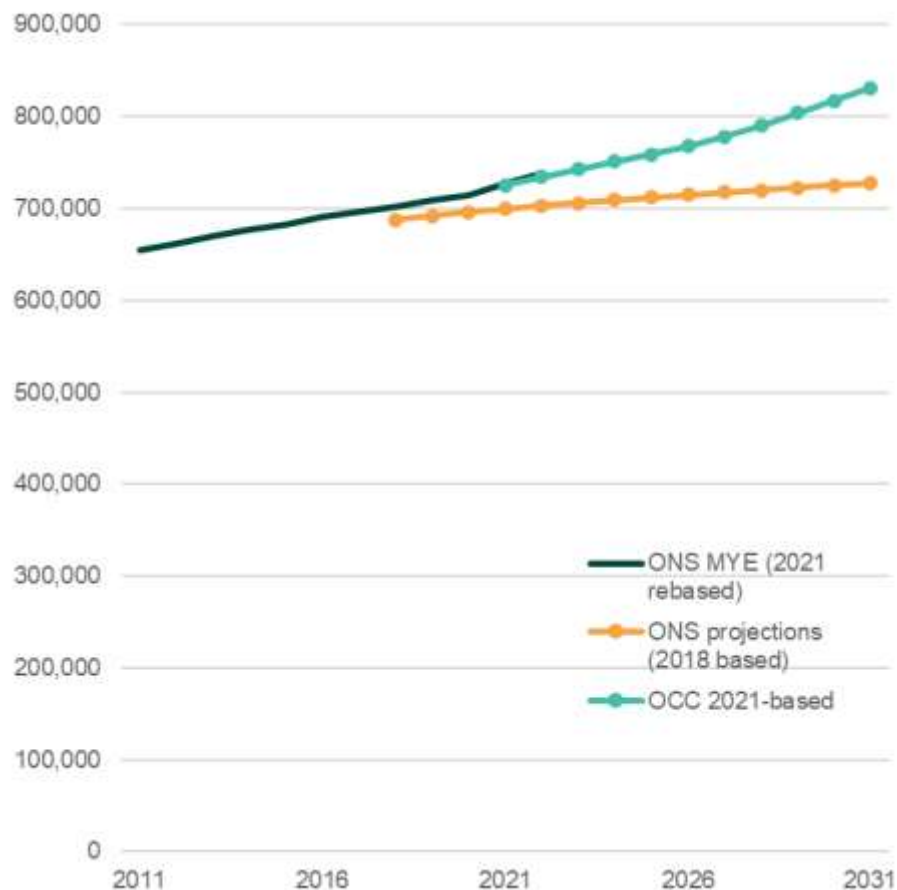
<https://www.ons.gov.uk/releases/populationestimatesbyoutputareaselectoralthandothergeographiesenglandandwalesmid2021andmid2022>

- Small area rebasing for 2012 to 2020 are due in June or July

<https://www.ons.gov.uk/releases/populationestimatesbyoutputareaselectoralthandothergeographiesenglandandwalesrebasedmid2012tomid2020>

- Until the small area basing comes out be careful with comparing the 2012-2020 to LA and 2021+ data

Future Population



- There is a couple of models for the future population of Oxfordshire. One by ONS and by County Council (OCC).
- ONS projection from 2018 with the next revision in early 2025
- OCC last published this time last year and will be revised in the next few months.
- For more detail:
<https://insight.oxfordshire.gov.uk/cms/future-population>