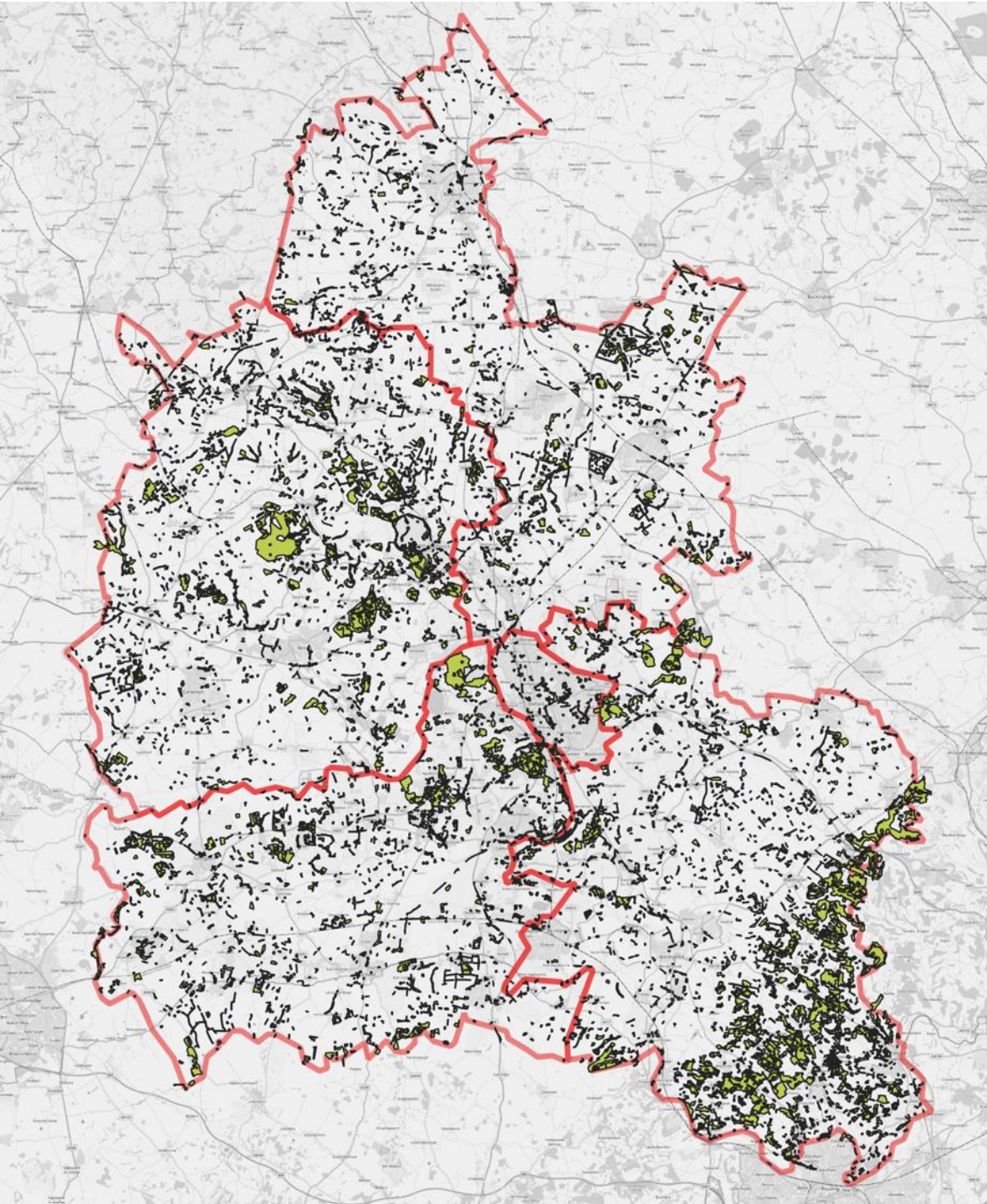




The Oxfordshire Treescape Opportunity Map

**Increasing
Oxfordshire's
natural capital**




Oxfordshire woodland cover is 9.1%

L.A. name	L.A. area (Ha)	Woodland area (ha)	Woodland cover (%)
South Oxfordshire	67,903	9,297	13.7%
West Oxfordshire	71,511	6,530	9.1%
Vale of White Horse	57,923	4,659	8.0%
Oxford	4,566	257	5.6%
Cherwell	58,926	3,049	5.2%
Oxfordshire	260,829	23,793	9.1%

The broadleaf woodland

Tree density per ha: 1,400

Land use: Many possible habitats


A photograph of a broadleaf woodland. A dirt path leads through a dense forest of tall, slender trees. The ground is covered with a carpet of bluebells. A large, thick tree trunk is visible on the right side of the path. The foliage is lush green, and sunlight filters through the canopy.

Introducing
the treescape
concept

The hedgerow

Tree density per ha: 90

Land use: Arable




Introducing
the treescape
concept

Silvoarable

Tree density per hectare: 70-170

Land use: Arable



Introducing
the treescape
concept

Street trees

Tree density per hectare: 1-10



Garden trees

Tree density per hectare: 100-250

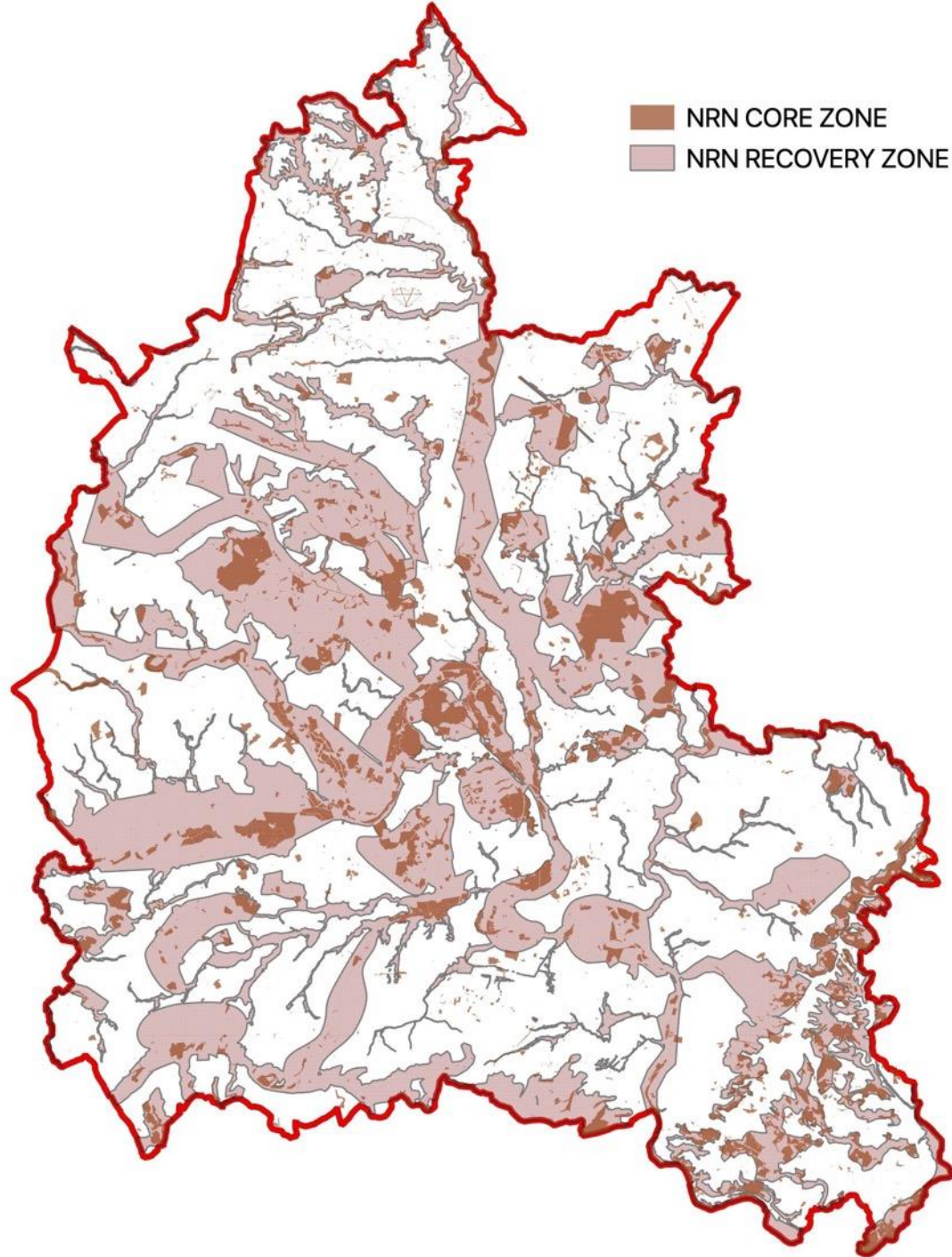




Nature based solutions

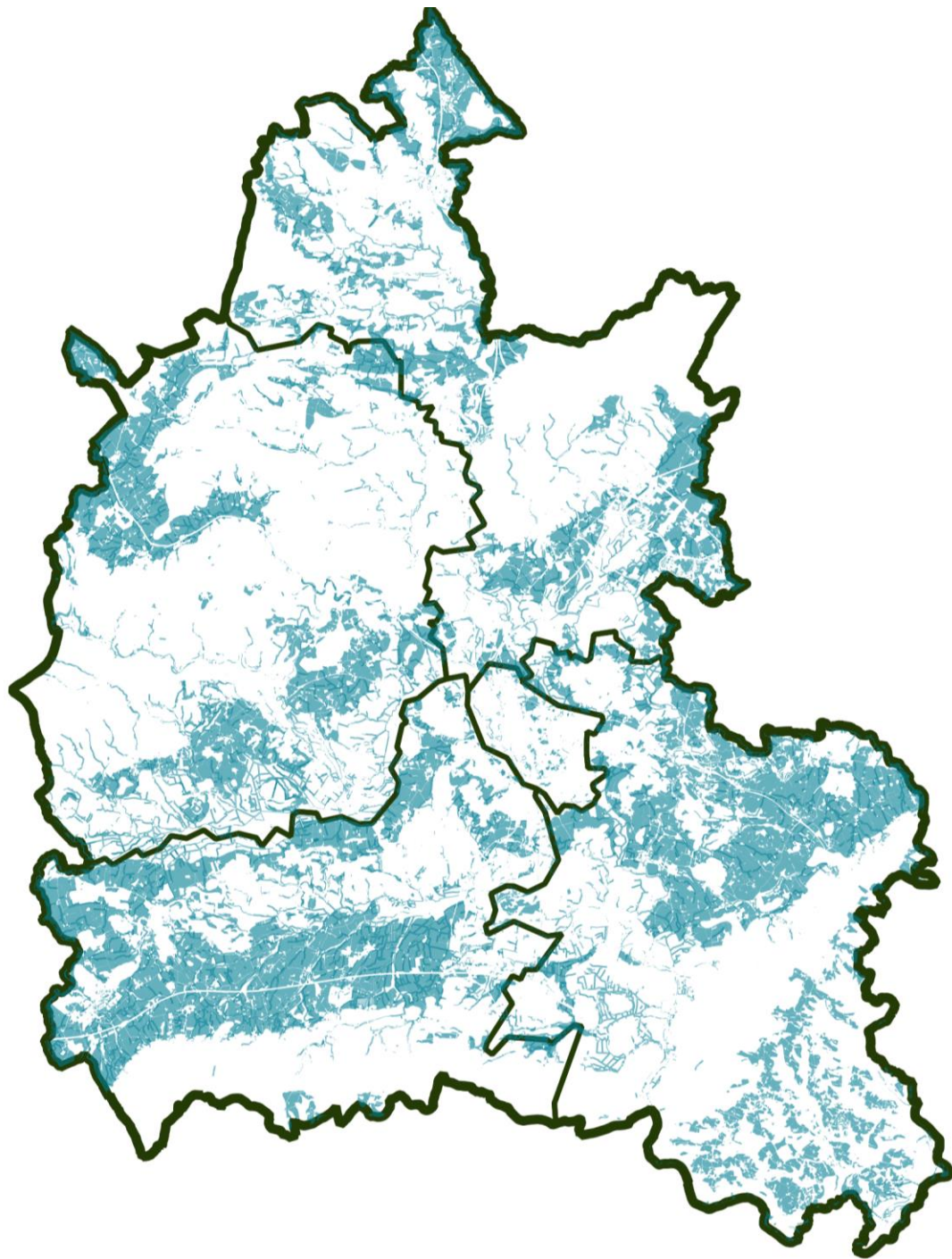
Nature based solutions gifted by the natural environment bring many and varied benefits to people.

Carbon Capture and storage	Biodiversity
Natural flood management & erosion control	Food production
Air quality, noise, shade and cooling	Timber production
Landscape character and aesthetic	Recreation and wellbeing



Nature Recovery Network

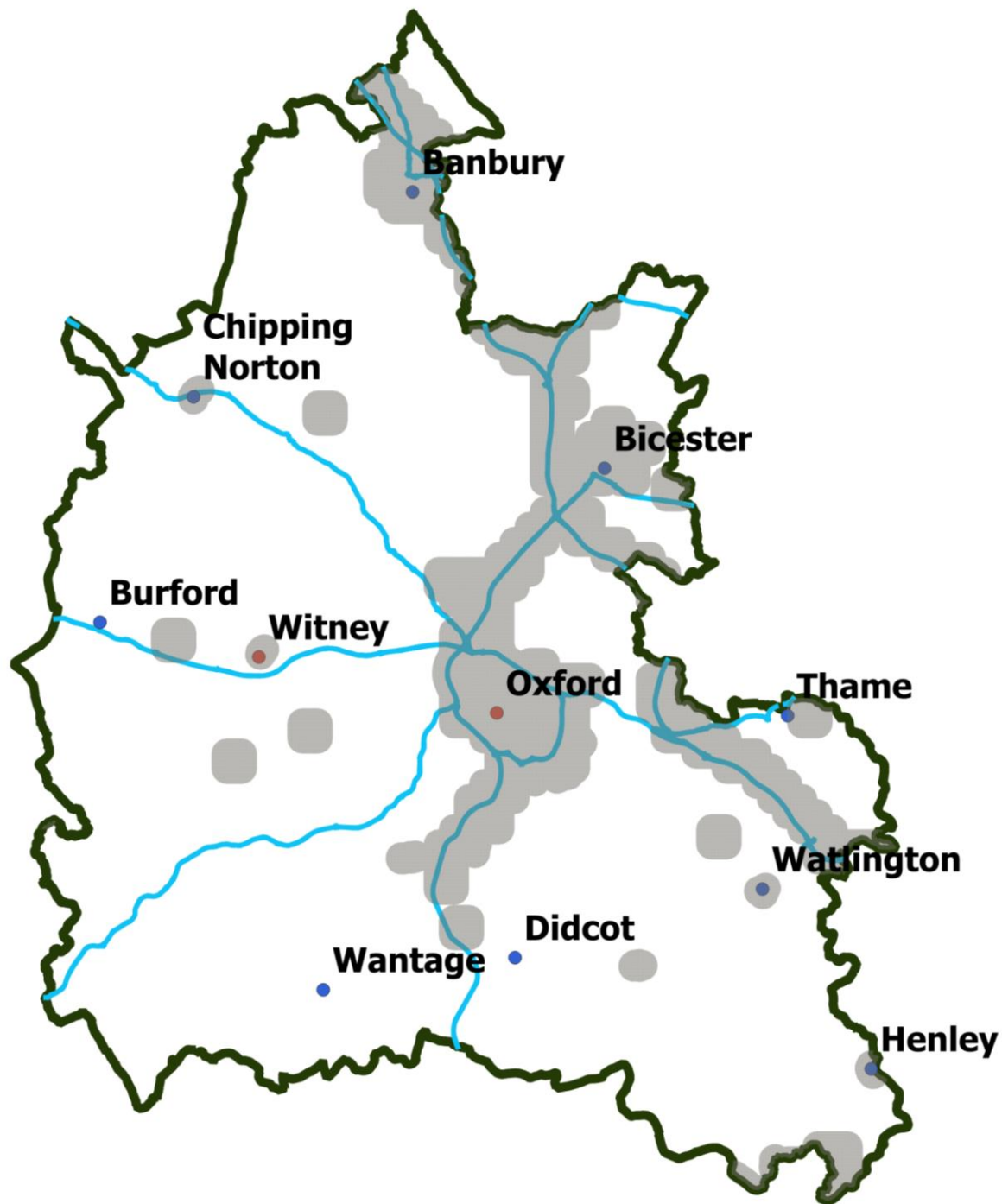
The latest draft proposals for Oxfordshire's Nature Recovery Network establish both core, protected areas and wider recovery areas where natural capital interventions will bring greater value.



Flood control potential

The Thames and many of its tributaries all run through Oxfordshire.

This makes the county a priority areas for flood control measures.

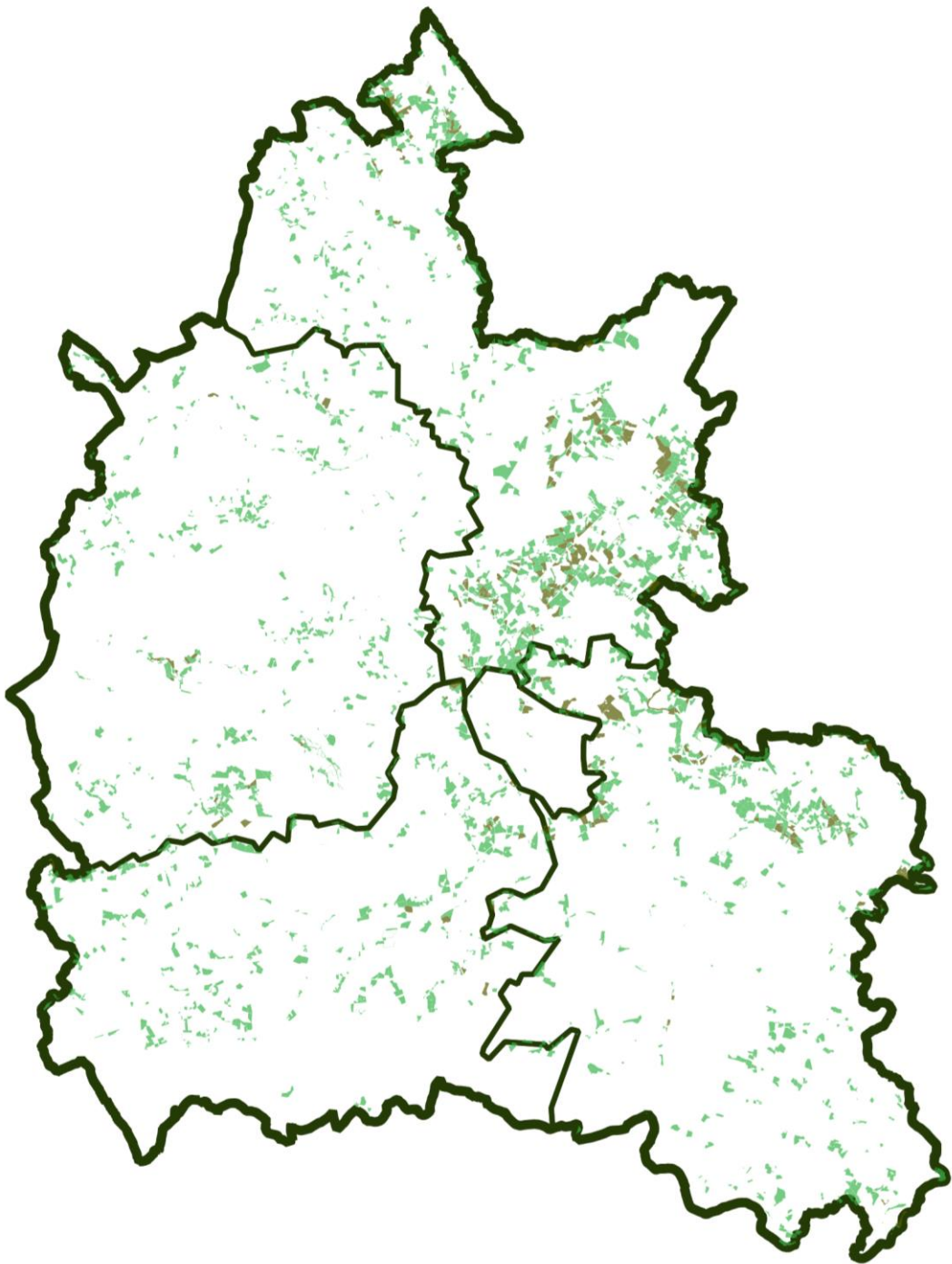


Air quality regulation

The provision of woodland and other treescapes in densely populated, highly polluted areas can help to improve air quality.

Multiple benefits of woodland

Siting woodland in the right places can bring up to five benefits from one single location.



Who we are

The project is lead by a small executive team reporting to a management group.

The management group

Tim Stevenson, Lord Lieutenant of Oxfordshire

Sam Clarke, Deputy Lord Lieutenant and landowner

Dom Hare, CEO, Blenheim Palace

Karen Woolley, Chair, Trust for Oxfordshire's Environment

Niel Nicholson, Chair, Nicholson's Forestry

Ian Curtis, The Environmental Change Institute, Oxford University

Nick Mottram, Sustainability Manager, Oxfordshire County Council

The members of the consultee group

Role	Confirmed to date
Chair	Sam Clarke, Deputy Lord Lieutenant
Landowners	Richard Watson, Countryside Manager, National Trust Alice Ritchie, Land Use Policy Advisor, CLA Emma Watson, Gasson Associates
Farmers	James Price, Deputy Chair, NFU Oxfordshire Jonty Brunyee, Conygree Farm and manager of Farm-Ed Phil Chamberlain, Crowmarsh Battle Farms
Land agents	Mark Charter, Carter Jonas
Advisors	Alison Smith, Environmental Change Institute Paul Orsi, Sylva Mark Connelly, Cotswolds AONB Jenny Phelps, FWAG Gloucestershire Camilla Burrow, CEO Wild Oxfordshire Martin Hugi, Woodland Trust
Government	Dominic Lamb, South Oxon and Vale Councils Richard Pearce, Forestry Commission (TBC)
Community	Patrick Fleming, Greener Henley Fiona Danks, Watlington Community Action Group

LIVE ELEMENTS

1. [Web App maps](#)
2. [Story map](#)
3. [Our land our Future report](#)
4. [Treescapes guide](#)