





South Oxfordshire District Summary 2019

Published July 2019

Introduction to the District Summary for South Oxfordshire

This is a summary report for Oxford City and includes the following key areas highlighted in the JSNA 2019 Oxfordshire report:

-  Historical and projected population change
-  Public Health England 2019 health summary
-  Key health and wellbeing facts and figures 2019
-  A district inequalities summary (tartan rug)

Other resources include:

[JSNA 2019 Oxfordshire report](#)

[Public Health Dashboards](#)

[Health Needs Assessments](#)

[Community Health and Wellbeing Profiles](#)


[JSNA Bitesize](#)


EMAIL: JSNA@Oxfordshire.gov.uk

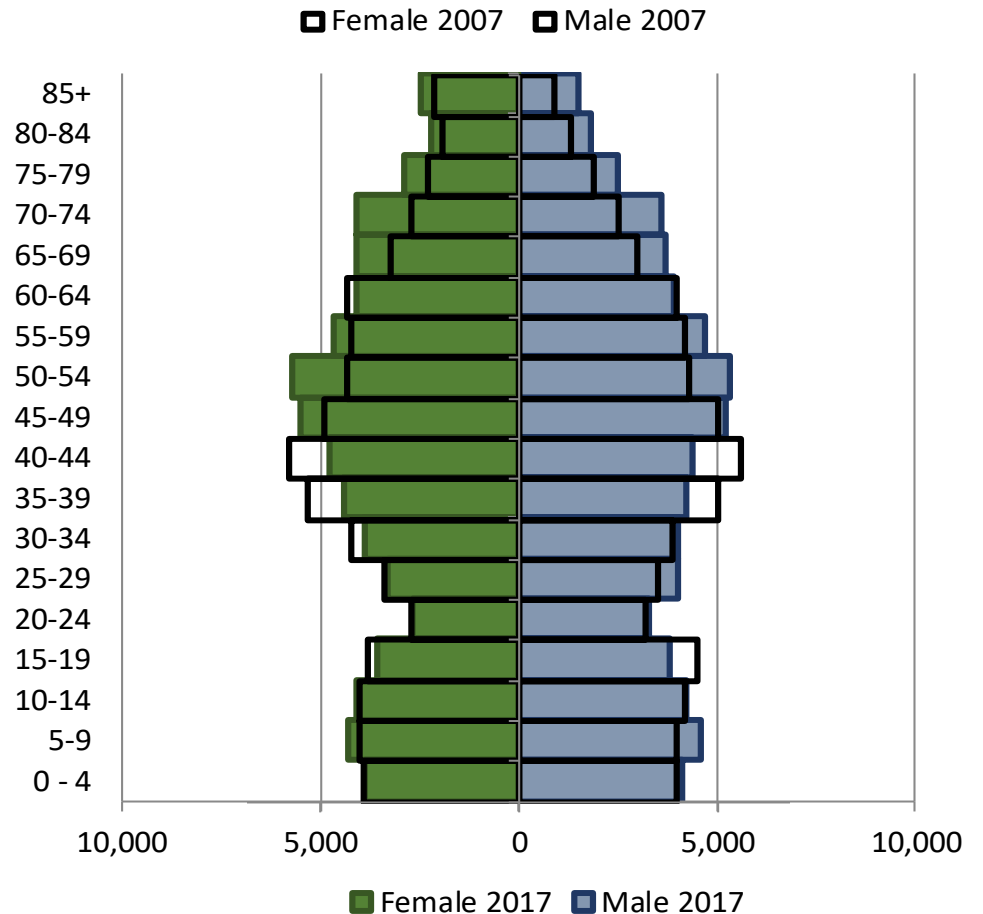
WEB: insight.oxfordshire.gov.uk/cms/joint-strategic-needs-assessment

South Oxfordshire District Population


Historical population change 2007 to 2017


 In mid-2017 there were 139,800 residents in South Oxfordshire. This is projected to increase by 39% by 2037

 There were 4,000 people aged 85+ in South Oxfordshire district. This is projected to increase by 90% by 2037



Health Summary for South Oxfordshire

 The Public Health England local health profile for South Oxfordshire shows that, for the majority of indicators, South Oxfordshire is better than or similar to the national average

 Indicators that are worse than average are killed and seriously injured on roads and estimated diabetes diagnosis rate

The chart below shows how the health of people in this area compares with the rest of England. This area's value for each indicator is shown as a circle. The England average is shown by the red line, which is always at the centre of the chart. The range of results for all local areas in England is shown as a grey bar. A red circle means that this area is significantly worse than England for that indicator. However, a green circle may still indicate an important public health problem.

- Significantly worse than England average
- Not significantly different from England average
- Significantly better than England average
- Not compared



	Indicator names	Period	Local count	Local value	Eng value	Eng worst		Eng best
Life expectancy and causes of death	1 Life expectancy at birth (Male)	2014 – 16	n/a	81.6	79.5	74.2		83.7
	2 Life expectancy at birth (Female)	2014 – 16	n/a	85.5	83.1	79.4		86.8
	3 Under 75 mortality rate: all causes	2014 – 16	906	238.3	333.8	545.7		215.2
	4 Under 75 mortality rate: cardiovascular	2014 – 16	186	48.9	73.5	141.3		42.3
	5 Under 75 mortality rate: cancer	2014 – 16	399	104.5	136.8	195.3		99.1
	6 Suicide rate	2014 – 16	29	8.1	9.9	18.3		4.6
Injuries and ill health	7 Killed and seriously injured on roads	2014 – 16	237	57.5	39.7	110.4		13.5
	8 Hospital stays for self-harm	2016/17	266	205.6	185.3	578.9		50.6
	9 Hip fractures in older people (aged 65+)	2016/17	176	601.0	575.0	854.2		364.7
	10 Cancer diagnosed at early stage	2016	329	56.4	52.6	39.3		61.9
	11 Diabetes diagnoses (aged 17+)	2017	n/a	63.9	77.1	54.3		96.3
	12 Dementia diagnoses (aged 65+)	2017	1,207	68.4	67.9	45.1		90.8
Behavioural risk factors	13 Alcohol-specific hospital stays (under 18s)	2014/15 – 16/17	31	34.9	34.2	100.0		6.5
	14 Alcohol-related harm hospital stays	2016/17	582	425.6	636.4	1,151.1		388.2
	15 Smoking prevalence in adults (aged 18+)	2017	11,328	10.4	14.9	24.8		4.6
	16 Physically active adults (aged 19+)	2016/17	n/a	67.1	66.0	53.3		78.8
	17 Excess weight in adults (aged 18+)	2016/17	n/a	54.2	61.3	74.9		40.5
Child health	18 Under 18 conceptions	2016	25	10.2	18.8	36.7		3.3
	19 Smoking status at time of delivery	2016/17	110	7.7	10.7	28.1		2.3
	20 Breastfeeding initiation	2016/17	1,261	85.9	74.5	37.9		96.7
	21 Infant mortality rate	2014 – 16	11	2.4	3.9	7.9		0.0
	22 Obese children (aged 10–11)	2016/17	175	12.9	20.0	29.2		8.8
Inequalities	23 Deprivation score (IMD 2015)	2015	n/a	8.6	21.8	42.0		5.0
	24 Smoking prevalence: routine and manual occupations	2017	n/a	21.5	25.7	48.7		5.1
Wider determinants of health	25 Children in low income families (under 16s)	2015	1,815	7.4	16.8	30.5		5.7
	26 GCSEs achieved	2015/16	851	69.0	57.8	44.8		78.7
	27 Employment rate (aged 16–64)	2016/17	62,500	76.1	74.4	59.8		88.5
	28 Statutory homelessness	2016/17	*1	*1	0.8			
	29 Violent crime (violence offences)	2016/17	1,109	8.1	20.0	42.2		5.7
Health protection	30 Excess winter deaths	Aug 2013 – Jul 2016	171	15.2	17.9	30.3		6.3
	31 New sexually transmitted infections	2017	387	450.8	793.8	3,215.3		266.6
	32 New cases of tuberculosis	2014 – 16	11	2.7	10.9	69.0		0.0

South Oxfordshire District health & wellbeing facts and figures 2019



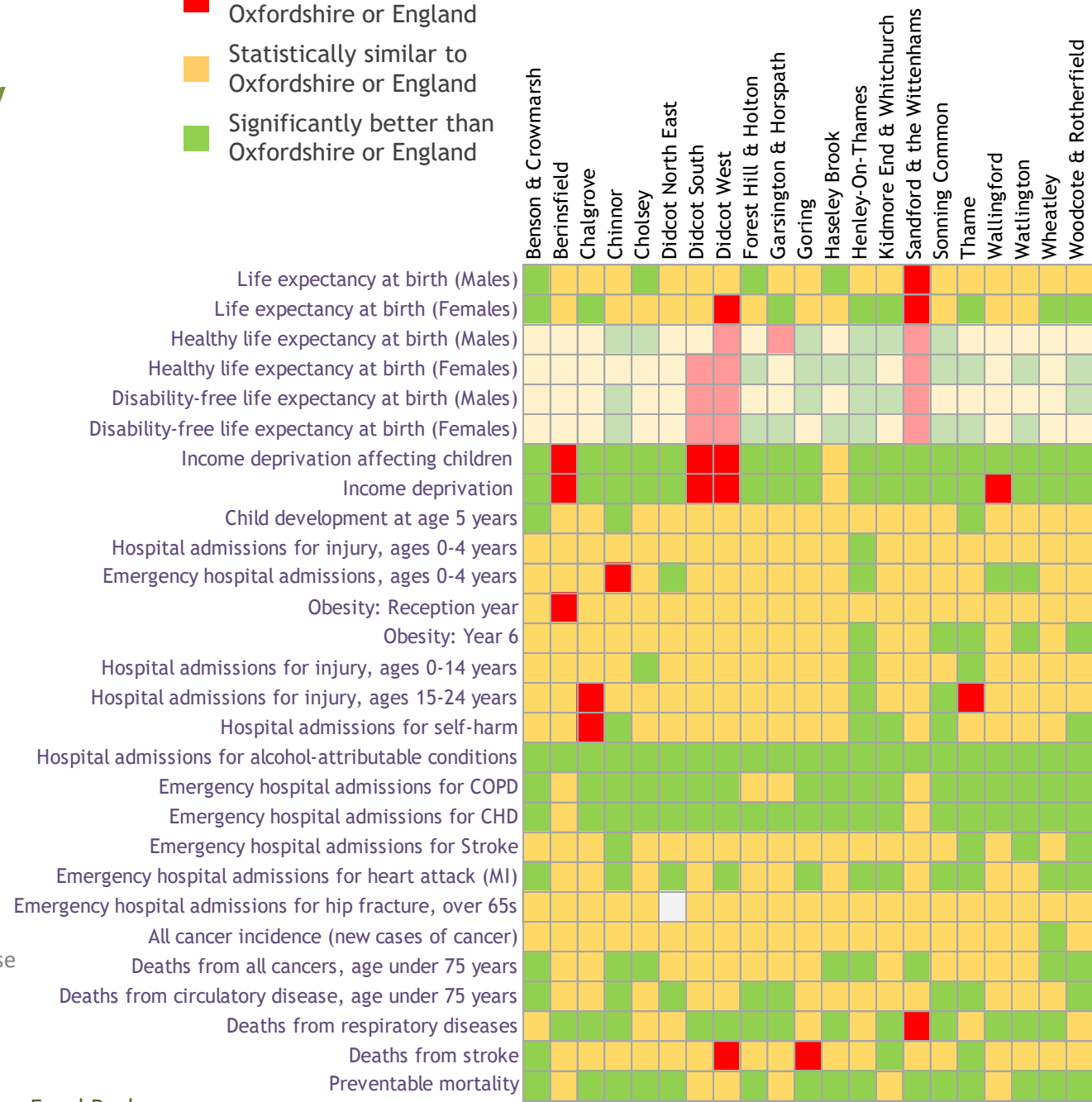
South Oxfordshire inequalities summary

- Significantly worse than Oxfordshire or England
- Statistically similar to Oxfordshire or England
- Significantly better than Oxfordshire or England

In South Oxfordshire, eleven out of twenty-one wards have no indicators worse than average

Wards with the most indicators significantly worse than average are Didcot South, Didcot West, and Sandford & the Wittenhams

Berinsfield has the fewest indicators significantly better than average



Data are shown at ward level for ward boundaries in place in 2016. Health state life expectancy indicators use ward boundaries in place prior to 2016 which may be different from current boundaries and cause discrepancies in the tartan rug. These indicators are shown in a paler colour scheme.

For more information, see the [Inequalities Indicators Excel Pack](#)

Finding out more

The latest JSNA giving health and wellbeing facts and figures for Oxfordshire is available on [Oxfordshire Insight](#)

[Oxfordshire JSNA report](#)

[ANNEX: Inequalities indicators ward level data](#)

[Ward inequalities indicators excel pack including OCCG and District summaries](#)

[Public Health Dashboards](#)

[Health Needs Assessments](#)

[Community Health and Wellbeing Profiles](#)

Public Health England provides a wide range of health indicators and profiles on [Fingertips](#)

ONS population estimates and population projections for county and districts, benefits claimants and the annual population survey are available from www.nomisweb.co.uk

Oxfordshire County Council population forecasts are published on Oxfordshire Insight (select “future population change”)

<http://insight.oxfordshire.gov.uk/cms/population-0>