



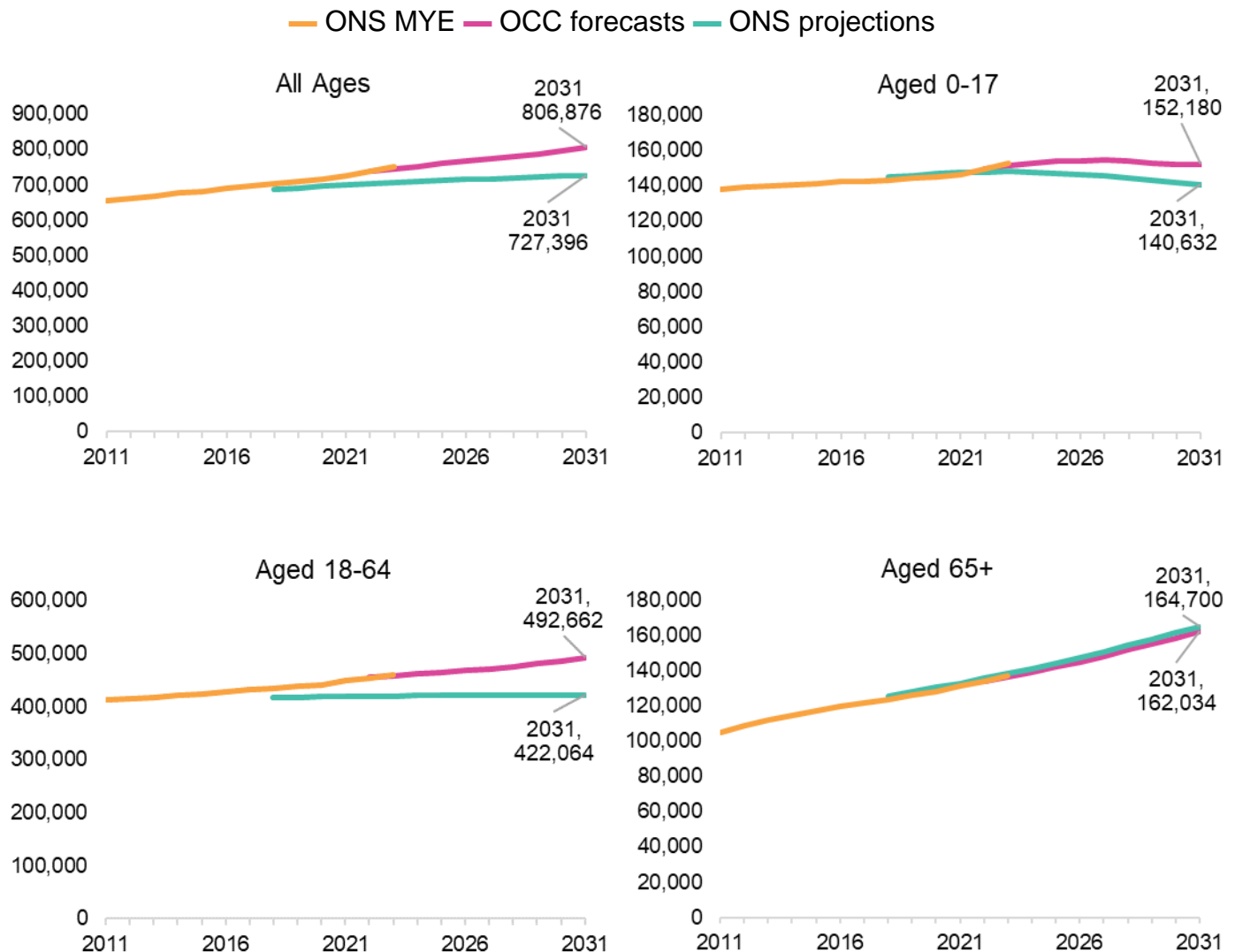
Release of 2022 to 2031 housing-led population forecasts for Oxfordshire, districts and MSOAs

This bitesize presents the Oxfordshire County Council (OCC) housing-led population forecasts released August 2024. It compares the latest OCC forecasts with Office for National Statistics (ONS) Mid-year estimates (MYE) and 2018-based population projections, which does not include any Census 2021 information.

*Important note: housebuilding is a model input, and outputs reflect the expected population if that housebuilding occurs. **The forecasts therefore do not indicate housing need, and should not be interpreted as such.***

The August 2024 update of the Oxfordshire County Council housing-led forecasts predict a total population in Oxfordshire of 806,900 by 2031, a growth of 68,600 (+9%). Over the same period the ONS projections show an increase of +3% but the ONS MYE between 2013 to 2022 saw a +10% increase. The forecast population is lower than last year's update in large part due to new housing being delayed by a year but also updates to birth and migration rate assumptions.

Differences are particularly apparent for the younger and working age groups. For older people aged 65 and over, the predicted growth is similar. Under 18s peak in 2027 and then have a small decline.

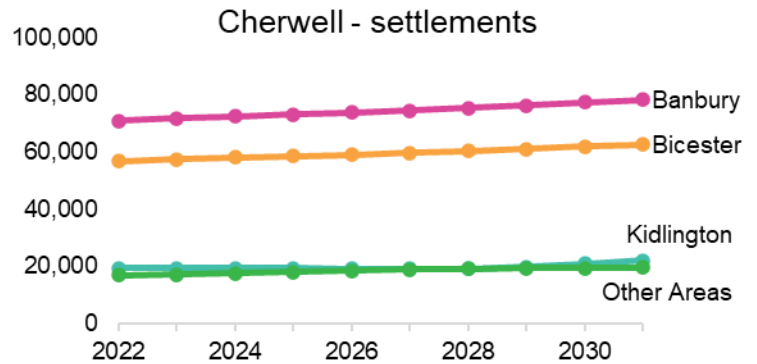
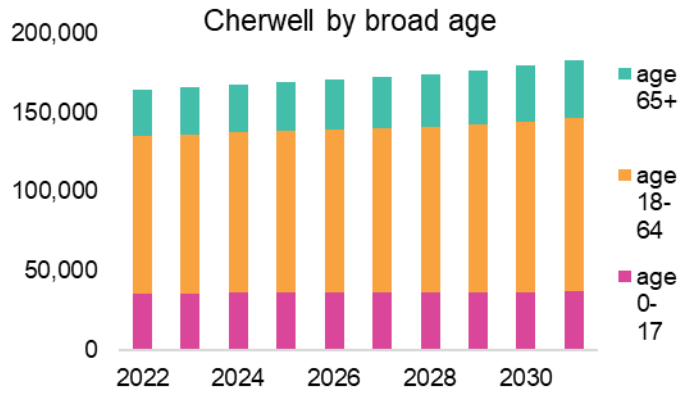


Cherwell

The housing-led forecasts show the population of Cherwell increasing from 164,100 in 2022 to 182,600 by 2031 (+18,600 +11%).

There are expected to be significant increases in the populations of the Banbury, Bicester, and Kidlington areas with major developments around Banbury; Bicester; Upper Heyford; and Kidlington.

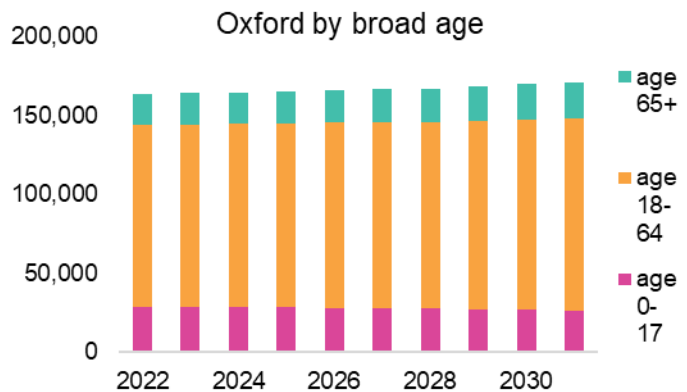
- The population of Banbury and the surrounding area is expected to grow from 70,900 to 78,400 (+10%).
- The population of Bicester and the surrounding area is expected to grow from 56,800 to 62,600 (+10%).
- The population of Kidlington and the surrounding area is expected to grow from 19,300 to 22,200 (+15%).



Oxford

The housing-led forecasts show the population of Oxford increasing from 163,300 in 2022 to 170,800 by 2031 (+7,500, +5%).

Major housing development sites are at Barton Park, Northern Gateway (near Wolvercote), Thornhill Park and Oxpens.



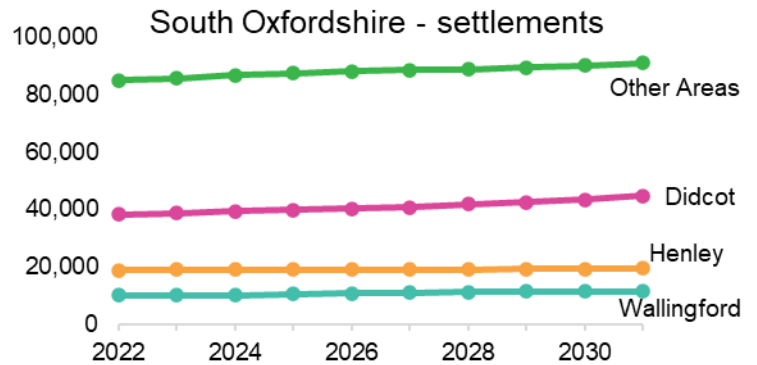
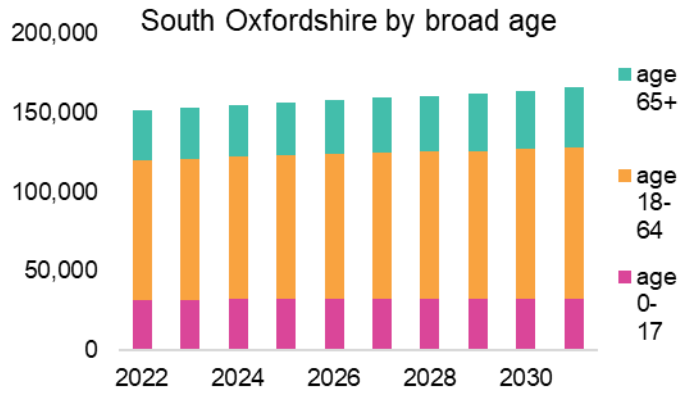
South Oxfordshire

The housing-led forecasts show the population of South Oxfordshire increasing from 151,800 in 2022 to 166,100 by 2031 (+14,300, +9%).

There is expected to be significant increases around Didcot, Culham, Chalgrove, and bordering Oxford Science Park.

- The population of Didcot and the surrounding area is expected to grow from 38,100 to 44,600 (+17%).

Note some parts of Great Western Park/ Valley Park are within Didcot in the Vale area below as they are within Vale of White Horse.

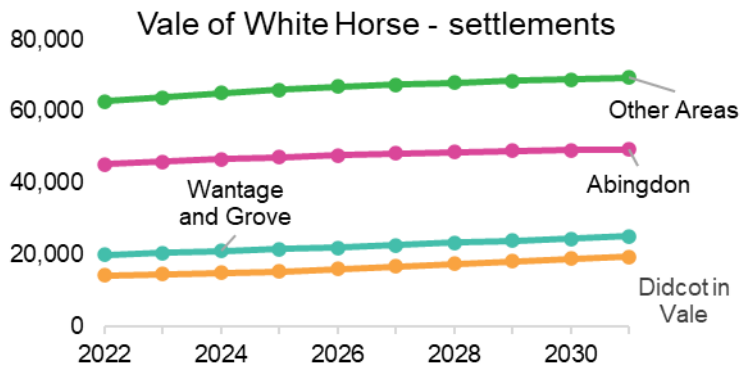
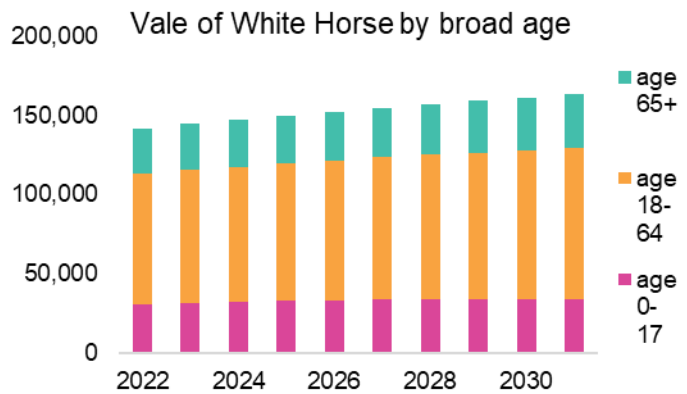


Vale of White Horse

The housing-led forecasts show the population of Vale of White Horse increasing from 142,100 in 2022 to 163,300 by 2031 (+21,200, +15%).

There is expected to be a significant increase in the population at Valley Park between Harwell and Didcot; Grove Airfield; Dalton Barracks; Crab Hill, Wantage; and land north of Abingdon.

- The population of Abingdon is expected to grow from 45,100 to 49,400 (+9%).
- The population of Wantage and Grove is expected to grow from 20,000 to 25,100 (+25%).
- The area west of Didcot in Vale is expected to grow from 14,300 to 19,400 (36%).

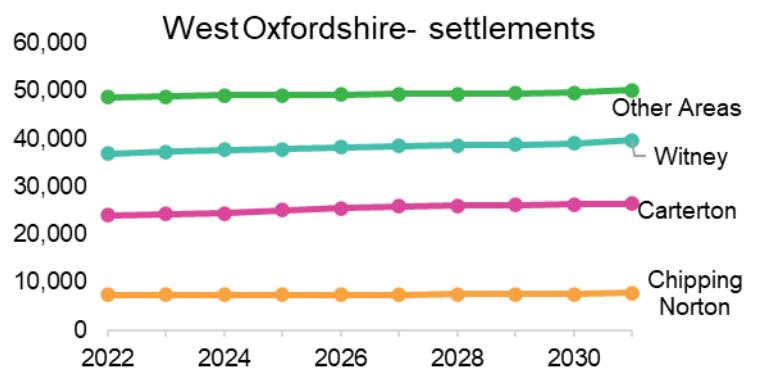
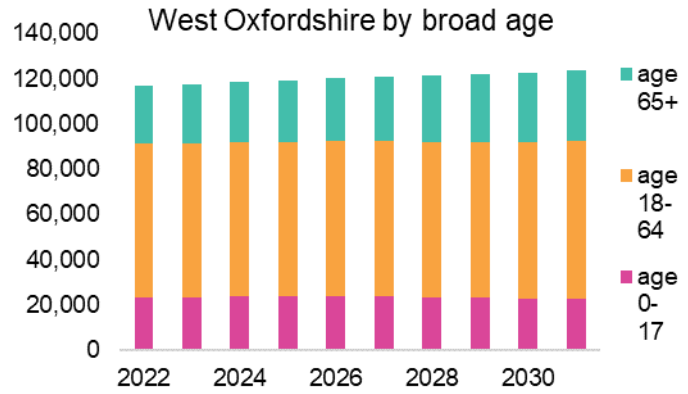


West Oxfordshire

The housing-led forecasts show the population of West Oxfordshire increasing from 116,900 in 2022 to 123,900 by 2031 (+7,000, +6%).

Larger housing developments are planned at Witney, Eynsham and Chipping Norton

- The population of Witney and the surrounding area is expected to grow from 36,900 to 39,700 (+8%).
- Carterton's population is expected to grow from 24,000 to 26,400 (+10%).
- Chipping Norton is expected to grow from 7,300 to 7,700 (+5%).



DATA TABLE: Count of residents 2022 and 2031, by settlement and broad age

	#	Aged 0-17		Aged 18-64		Aged 65+		Total			
		2022	2031	2022	2031	2022	2031	2022	2031	2022 to 2031	
Cherwell	19	35,071	36,758	100,187	109,939	28,897	36,085	164,155	182,783	18,628	11%
Banbury	8	15,459	16,159	43,551	47,583	11,957	14,632	70,967	78,373	7,406	10%
Bicester	6	12,375	13,029	35,856	38,188	8,605	11,409	56,836	62,626	5,790	10%
Kidlington	3	3,589	3,699	11,192	13,265	4,568	5,215	19,349	22,179	2,830	15%
Rest of Cherwell	2	3,648	3,872	9,588	10,905	3,767	4,829	17,003	19,605	2,602	15%
Oxford	19	28,740	26,636	115,042	121,417	19,475	22,710	163,257	170,763	7,506	5%
South Oxfordshire	20	31,405	32,279	88,856	96,008	31,559	37,838	151,820	166,125	14,305	9%
Didcot	5	7,999	8,950	24,453	27,880	5,692	7,765	38,144	44,594	6,450	17%
Henley	3	3,559	3,284	10,450	10,652	4,808	5,349	18,817	19,285	468	2%
Wallingford	1	2,043	2,225	5,617	6,616	2,242	2,475	9,902	11,317	1,415	14%
Rest of South Oxfordshire	11	17,804	17,820	48,336	50,861	18,817	22,250	84,957	90,930	5,973	7%
Vale of White Horse	14	30,788	34,002	82,943	95,298	28,385	34,000	142,116	163,299	21,183	15%
Abingdon	5	9,579	9,424	26,284	29,178	9,283	10,752	45,146	49,354	4,208	9%
Didcot in Vale	1	3,423	4,689	8,372	11,481	2,469	3,227	14,264	19,397	5,133	36%
Wantage and Grove	2	4,281	5,685	11,769	14,698	3,971	4,720	20,021	25,102	5,081	25%
Rest of Vale of White Horse	6	13,505	14,204	36,518	39,941	12,662	15,301	62,685	69,447	6,762	11%
West Oxfordshire	15	23,290	22,505	68,009	69,999	25,629	31,401	116,928	123,905	6,977	6%
Carterton	3	5,013	5,330	15,304	15,907	3,718	5,140	24,035	26,378	2,343	10%
Chipping Norton	1	1,416	1,419	4,067	4,426	1,842	1,837	7,325	7,682	357	5%
Witney	4	7,414	7,324	21,869	22,837	7,651	9,573	36,934	39,734	2,800	8%
Rest of West Oxfordshire	7	9,447	8,432	26,769	26,829	12,418	14,850	48,634	50,112	1,478	3%
Oxfordshire Total	87	149,294	152,180	455,037	492,662	133,945	162,034	738,276	806,876	68,600	9%

#= count of Middle Layer Super Output Areas (MSOAs) included within settlement

For more information

Visit Oxfordshire Insight for [interactive dashboard](#) and [excel dataset of the 2022 to 2031 population forecasts](#)

Office for National Statistics [population estimates](#), and [2018-based population projections](#) are available to download from www.nomisweb.co.uk. And

We welcome your comments, please email jsna@oxfordshire.gov.uk