

# JSNA Bitesize

Health and Wellbeing Facts and Figures, April 2020

Oxfordshire



## Health Needs Assessment, HMP Bullingdon

HMP Bullingdon is a local and resettlement prison near Bicester with just over 1,000 (at the time of the assessment) relatively young male prisoners and with a high turnover rate. Published in July 2019, this NHS [Health Needs Assessment](#) reports on the physical and mental health needs and demands, substance misuse, social care needs as well as screening, immunisation and health promotion in HMP Bullingdon between April 2018 and March 2019.

Compared with similar prisons, HMP Bullingdon was found to have a higher prevalence of asthma, depression, epilepsy and obesity, and a lower prevalence of diabetes, obesity and hypertension.

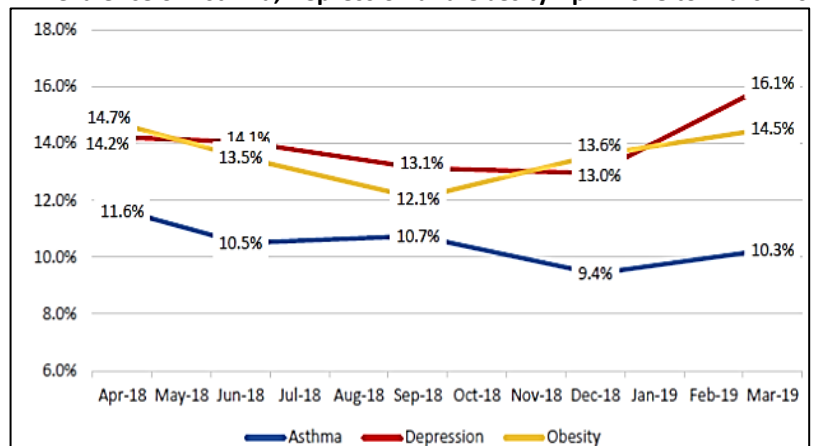
Between April 2018 and March 2019, the prevalence of depression appears to have increased.

Based on the stakeholder survey and the MH service users focus group, it was felt that the demand for primary and secondary mental health services exceeded the capacity to provide treatment.

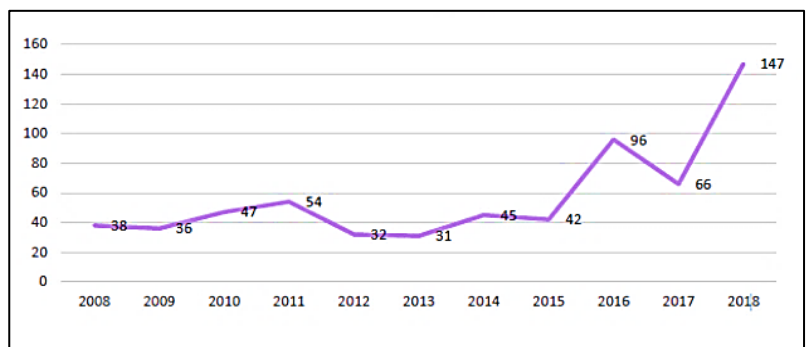
As of May 2019, 16% of the prison population of HMP Bullingdon were in clinical substance misuse treatment and 18% were in psychosocial substance misuse treatment

A higher proportion of prisoners felt it was easy to get drugs or alcohol in the prison (50% and 33% respectively) compared with the average across all prisons (47% and 23% respectively). The Drug and Alcohol Recovery Team reported that the prevalence of illicit drug use was high.

Prevalence of Asthma, Depression and Obesity April 2018 to March 2019



Incidents where drugs were found (year to March 2008 to 2018)



Original source: Table 9, HM prison and Probation Service Annual Digest 2018

We welcome your comments, please email [jsna@oxfordshire.gov.uk](mailto:jsna@oxfordshire.gov.uk)